

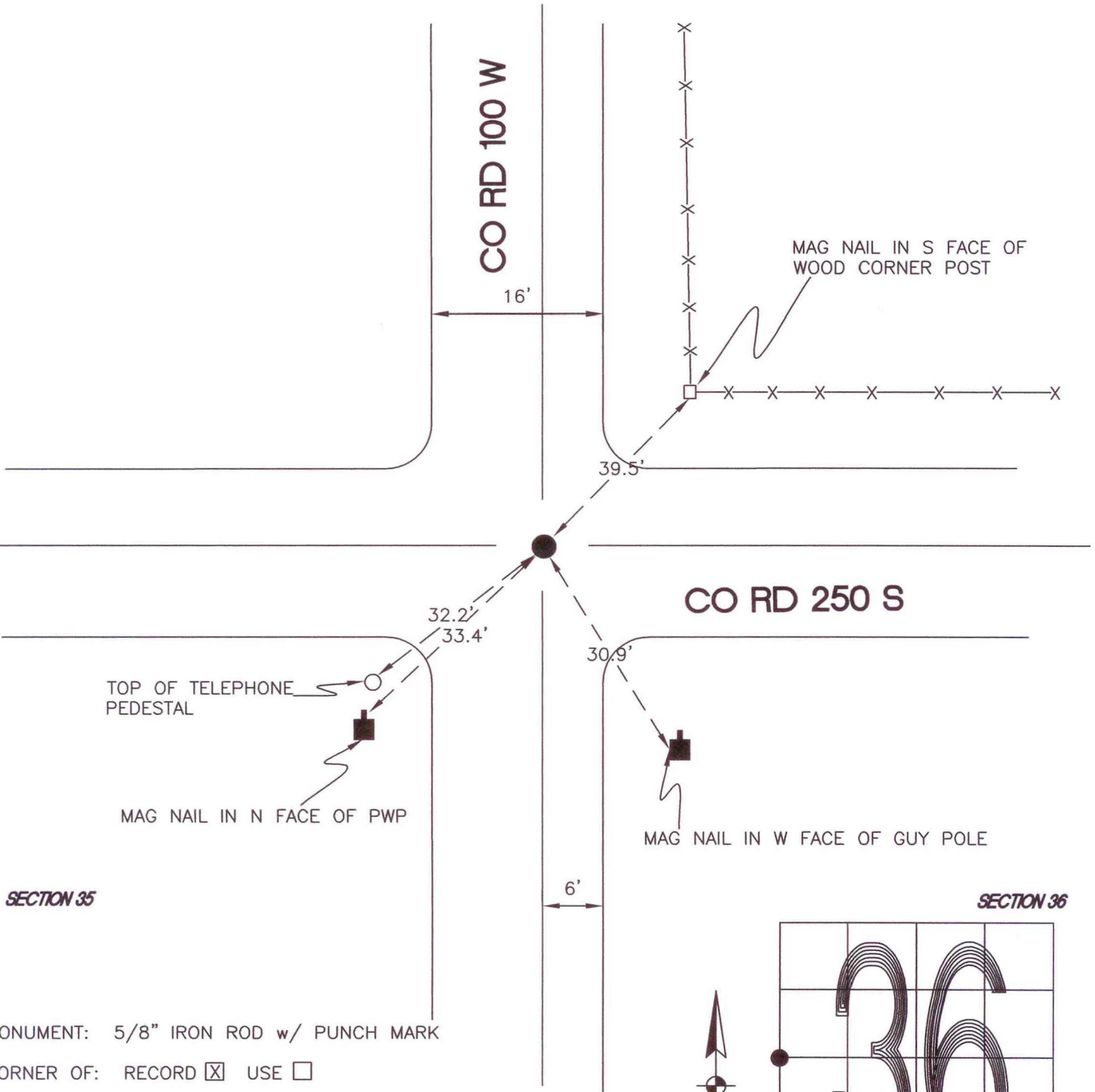
# JACKSON TOWNSHIP

T 33 N, R 3 W

## X21

SECTION 35

SECTION 36



MONUMENT: 5/8" IRON ROD w/ PUNCH MARK

CORNER OF: RECORD  USE

PARTY: JL/PM

DATE: 3-29-2007

COMMENTS:

CORNER LOCATION IN THE SECTION

## X21