

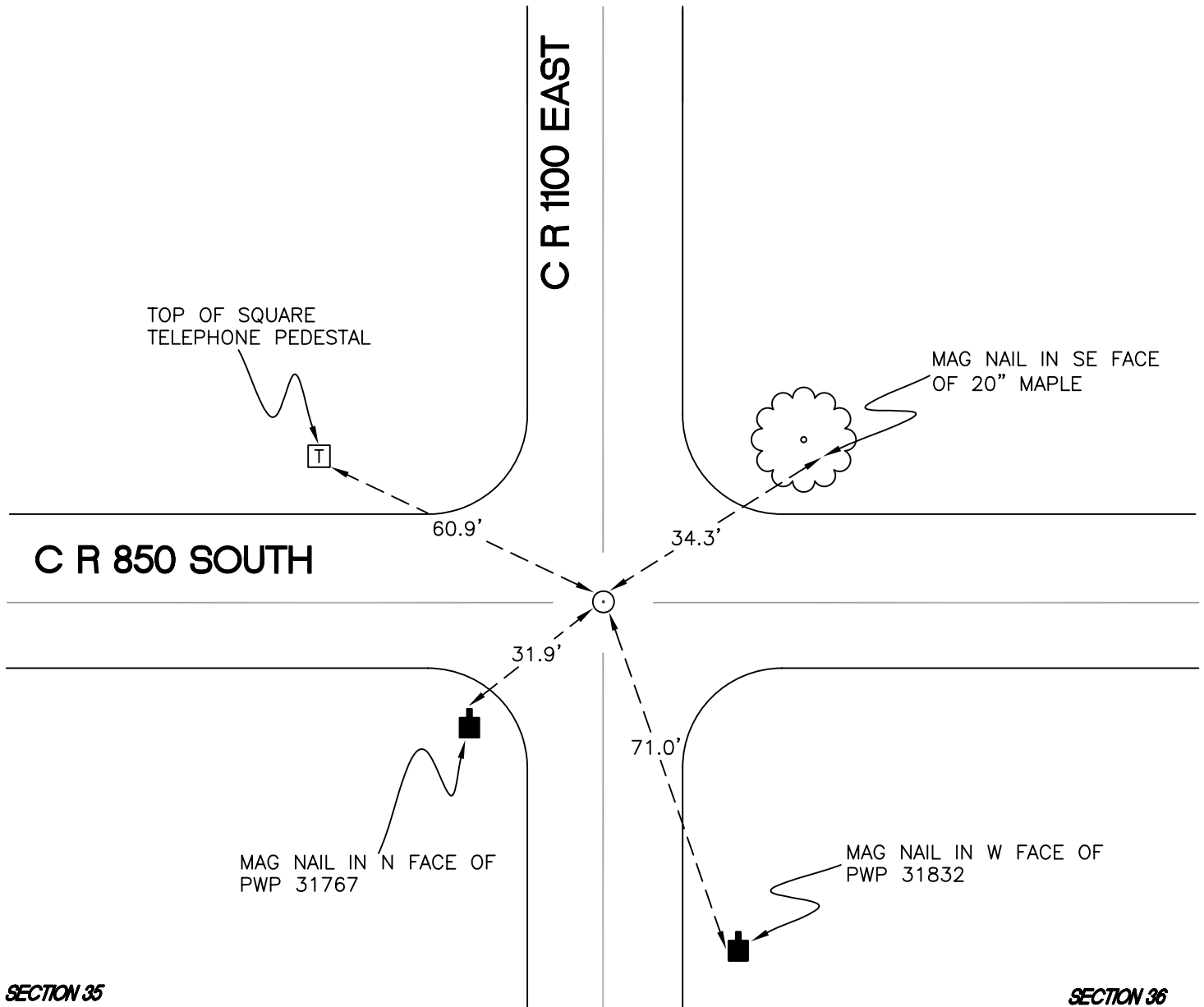
NORTH BEND TOWNSHIP

T 32 N, R 1 W

X21

SECTION 35

SECTION 36



SECTION 35

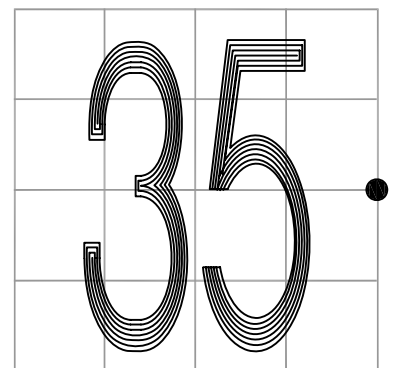
SECTION 36

MONUMENT: RAIL BOLT

PARTY: JL/AO

DATE: 6/13/12

COMMENTS: 2' S OF \odot OF 850 S.
FOUND IN 1988 BY DWC/SJF



CORNER LOCATION IN THE SECTION

X21