

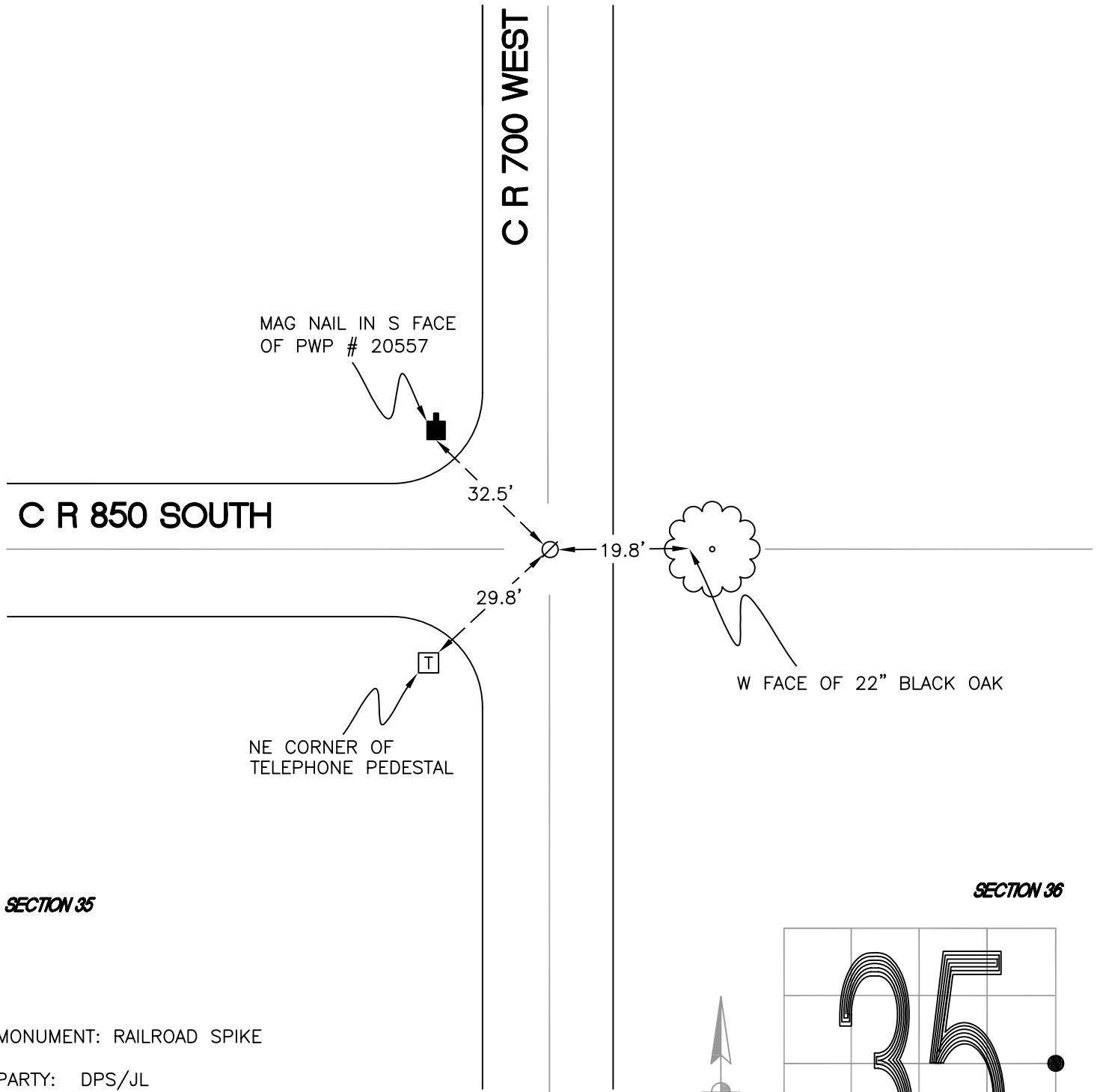
RAILROAD TOWNSHIP

T 32 N, R 4 W

X21

SECTION 35

SECTION 36



SECTION 35

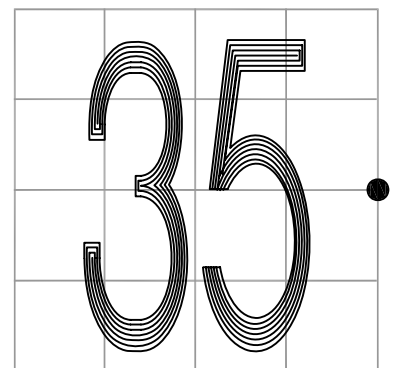
SECTION 36

MONUMENT: RAILROAD SPIKE

PARTY: DPS/JL

DATE: 5/7/2015

COMMENTS: FOUND BY DPS/MSL IN 2003.
MONUMENT IS 0.3' BELOW GRADE.



CORNER LOCATION IN THE SECTION

X21