

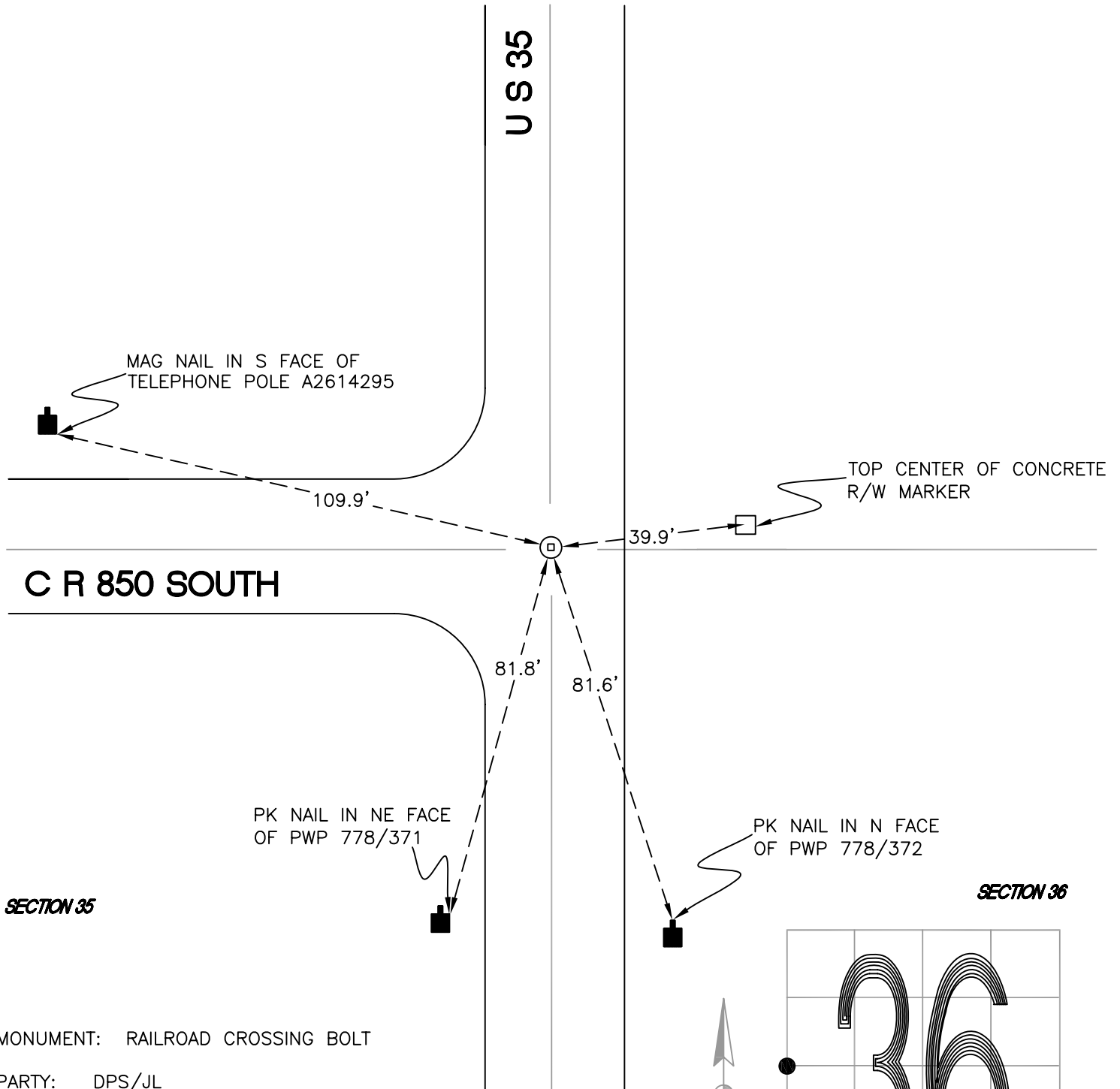
CALIFORNIA TOWNSHIP

T 32 N, R 2 W

X21

SECTION 35

SECTION 35

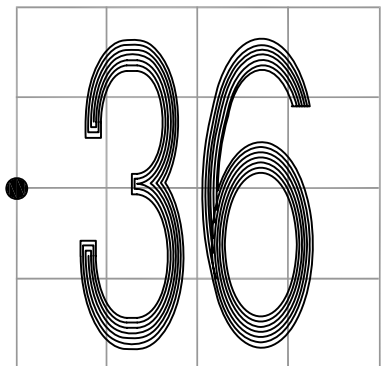


MONUMENT: RAILROAD CROSSING BOLT

PARTY: DPS/JL

DATE: 7/28/14

COMMENTS: MONUMENT SET BY TERRITORIAL ENGINEERING IN 2014. RR SPIKE FOUND IN 2007 BY TERRITORIAL ENGINEERING WAS NO LONGER THERE.



CORNER LOCATION IN THE SECTION

X21