

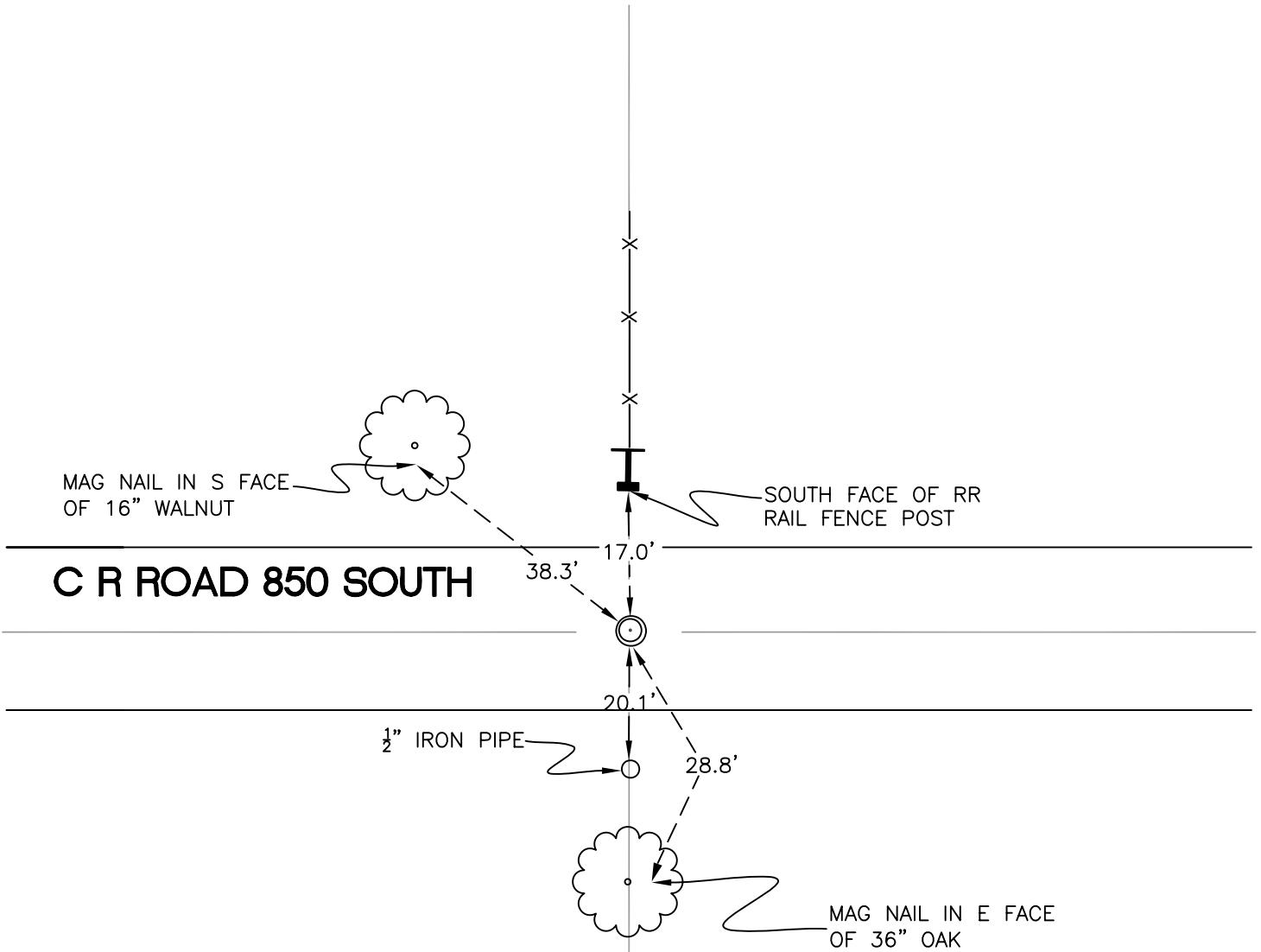
NORTH BEND TOWNSHIP

T 32 N, R 1 W

X23

SECTION 36

SECTION 36



SECTION 36

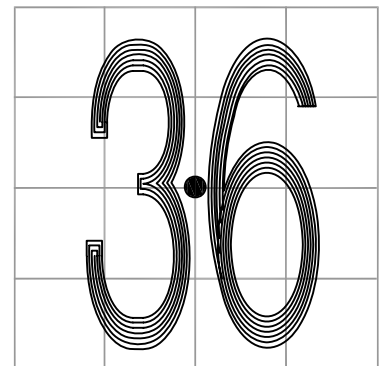
SECTION 36

MONUMENT: RAIL BOLT INSIDE IRON PIPE

PARTY: JL/AO

DATE: 6/13/12

COMMENTS: 2" BELOW GRADE.
FOUND IN 1988 BY SJF/DWC



CORNER LOCATION IN THE SECTION

X23