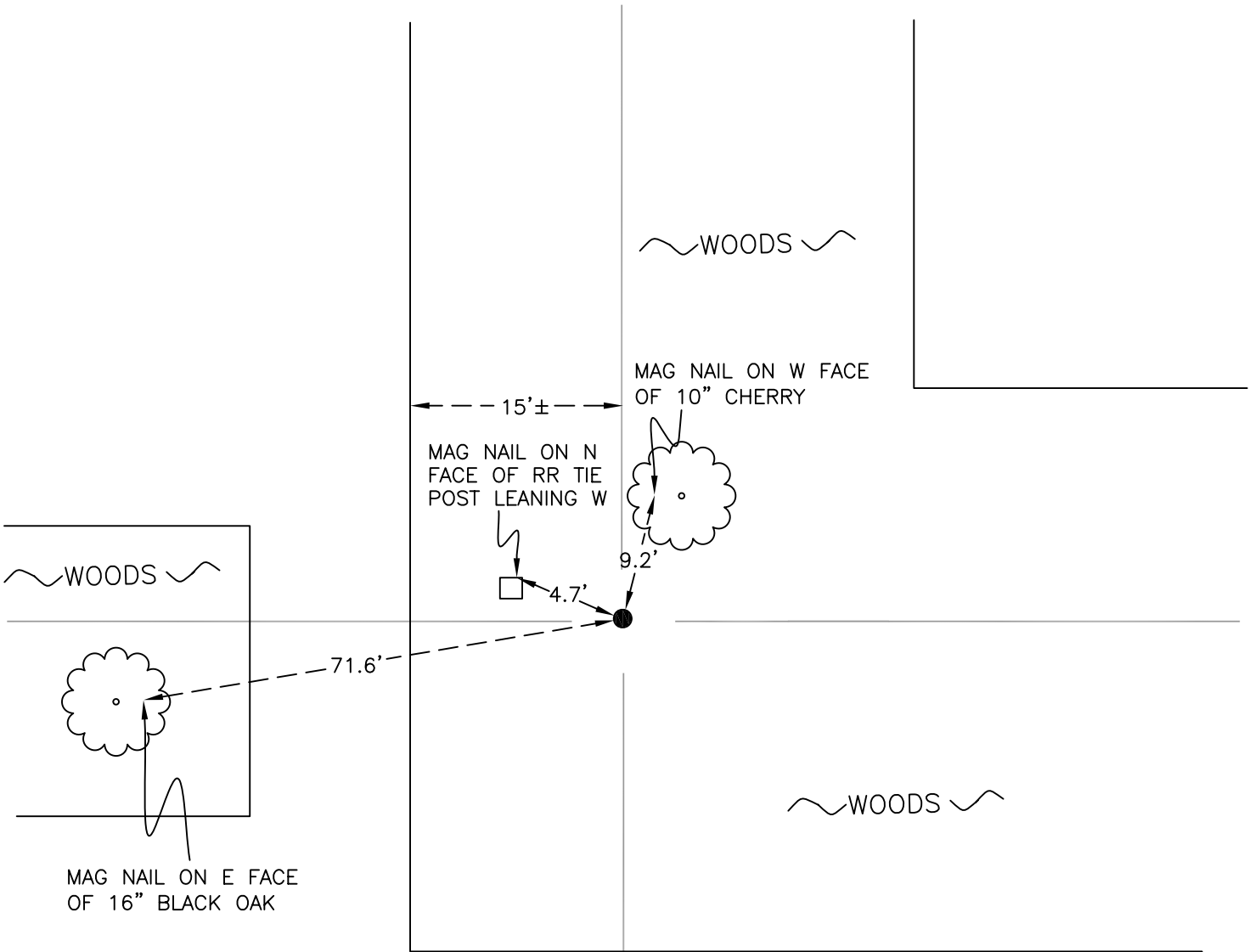


CALIFORNIA TOWNSHIP  
T 32 N, R 2 W  
X23

SECTION 36

SECTION 36



SECTION 36

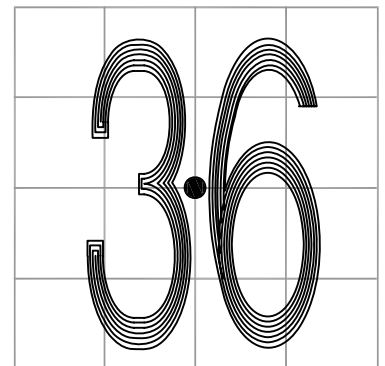
SECTION 36

MONUMENT: 5/8" IRON ROD w/ RED CAP

PARTY: DPS/JL

DATE: 7/15/14

COMMENTS: FOUND AND REFERENCED BY INDOT IN 2012.



CORNER LOCATION IN THE SECTION

X23