

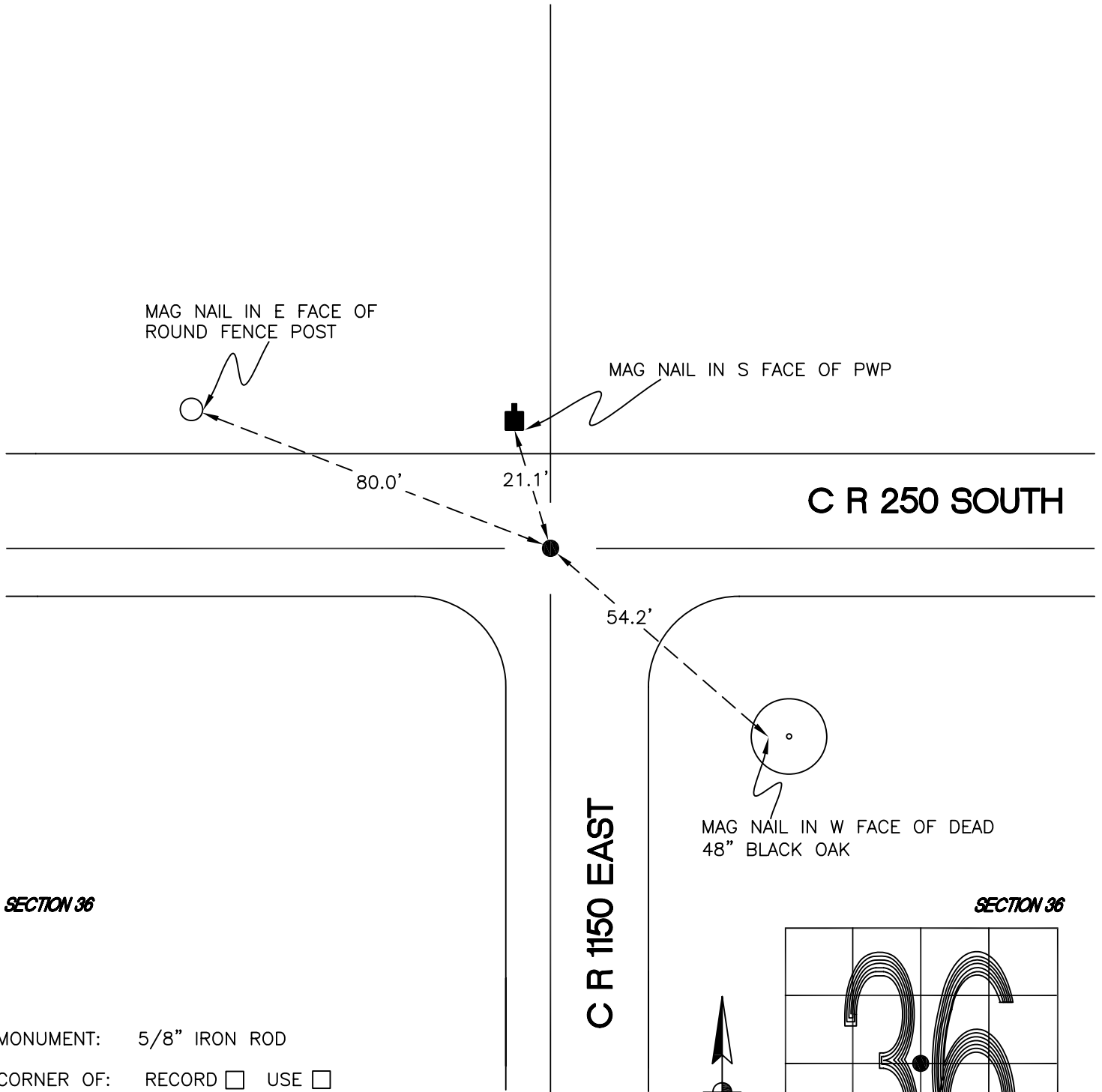
WASHINGTON TOWNSHIP

T 33 N, R 1 W

X23

SECTION 36

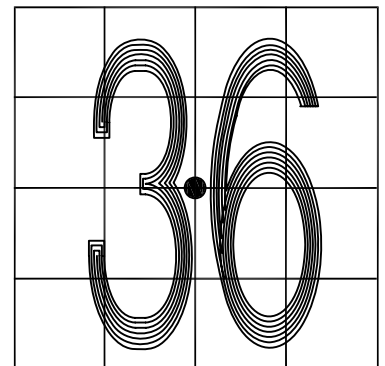
SECTION 36



SECTION 36

SECTION 36

MONUMENT: 5/8" IRON ROD
CORNER OF: RECORD USE
PARTY: JL/PM
DATE: 7-9-2008
COMMENTS: 3" BELOW GRADE; 4' W OF ϕ OF 1150E;
3.5' S OF ϕ OF 250S



CORNER LOCATION IN THE SECTION

X23