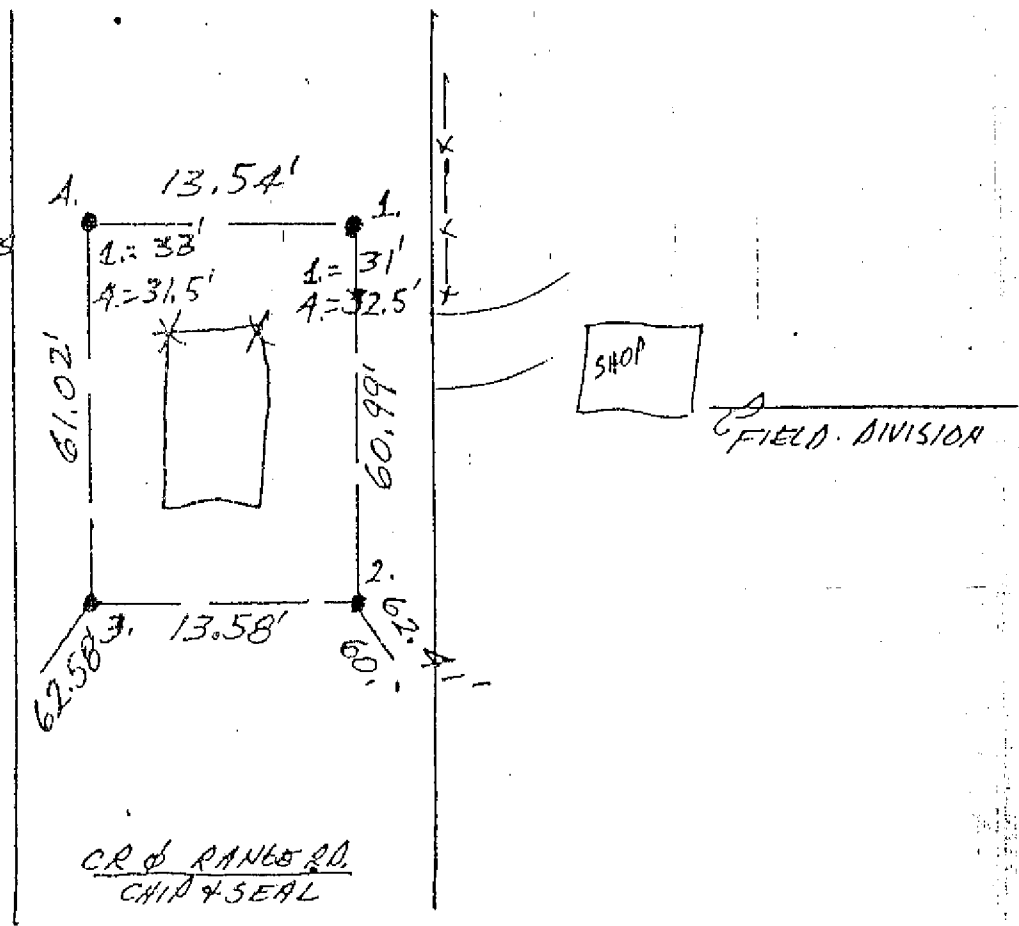


N.
NO SCALE

1. TUES 10 JULY '90 OLA RLS 0537, P. MAYER & ; FOUND CARPENTER NAIL \approx 2' EAST OF R/W SPLIT \approx FIELD DIVISION - NO OTHER MONUMENT SOUNDING. SET REFS. WILL DIG. FOUND NAIL GIVEN NO WEIGHT.
2. FRI 13 JULY '90 DUG 7' X 8.5' X 2.5' DEEP HOLE; FOUND NO POST, NO PIT, NO STONE.
3. TUES 17 JULY '90 SPOTED HOLE.

SET RR. SPIKES
 1/4 CENTER PUNCHES
 @ ALL REFS.



EAST 1/4 COR. SEC. 36

NO MONUMENT

X-25