

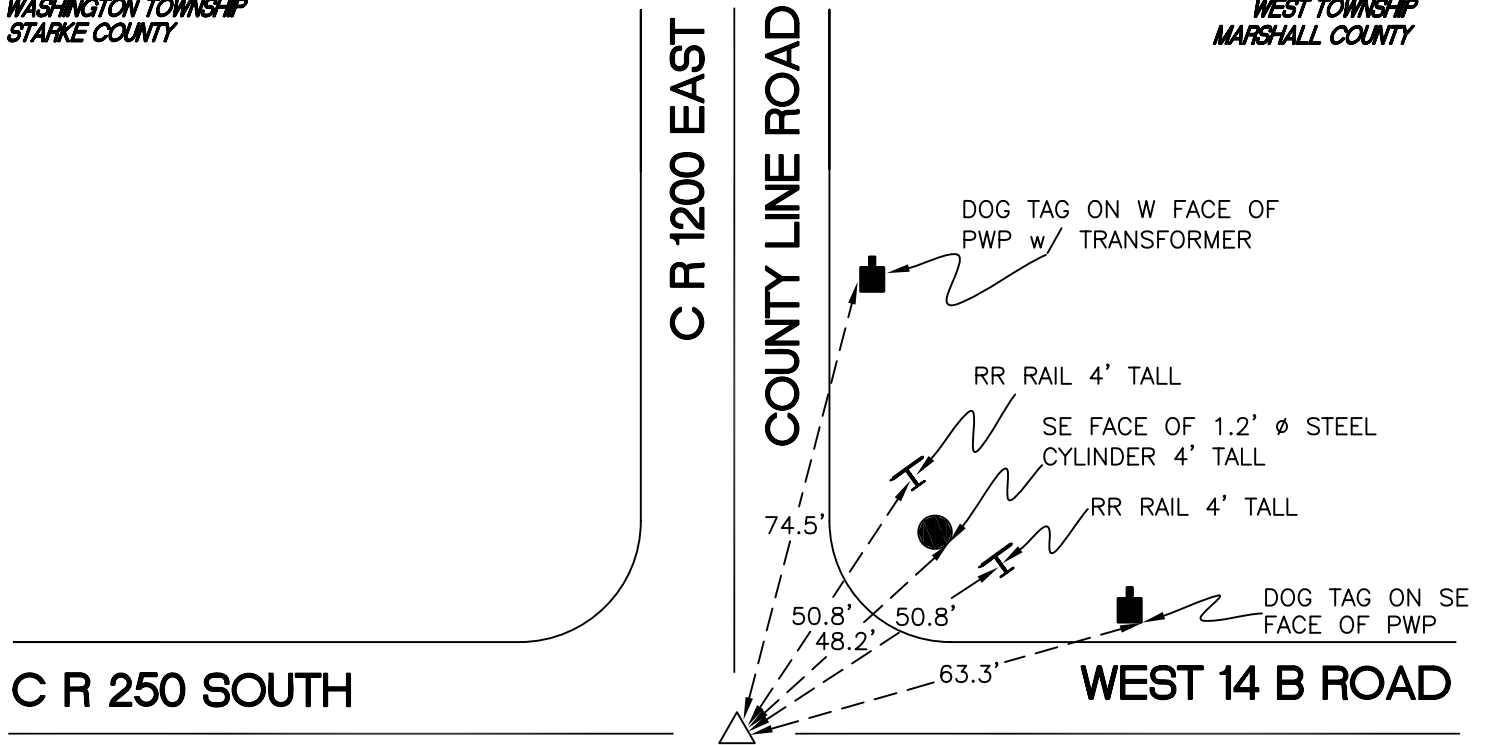
WASHINGTON TOWNSHIP

T 33 N, R 1 W

X25

SECTION 36
WASHINGTON TOWNSHIP
STARKE COUNTY

SECTION 31
WEST TOWNSHIP
MARSHALL COUNTY



SECTION 36
WASHINGTON TOWNSHIP
STARKE COUNTY

SECTION 31
WEST TOWNSHIP
MARSHALL COUNTY

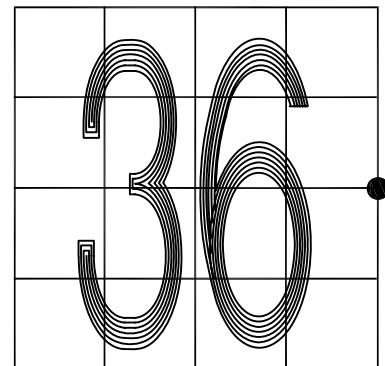
MONUMENT: ALUMINUM MONUMENT

CORNER OF: RECORD USE

PARTY: JL

DATE: 8-18-2008

COMMENTS: PRIOR TO 1987 MARSHALL AND STARKE COUNTIES USED THE SAME MONUMENT (BRASS PIPE) WHICH WAS ABOUT 2.0' NE OF THE CURRENT MONUMENT. IN 1987 MARSHALL COUNTY ESTABLISHED A MONUMENT OVER A FOUND STONE IN THE CURRENT LOCATION. ALL STARKE COUNTY SURVEYS PRIOR TO 1987 USED THE OLD MONUMENT.



CORNER LOCATION IN THE SECTION

X25