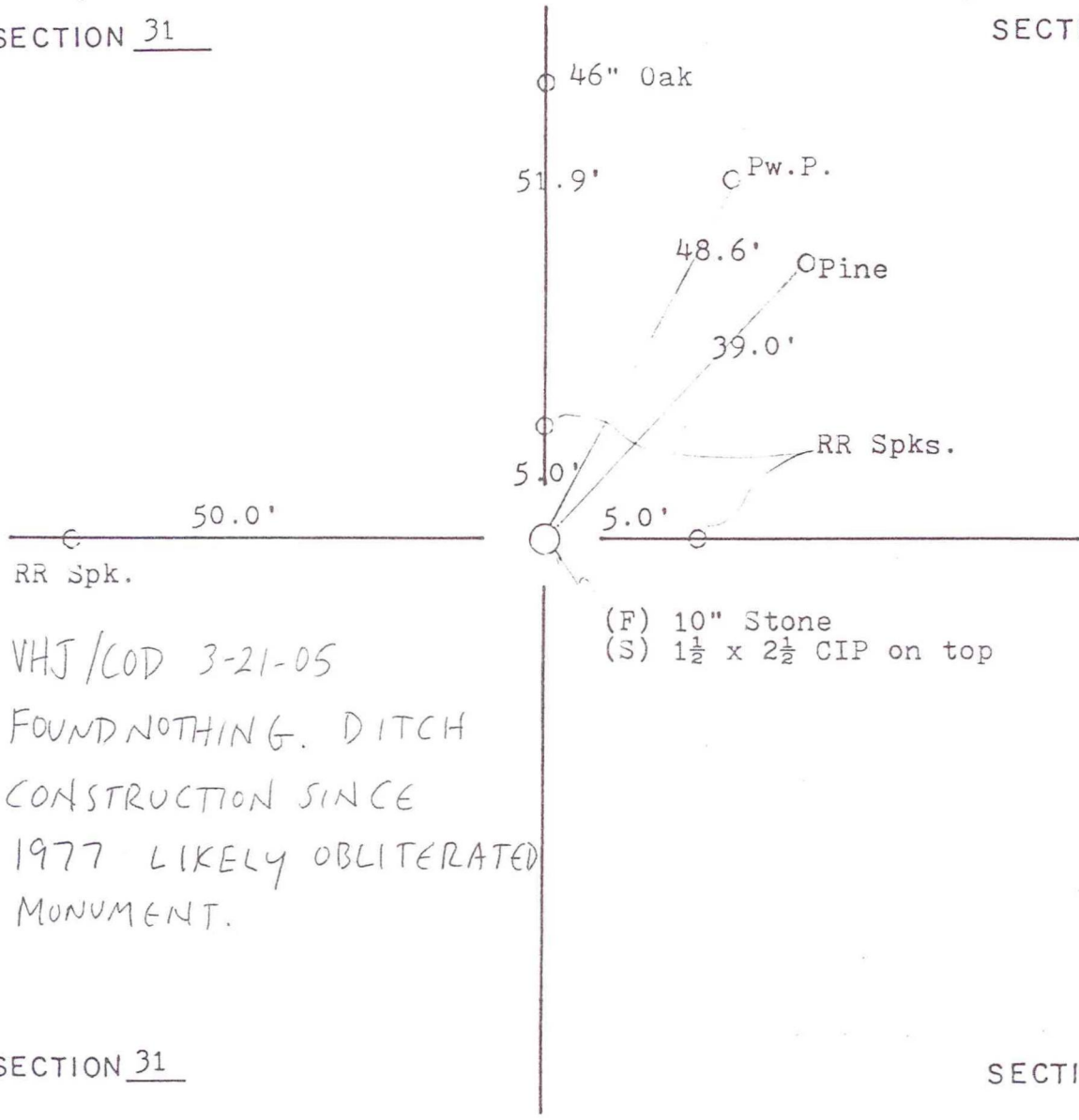


# OREGON TOWNSHIP

## T 34 N, R 1 W

SECTION 31

SECTION 31



VHJ/COD 3-21-05  
 FOUND NOTHING. DITCH  
 CONSTRUCTION SINCE  
 1977 LIKELY OBLITERATED  
 MONUMENT.

(F) 10" Stone  
 (S) 1½ x 2½ CIP on top

SECTION 31

SECTION 31

DATE	BY	DATE	BY
c1977	CETA		

CORNER OF: RECORD  USE   
 SOURCE OF INFORMATION:  
 File