

NORTH BEND TOWNSHIP

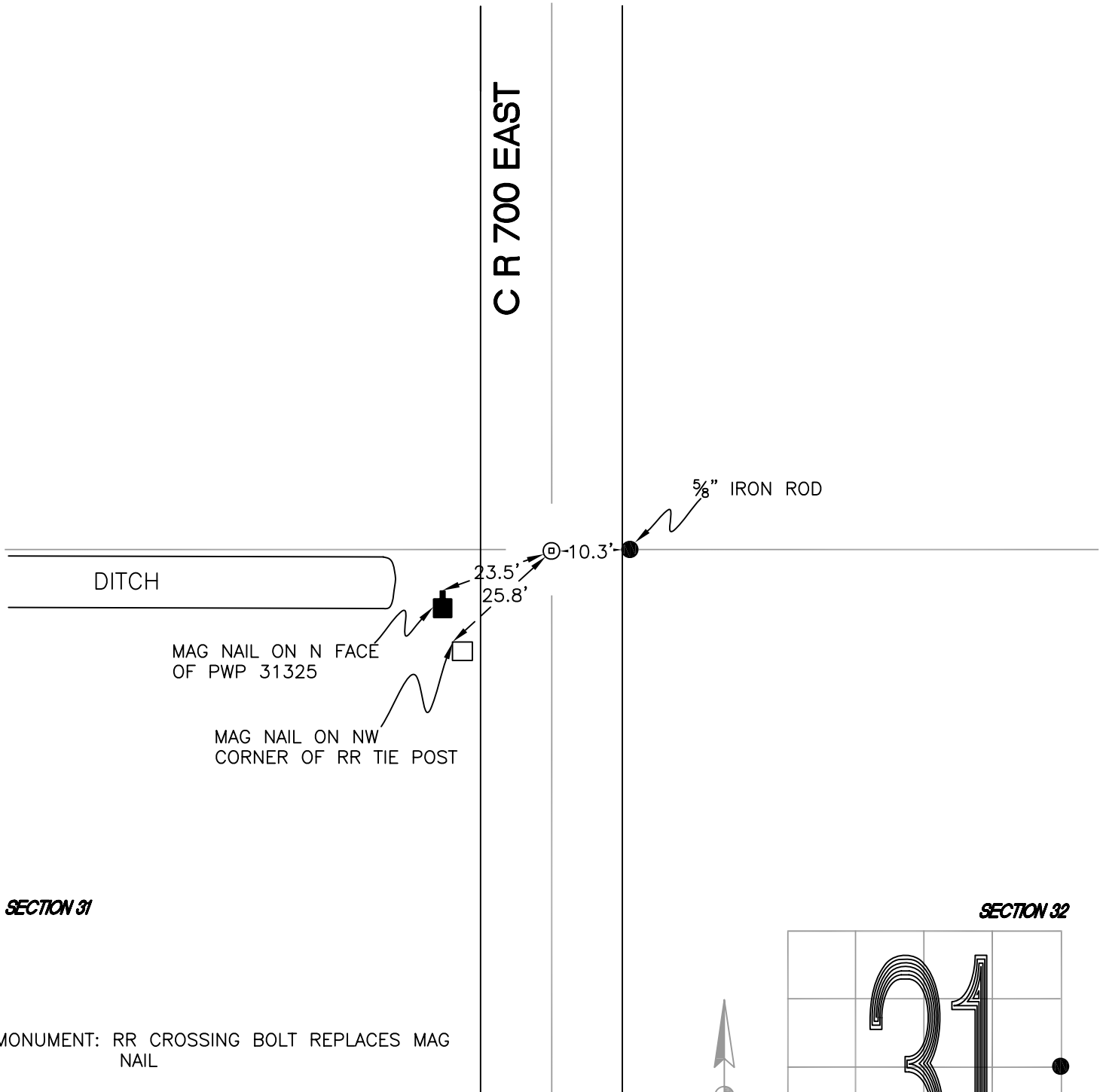
T 32 N, R 1 W

X5

SECTION 31

SECTION 32

CR 700 EAST



SECTION 31

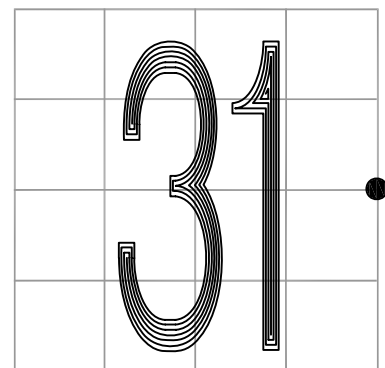
SECTION 32

MONUMENT: RR CROSSING BOLT REPLACES MAG NAIL

PARTY: JL

DATE: 9/14/12

COMMENTS: ORIGINAL REFERENCES FROM 1977 ARE GONE; NO STONE FOUND. MAG NAIL SET BY PLYMOUTH LAND SURVEYING IN 2007.



CORNER LOCATION IN THE SECTION

X5