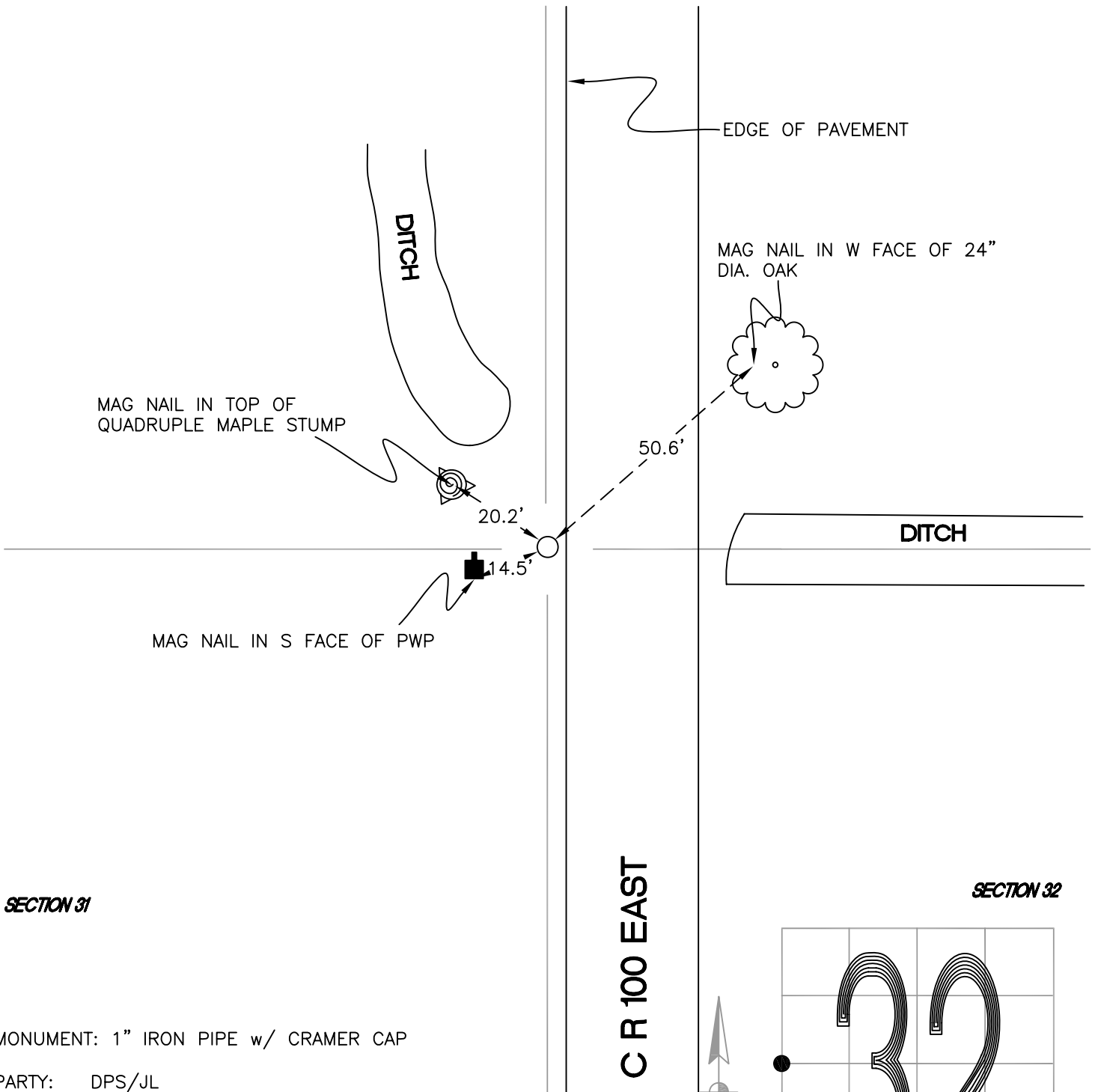


CALIFORNIA TOWNSHIP

T 32 N, R 2 W
X5

SECTION 31

SECTION 32



SECTION 31

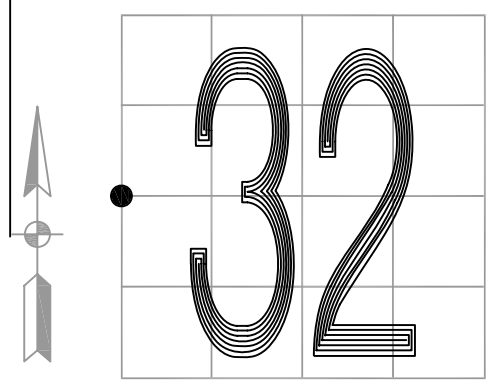
SECTION 32

MONUMENT: 1" IRON PIPE w/ CRAMER CAP

PARTY: DPS/JL

DATE: 7/15/14

COMMENTS: MONUMENT IS 3" BELOW GRADE AND 7.5' W OF C OF 100 E. SET AND REFERENCED BY WIGHTMAN CRAMER IN 1996.



X5