

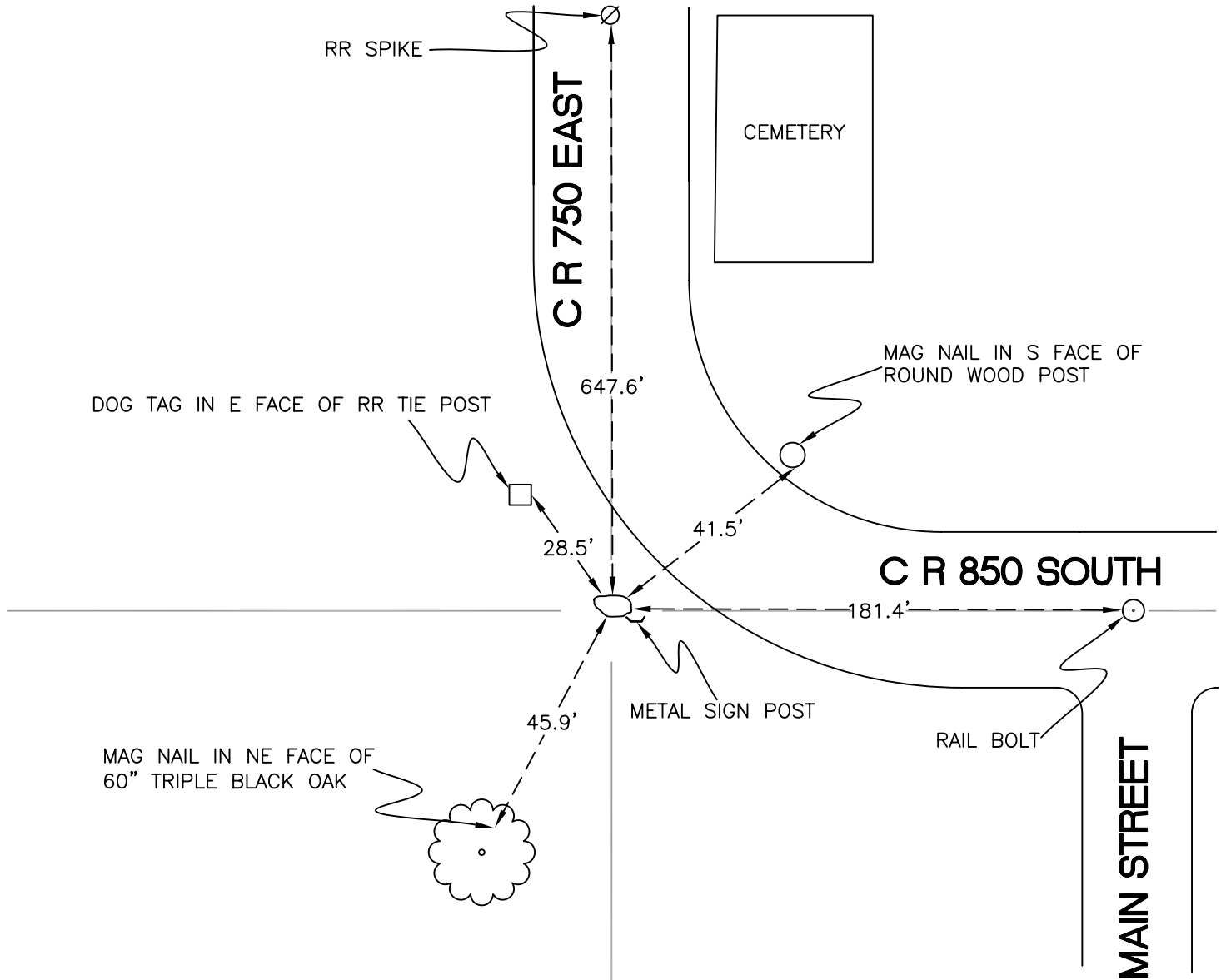
NORTH BEND TOWNSHIP

T 32 N, R 1 W

X7

SECTION 32

SECTION 32



SECTION 32

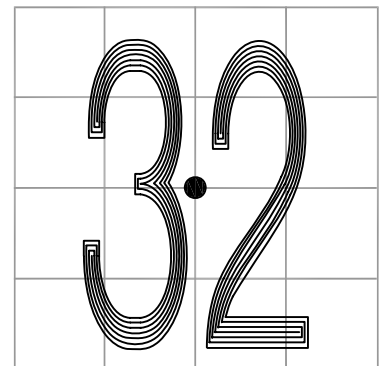
SECTION 32

MONUMENT: STONE w/ "+" MARK

PARTY: JL/AO

DATE: 7/9/12

COMMENTS: 18" BELOW GRADE. 2" FLAT METAL BAR IS ON THE S SIDE OF STONE. METAL SIGN POST IS 1.7' TO THE SE. STONE SET IN 1887. FOUND BY RTB IN 1975 AND CETA IN 1977.



CORNER LOCATION IN THE SECTION

X7