

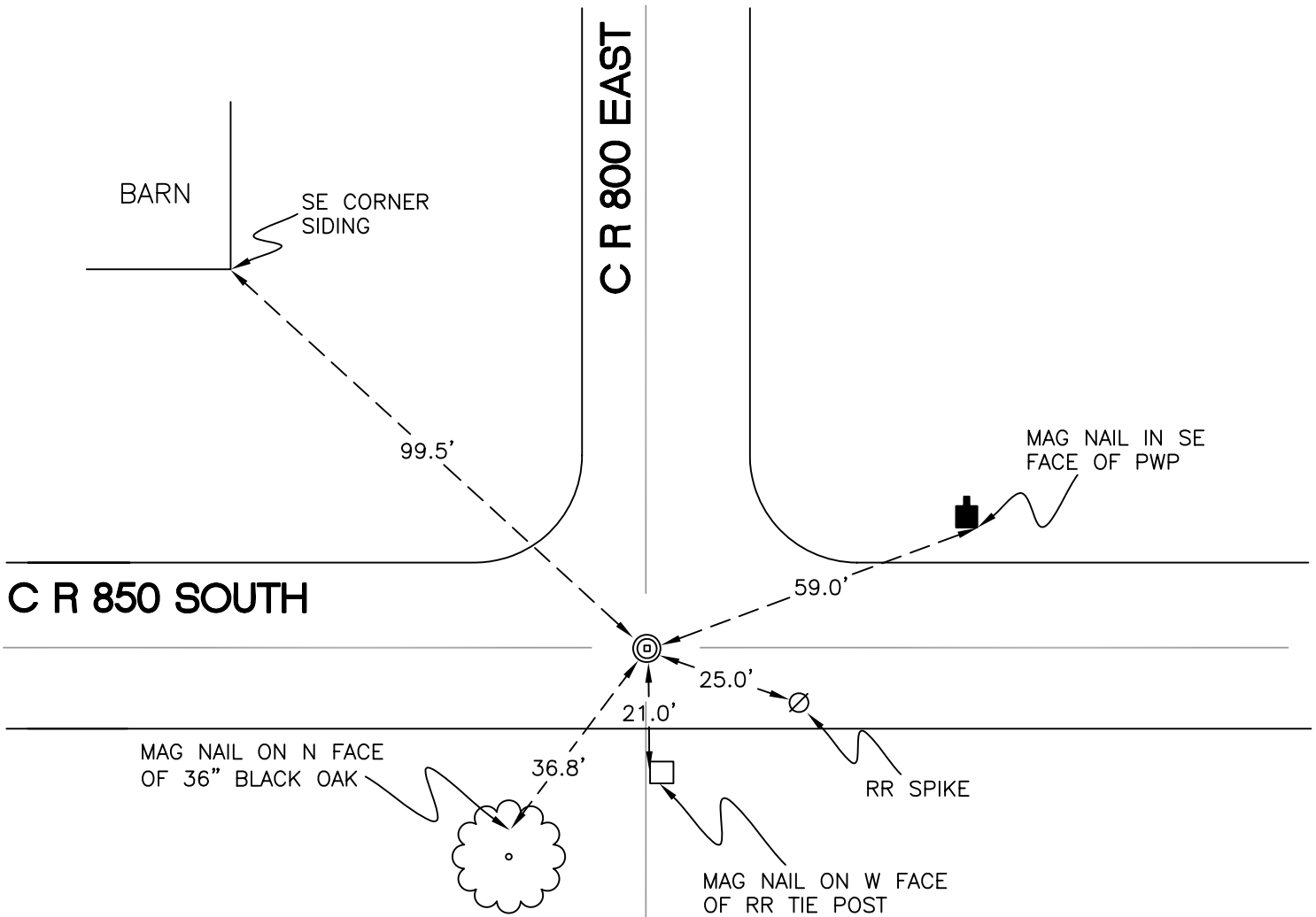
# NORTH BEND TOWNSHIP

T 32 N, R 1 W

## X9

SECTION 32

SECTION 33



SECTION 32

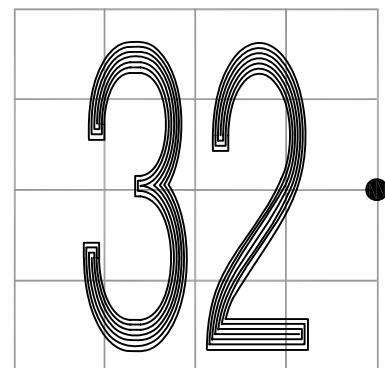
SECTION 33

MONUMENT: RR CROSSING BOLT INSIDE 2" IRON PIPE

PARTY: JL/AO

DATE: 6/18/12

COMMENTS: 4' W OF 800 E  
CROSSING BOLT WAS SET INSIDE THE IRON  
PIPE. STONE FOUND IN 1981 AND THE  
IRON PIPE WAS SET ON TOP. STONE  
SET IN 1887.



CORNER LOCATION IN THE SECTION

## X9