

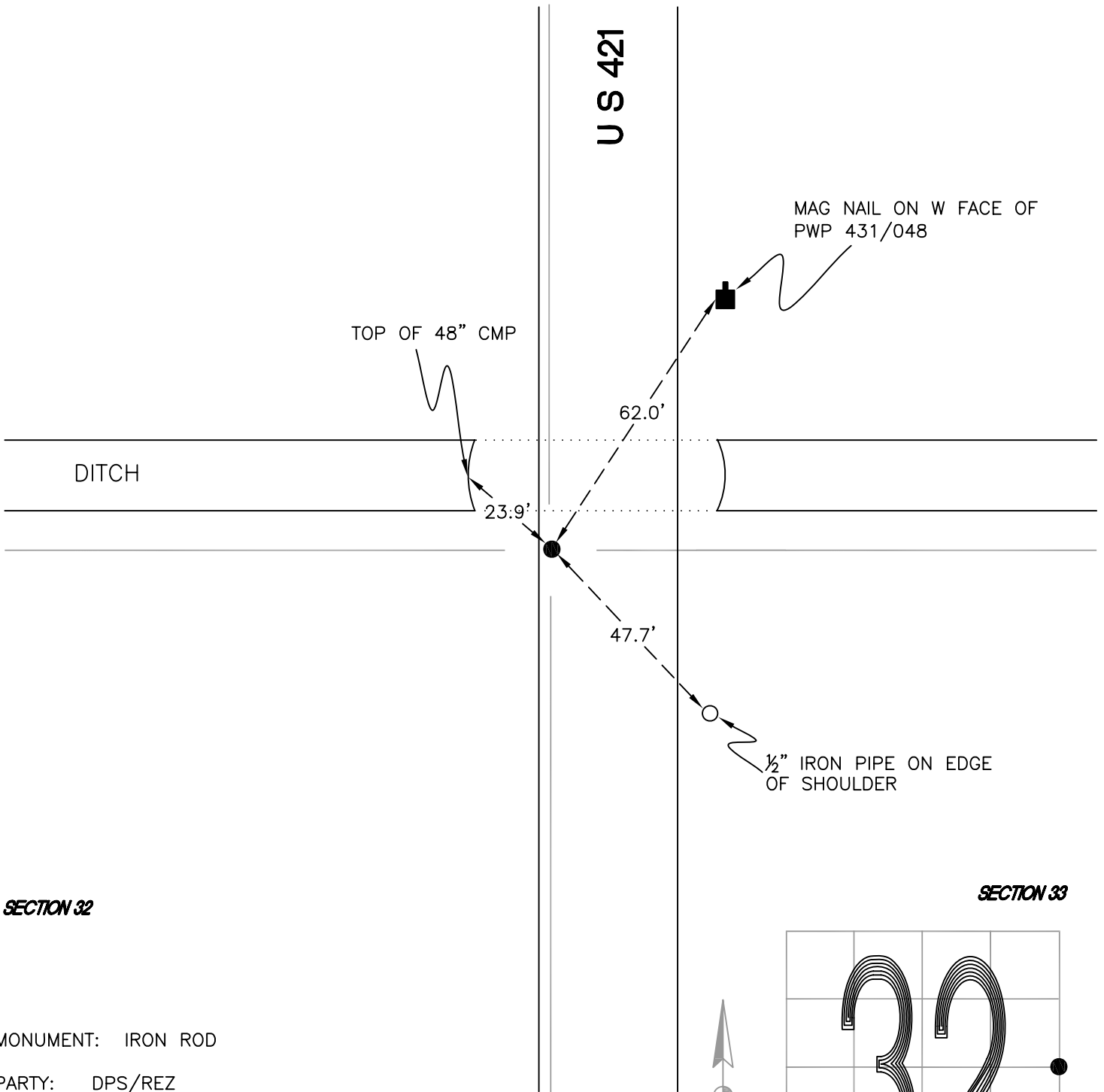
RAILROAD TOWNSHIP

T 32 N, R 4 W

X9

SECTION 32

SECTION 33



SECTION 32

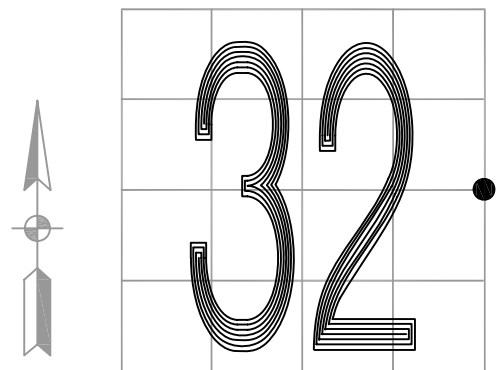
SECTION 33

MONUMENT: IRON ROD

PARTY: DPS/REZ

DATE: 2015

COMMENTS: MONUMENT IS 1' E OF EDGE OF PAVEMENT AND 12' W OF C OF US 421. FOUND BY VHJ/JL IN 1986. SET BY INDOT IN 1986.



CORNER LOCATION IN THE SECTION

X9