

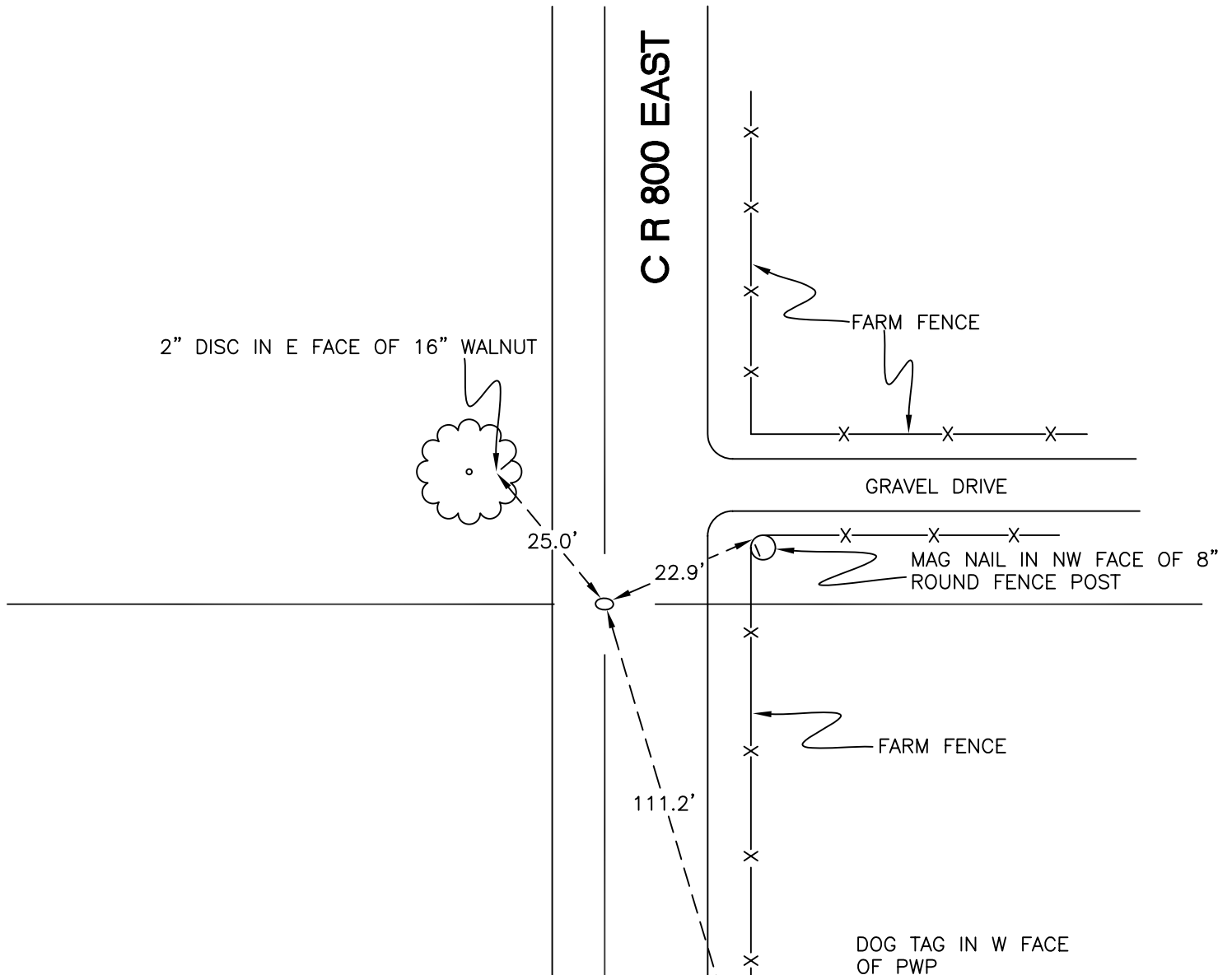
# WASHINGTON TOWNSHIP

T 33 N, R 1 W

## X9

SECTION 32

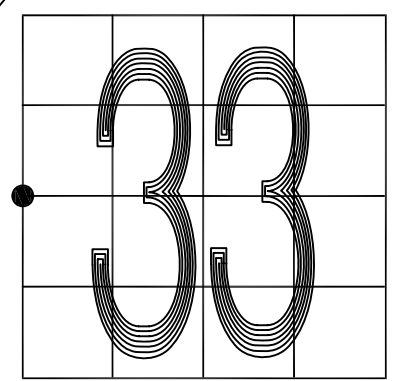
SECTION 33



SECTION 32

SECTION 33

MONUMENT: OVAL DISK IN IRON BAR  
CORNER OF: RECORD  USE   
PARTY: JL/PM  
DATE: 7-9-2008  
COMMENTS: 6" BELOW GRADE; 3' W OF  $\varnothing$  OF 800E; 5' E OF W EDGE OF PAVEMENT



CORNER LOCATION IN THE SECTION

## X9