

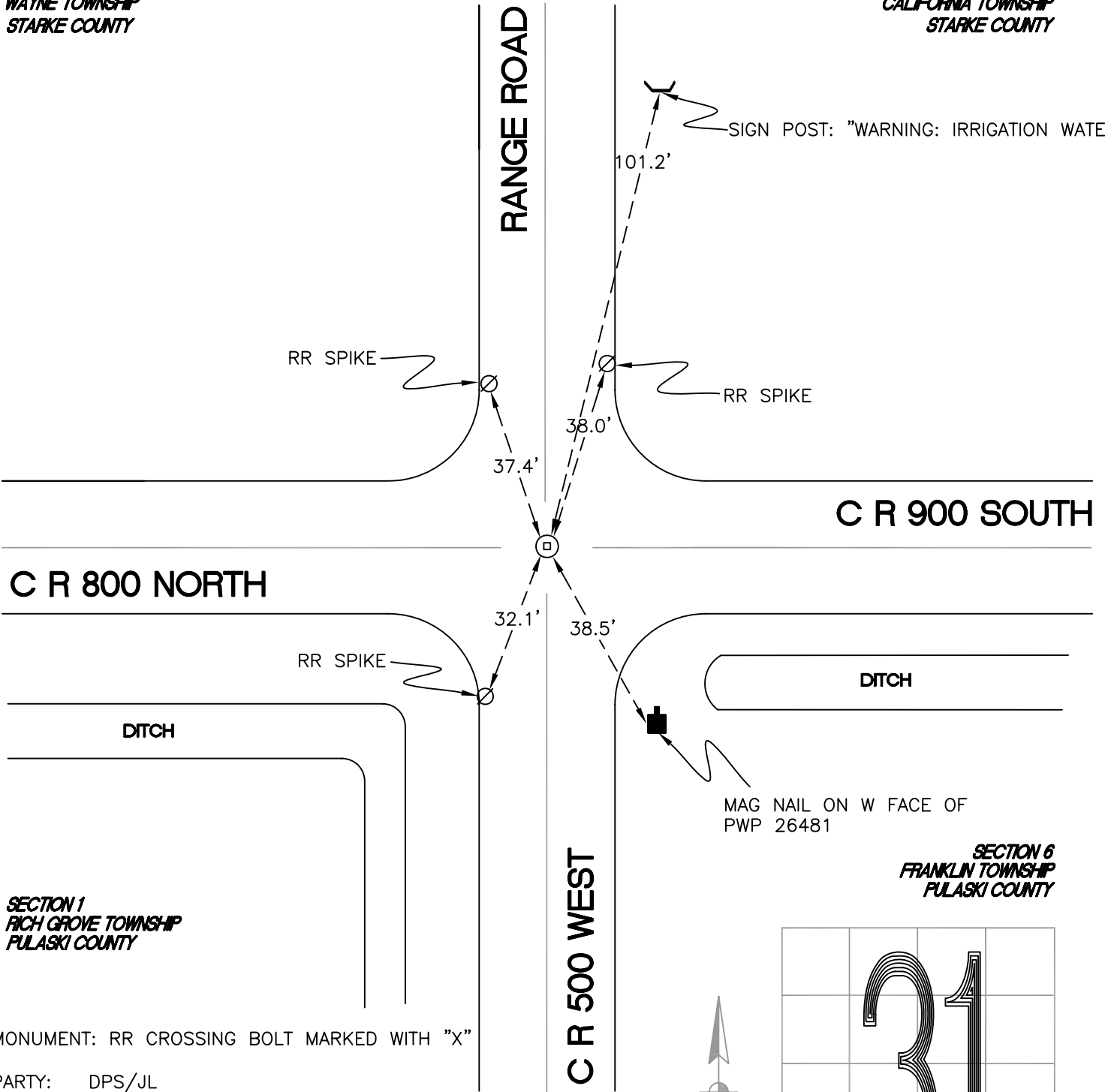
# CALIFORNIA TOWNSHIP

T 32 N, R 2 W

## Z1

SECTION 36  
WAYNE TOWNSHIP  
STARKE COUNTY

SECTION 31  
CALIFORNIA TOWNSHIP  
STARKE COUNTY



SECTION 1  
RICH GROVE TOWNSHIP  
FULASKI COUNTY

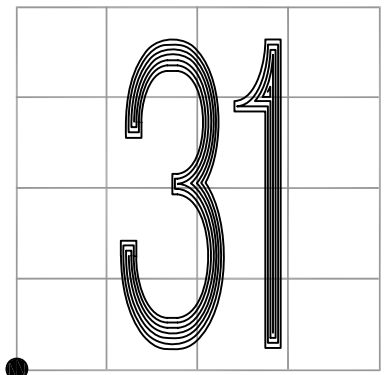
SECTION 6  
FRANKLIN TOWNSHIP  
FULASKI COUNTY

MONUMENT: RR CROSSING BOLT MARKED WITH "X"

PARTY: DPS/JL

DATE: 7/16/14

COMMENTS: RR SPIKE REPLACED WITH CROSSING BOLT  
IN 2004 BY VHJ/COD.



CORNER LOCATION IN THE SECTION

## Z1