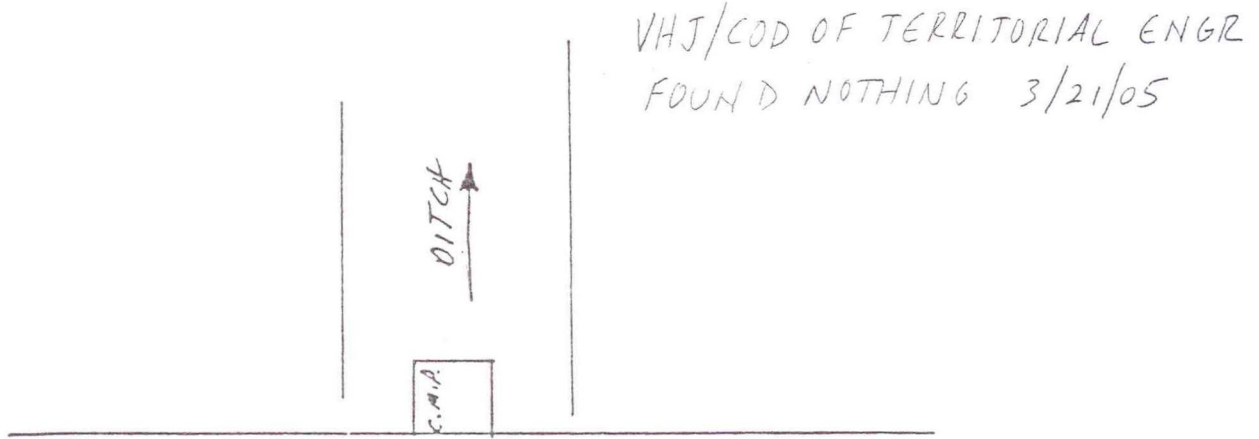
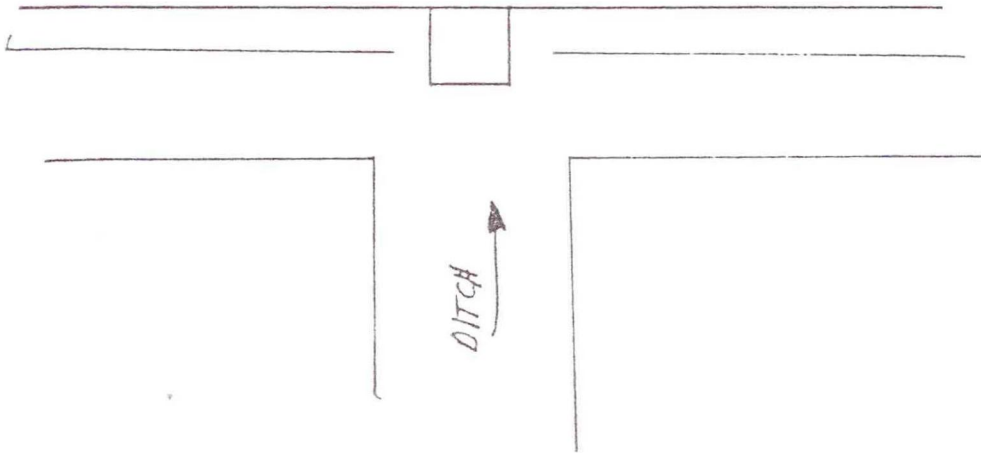


N
↑
SCALE

1. WED. 27 JUNE '90 ALA RLS 0537, P. MAYER &
MONUMENT HAS BEEN DESTROYED BY DITCH & C.M.A.
CONSTRUCTION; WILL NOT DIG. ALSO, REQUIRED DEPTH
OF DIG ($\approx 5'$) WOULD UNDERMINE ROAD AGAINST WATER
LEVEL



CR300H
CHIP & SEAL



SOUTH 1/4 COR. SEC. 33

NO MONUMENT

Z-11