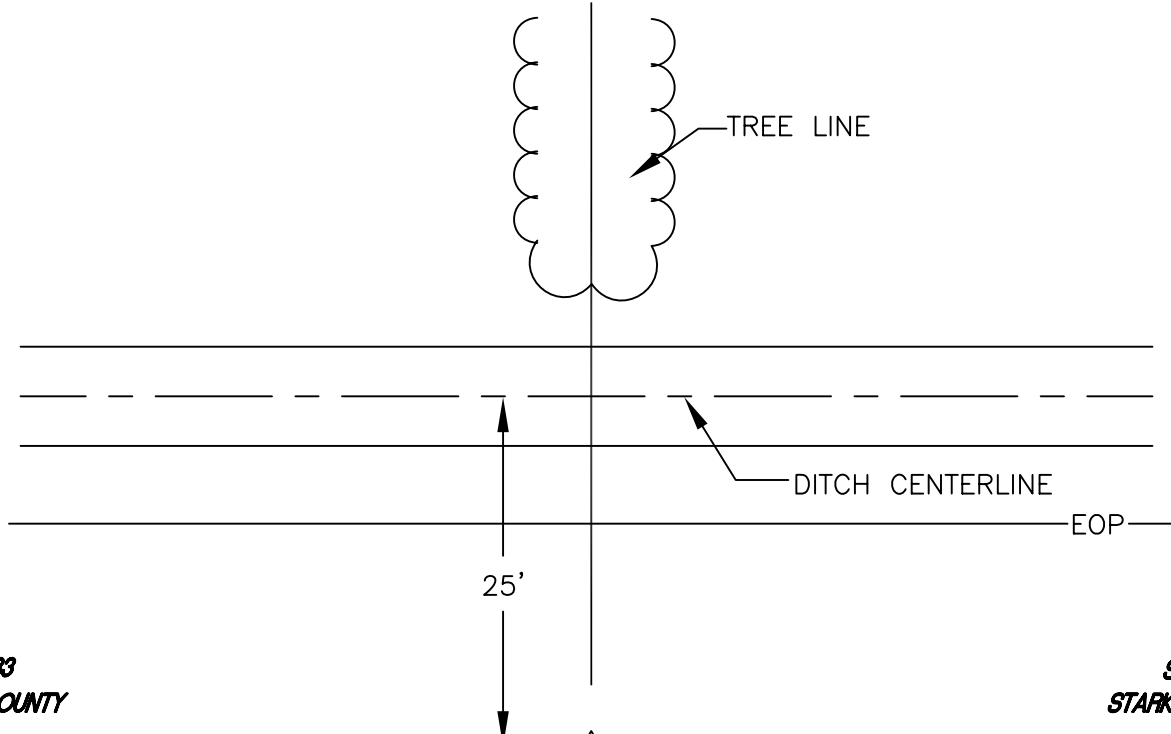


RAILROAD TOWNSHIP

T 32 N, R 4 W

Z11



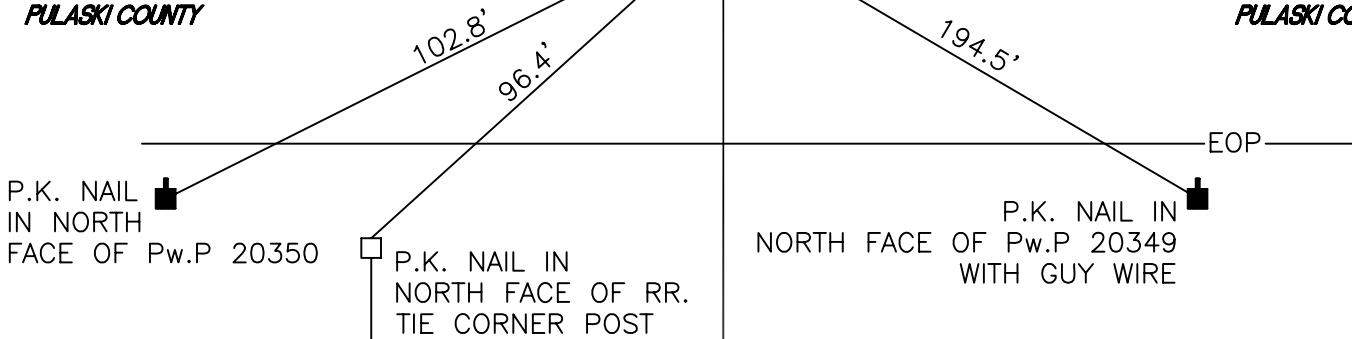
SECTION 33
STARKE COUNTY

SECTION 33
STARKE COUNTY

COUNTY RD. 900 S.

SECTION 4
PULASKI COUNTY

SECTION 4
PULASKI COUNTY



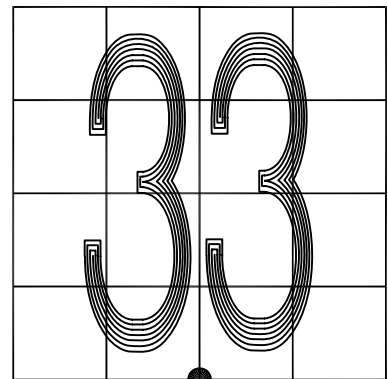
MONUMENT: IRON REINFORCING ROD

CORNER OF: RECORD USE

PARTY: DPS/JL

DATE: 5/7/2015

COMMENTS: FOUND BY DPS/JDS IN 2001



Z11

CORNER LOCATION IN THE SECTION