

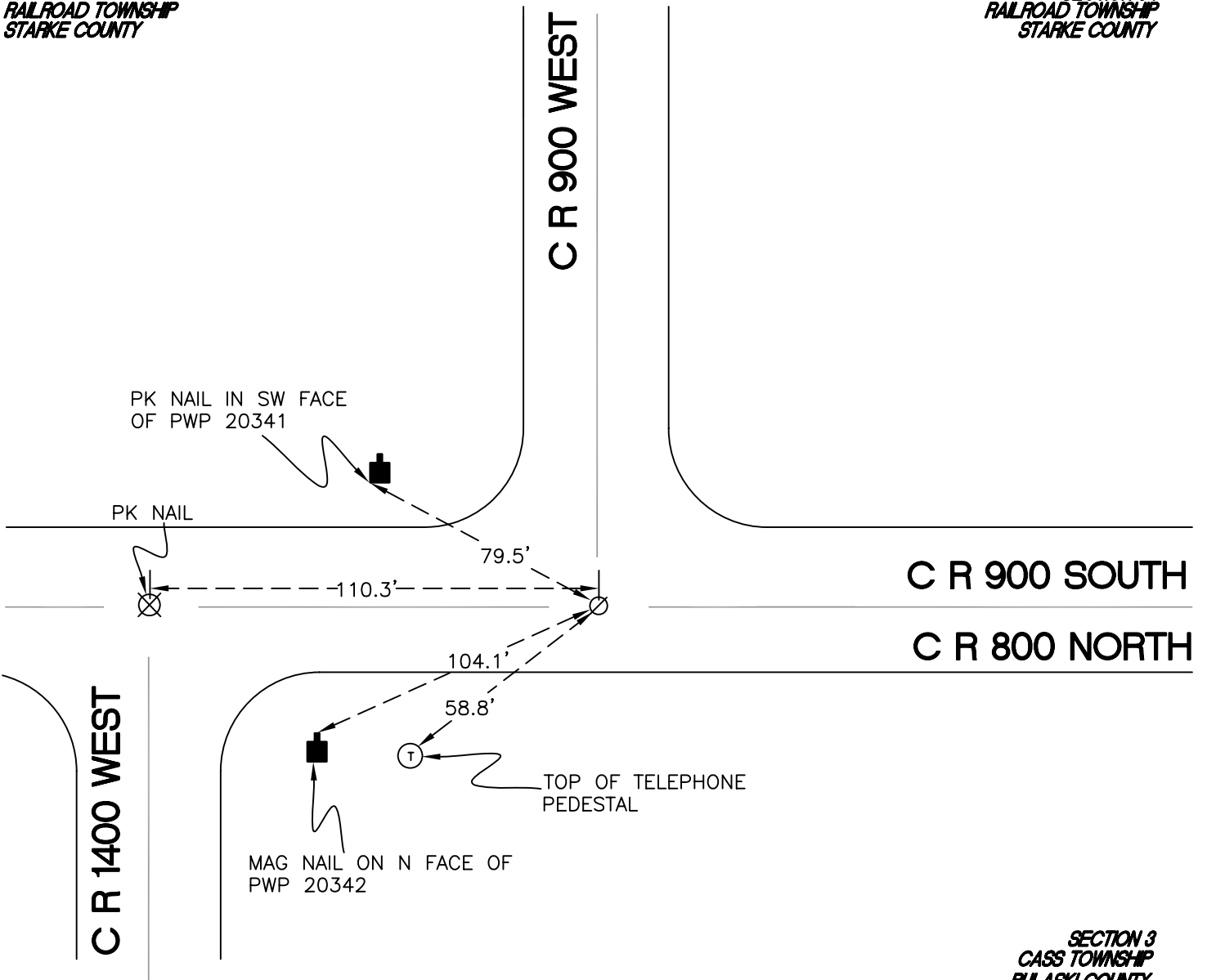
RAILROAD TOWNSHIP

T 32 N, R 4 W

Z13

SECTION 33
RAILROAD TOWNSHIP
STARKE COUNTY

SECTION 34
RAILROAD TOWNSHIP
STARKE COUNTY



SECTION 4
CASS TOWNSHIP
PULASKI COUNTY

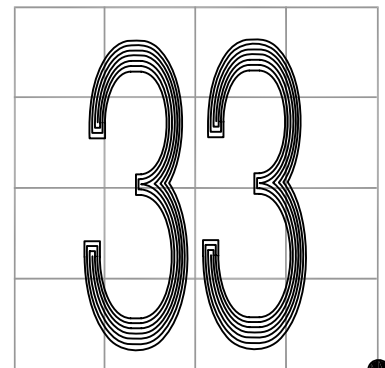
SECTION 3
CASS TOWNSHIP
PULASKI COUNTY

MONUMENT: RR SPIKE

PARTY: DPS/JL

DATE: 5/8/2015

COMMENTS: 1' S OF \odot OF 900 S. USED BY WIGHTMAN CRAMER IN 1996 (BOOK LL, PAGE 252) AND TERRITORIAL ENGINEERING IN 2001 (DOCUMENT # 2001449872)



CORNER LOCATION IN THE SECTION

Z13