

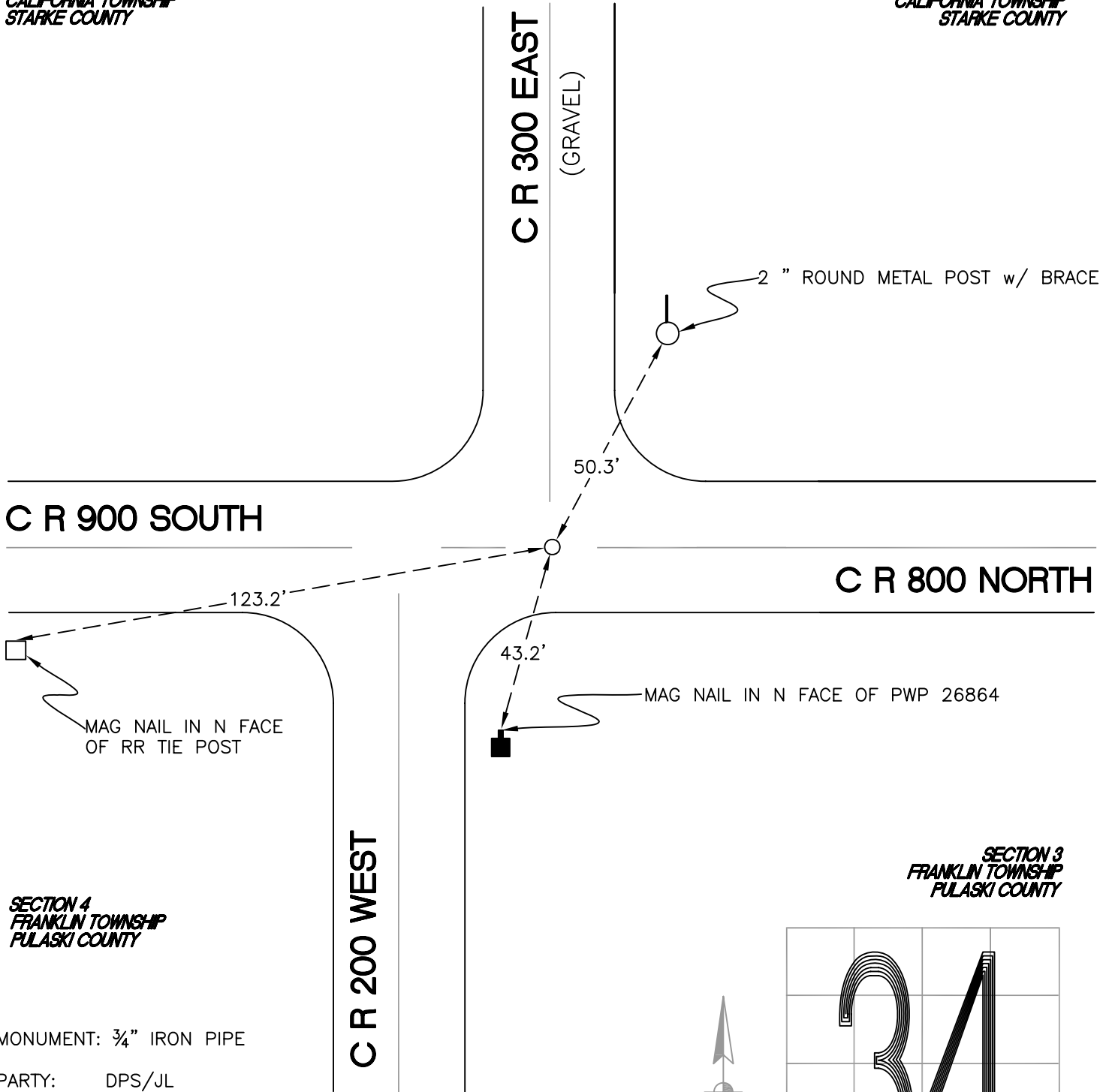
CALIFORNIA TOWNSHIP

T 32 N, R 2 W

Z13

SECTION 33
CALIFORNIA TOWNSHIP
STARKE COUNTY

SECTION 34
CALIFORNIA TOWNSHIP
STARKE COUNTY



SECTION 4
FRANKLIN TOWNSHIP
PULASKI COUNTY

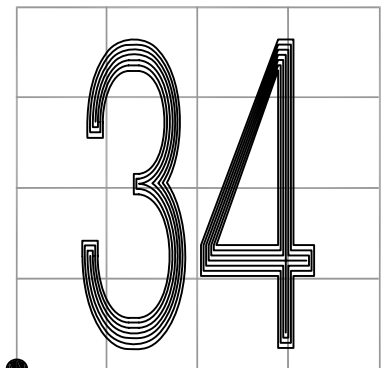
SECTION 3
FRANKLIN TOWNSHIP
PULASKI COUNTY

MONUMENT: 3/4" IRON PIPE

PARTY: DPS/JL

DATE: 7/14/14

COMMENTS: 3" BELOW GRADE
MONUMENT REFERENCED BY C. E. PAUL
IN 1929. FOUND BY DPS/JL IN 2012.
NO PULASKI COUNTY MONUMENT FOUND.



CORNER LOCATION IN THE SECTION

Z13