

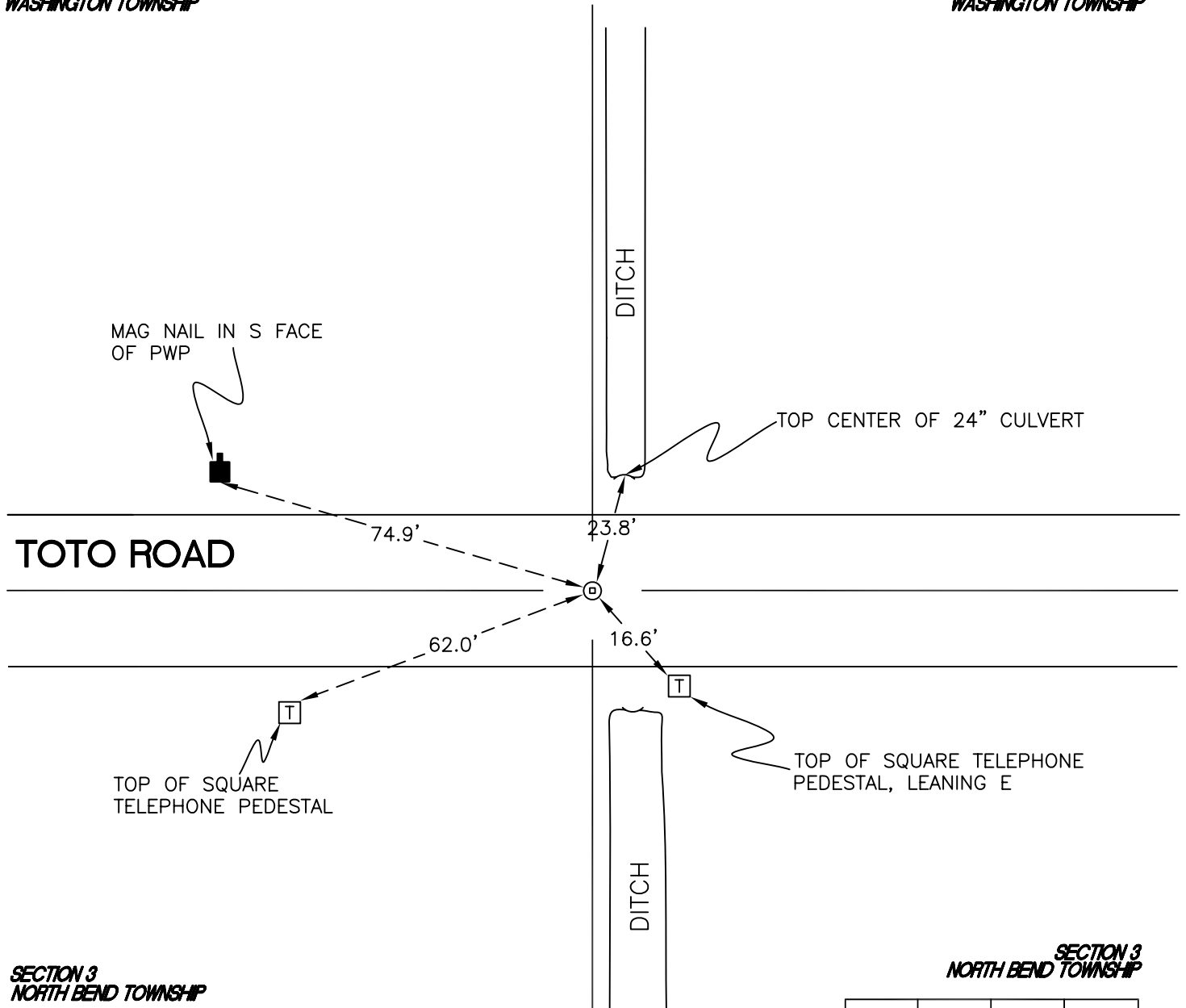
WASHINGTON TOWNSHIP

T 33 N, R 1 W

Z15

SECTION 34
WASHINGTON TOWNSHIP

SECTION 34
WASHINGTON TOWNSHIP



SECTION 3
NORTH BEND TOWNSHIP

SECTION 3
NORTH BEND TOWNSHIP

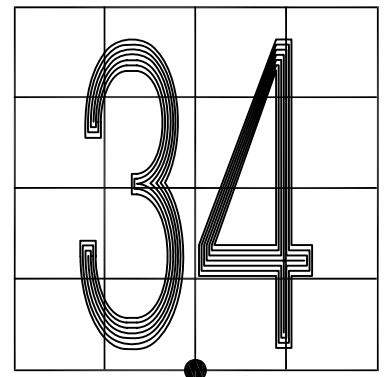
MONUMENT: RR CROSSING BOLT w/ PUNCH MARK

CORNER OF: RECORD USE

PARTY: JL/PM

DATE: 7-9-2008

COMMENTS:



CORNER LOCATION IN THE SECTION

Z15