

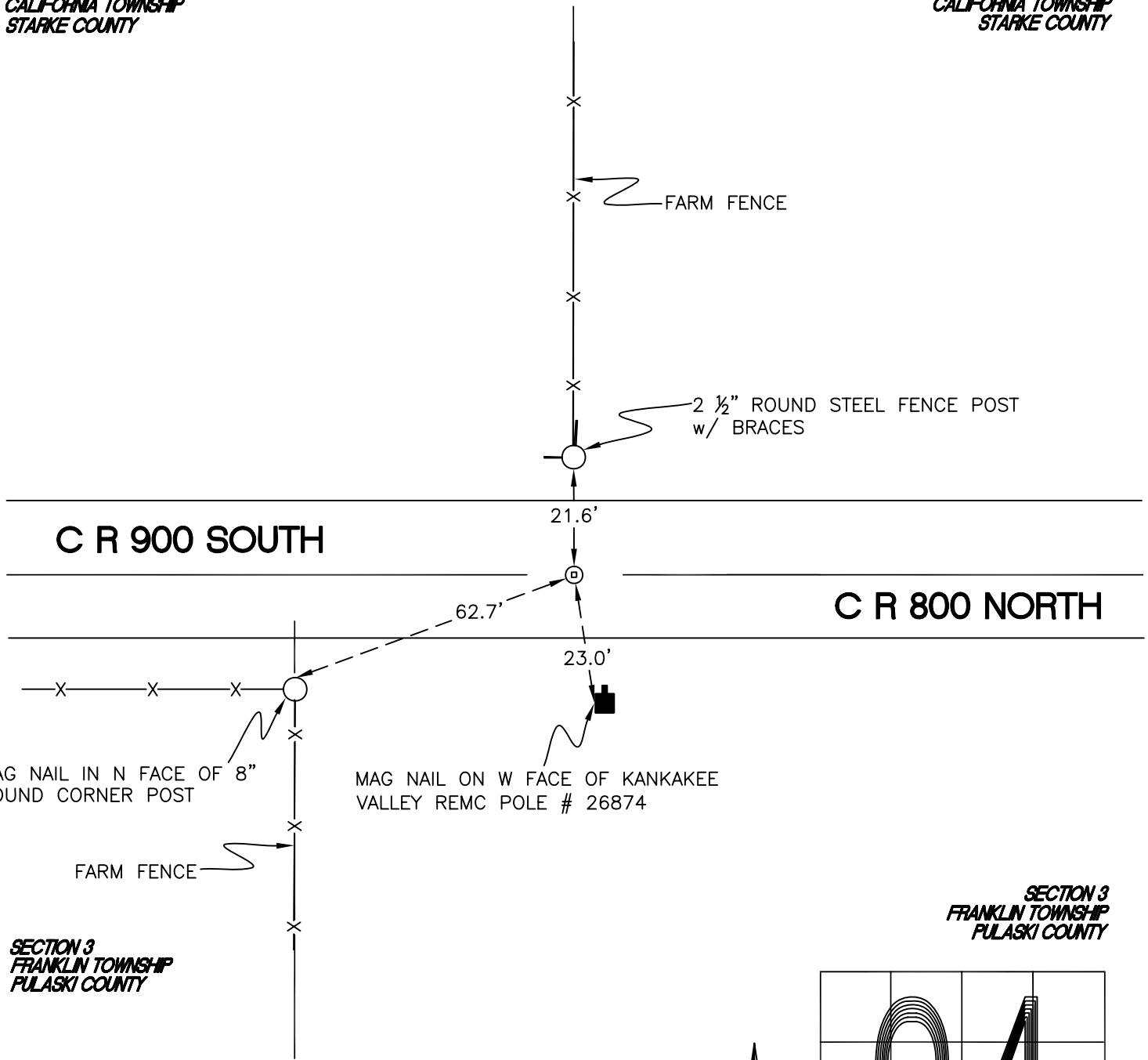
CALIFORNIA TOWNSHIP

T 32 N, R 2 W

Z15

SECTION 34
CALIFORNIA TOWNSHIP
STARKE COUNTY

SECTION 34
CALIFORNIA TOWNSHIP
STARKE COUNTY



MAG NAIL IN N FACE OF 8" ROUND CORNER POST

MAG NAIL ON W FACE OF KANKAKEE VALLEY REMC POLE # 26874

FARM FENCE

SECTION 3
FRANKLIN TOWNSHIP
PULASKI COUNTY

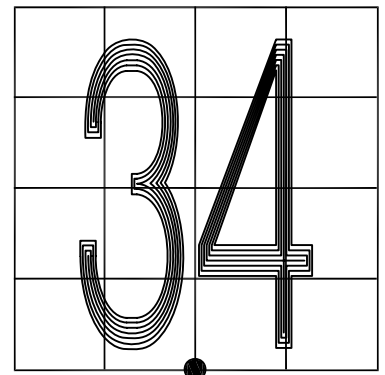
SECTION 3
FRANKLIN TOWNSHIP
PULASKI COUNTY

MONUMENT: RR CROSSING BOLT

PARTY: DPS/JL

DATE: 9/27/12

COMMENTS: SET BY TERRITORIAL ENGINEERING;
DOCUMENT # 2012003710



CORNER LOCATION IN THE SECTION

Z15