

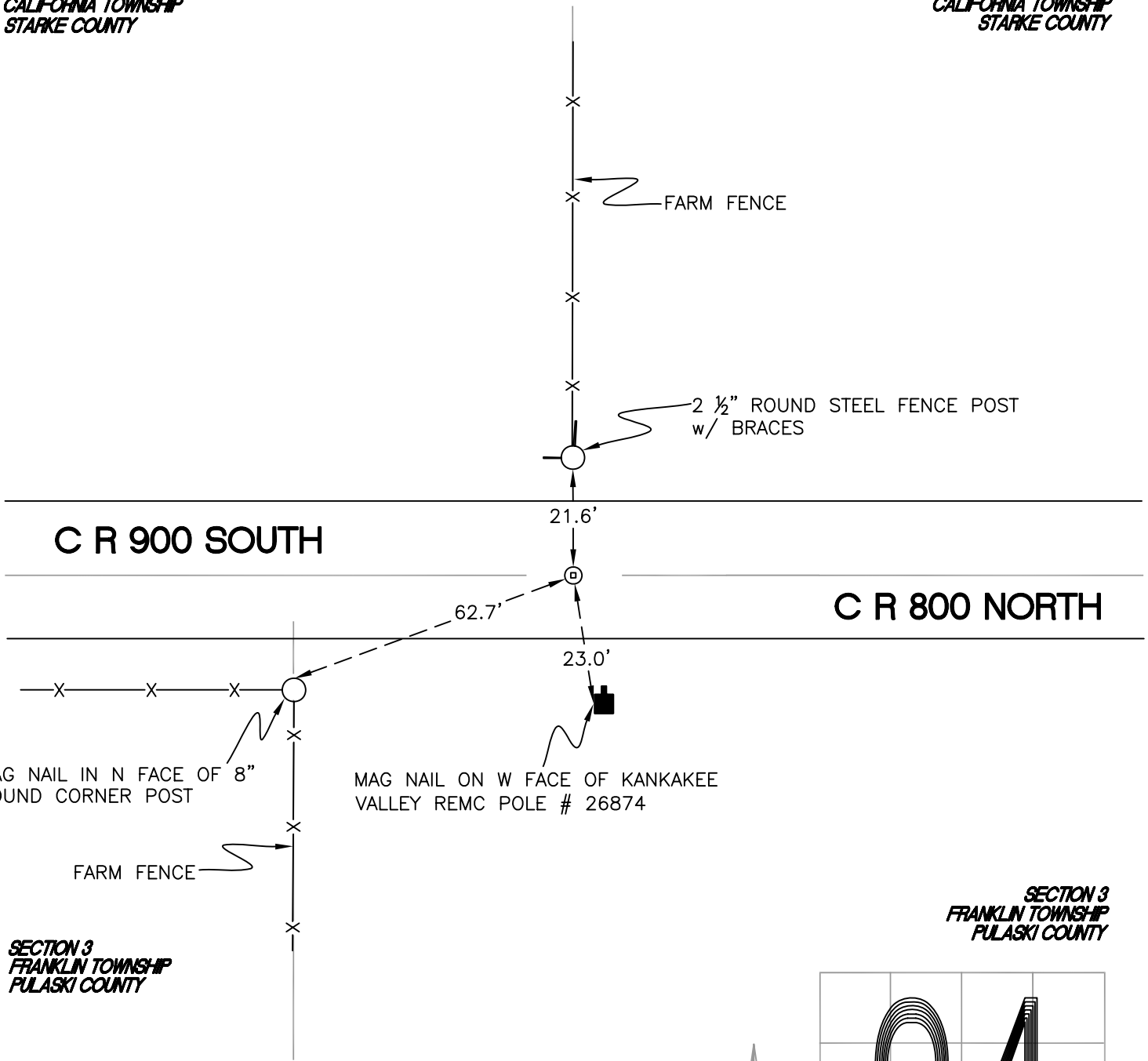
# CALIFORNIA TOWNSHIP

T 32 N, R 2 W

## Z15

*SECTION 34  
CALIFORNIA TOWNSHIP  
STARKE COUNTY*

*SECTION 34  
CALIFORNIA TOWNSHIP  
STARKE COUNTY*



*SECTION 3  
FRANKLIN TOWNSHIP  
PULASKI COUNTY*

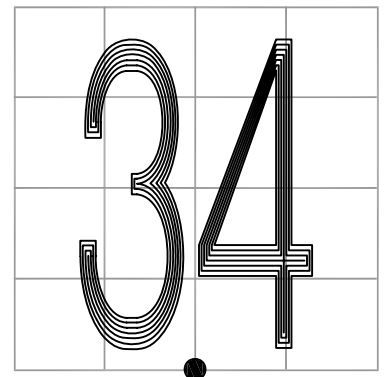
*SECTION 3  
FRANKLIN TOWNSHIP  
PULASKI COUNTY*

MONUMENT: RR CROSSING BOLT

PARTY: DPS/JL

DATE: 7/14/14

COMMENTS: MONUMENT BENT; REFERENCES MEASURED FROM WHERE IT STRAIGHTENS OUT. SET AND REFERENCED BY TERRITORIAL ENGINEERING IN 2012; DOCUMENT # 2012003710.



CORNER LOCATION IN THE SECTION

## Z15