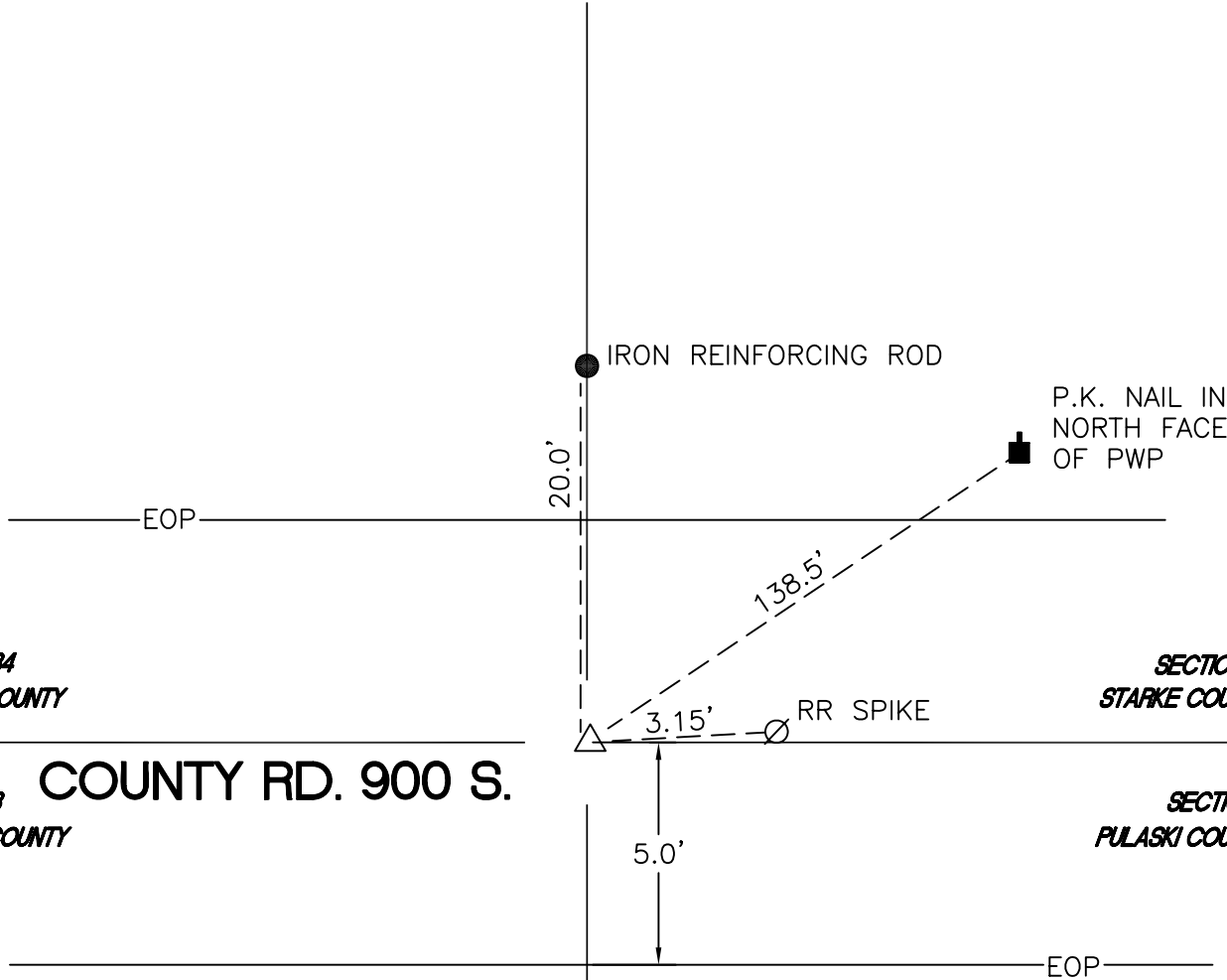


RAILROAD TOWNSHIP

T 32 N, R 4 W

Z16



SECTION 34
STARKE COUNTY

SECTION 34
STARKE COUNTY

SECTION 3
PULASKI COUNTY

COUNTY RD. 900 S.

SECTION 3
PULASKI COUNTY

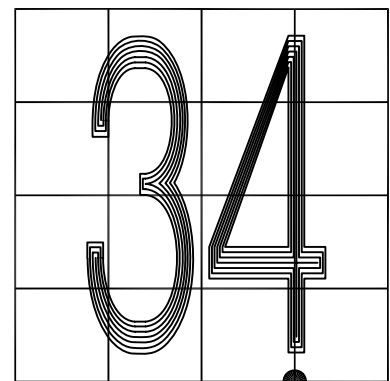
MONUMENT: (F) IRON REINFORCING ROD

CORNER OF: RECORD USE

PARTY: DPS/JL

DATE: 5/7/2015

COMMENTS: MONUMENT NOT FOUND. PREVIOUSLY FOUND IN 2/2001 BY DPS/JDS.



Z16

CORNER LOCATION IN THE SECTION