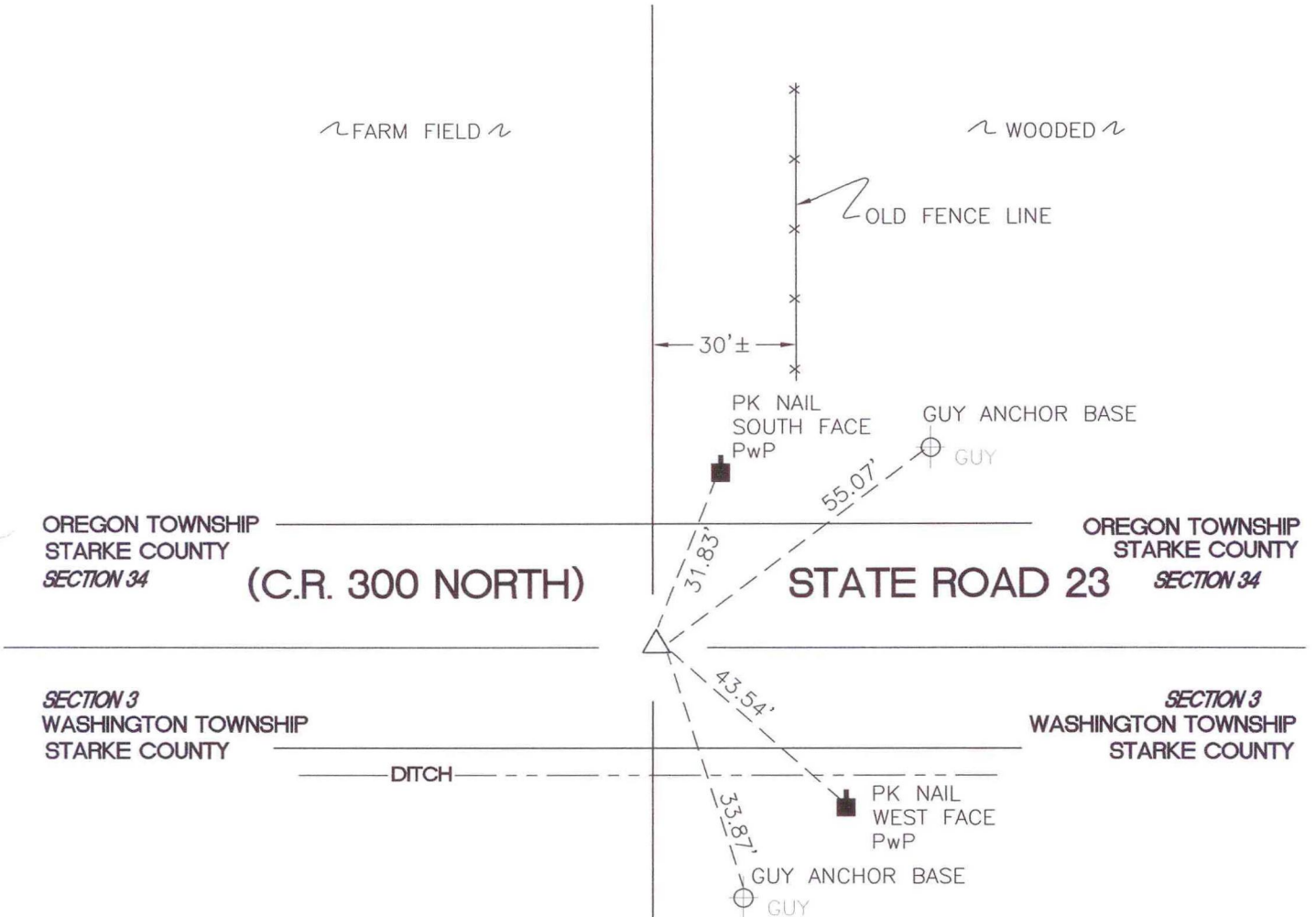


OREGON TOWNSHIP

T 34 N, R 1 W



MONUMENT: (F)HWY BOX/IRON ROD 2" BELOW GRADE

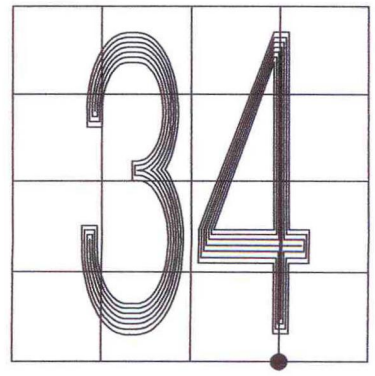
CORNER OF: RECORD USE

PARTY: VHJ/GR

DATE: 3-17-05

COMMENTS:
 HISTORY: RLP, OF THE STARKE CO.
 SURVEYOR'S OFFICE FOUND IRON MONUMENT
 (AN OLD EENCE POST) 10" BELOW GRADE
 ON JULY 14, 1983.

INDEX NUMBER
Z16



CORNER LOCATION IN THE SECTION