

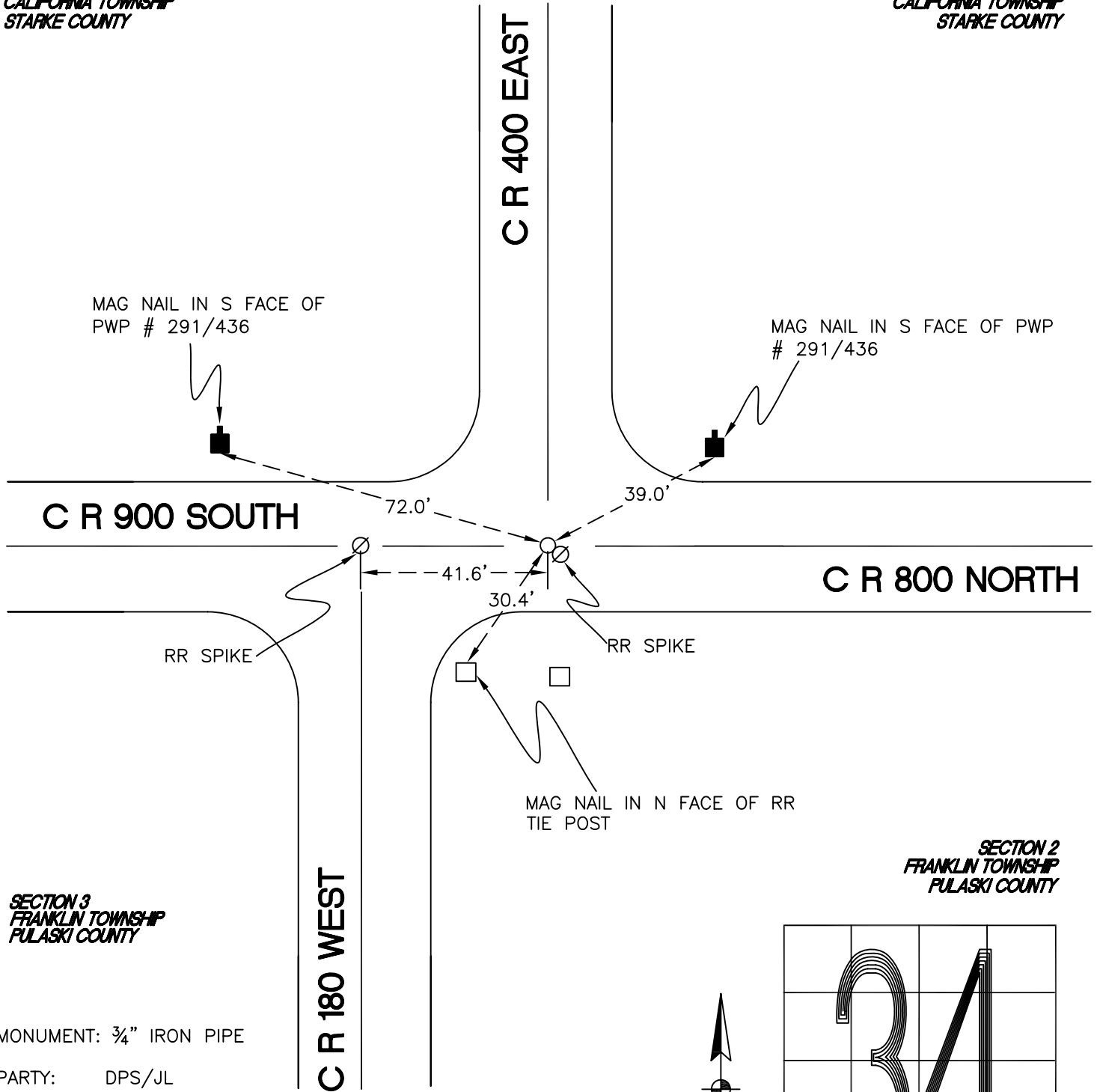
# CALIFORNIA TOWNSHIP

T 32 N, R 2 W

## Z17

SECTION 34  
CALIFORNIA TOWNSHIP  
STARKE COUNTY

SECTION 35  
CALIFORNIA TOWNSHIP  
STARKE COUNTY

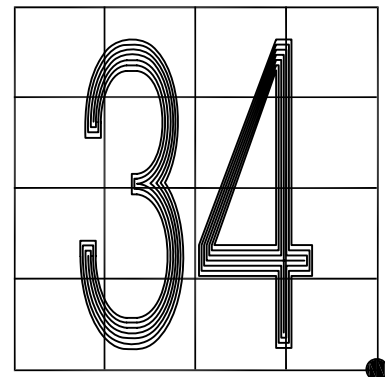


MONUMENT: 3/4" IRON PIPE

PARTY: DPS/JL

DATE: 10/15/12

COMMENTS: RR SPIKE IS DIRECTLY TO THE SE OF THE MONUMENT. MONUMENT REFERENCED BY C. E. PAUL IN 1929.



CORNER LOCATION IN THE SECTION

## Z17