

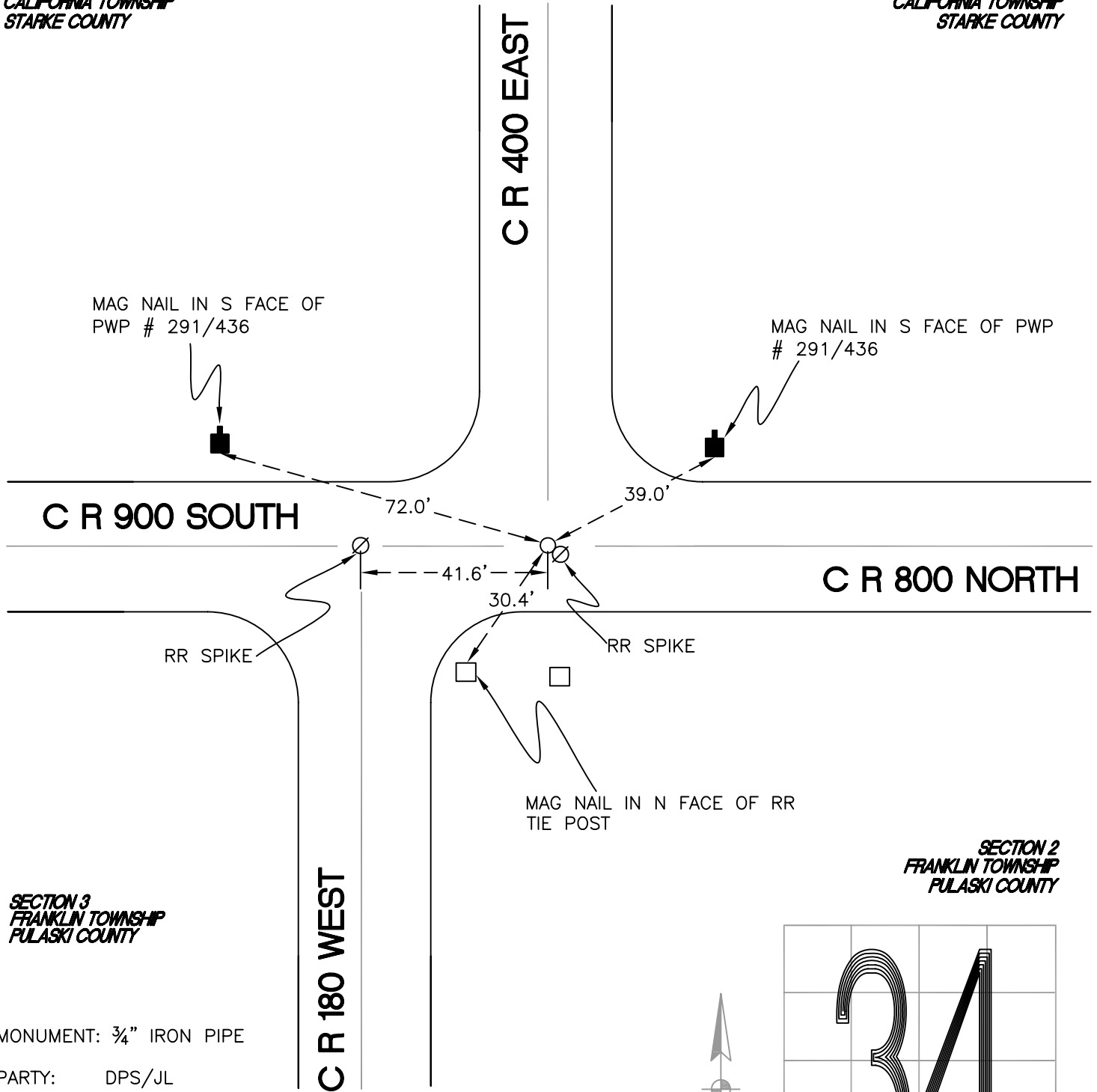
# CALIFORNIA TOWNSHIP

T 32 N, R 2 W

## Z17

SECTION 34  
CALIFORNIA TOWNSHIP  
STARKE COUNTY

SECTION 35  
CALIFORNIA TOWNSHIP  
STARKE COUNTY



SECTION 3  
FRANKLIN TOWNSHIP  
PULASKI COUNTY

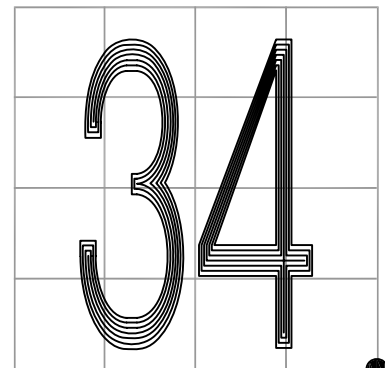
SECTION 2  
FRANKLIN TOWNSHIP  
PULASKI COUNTY

MONUMENT: 3/4" IRON PIPE

PARTY: DPS/JL

DATE: 7/15/14

COMMENTS: RR SPIKE IS DIRECTLY TO THE SE OF THE MONUMENT. MONUMENT REFERENCED BY C. E. PAUL IN 1929. FOUND BY DPS/JL IN 2012.



CORNER LOCATION IN THE SECTION

## Z17