

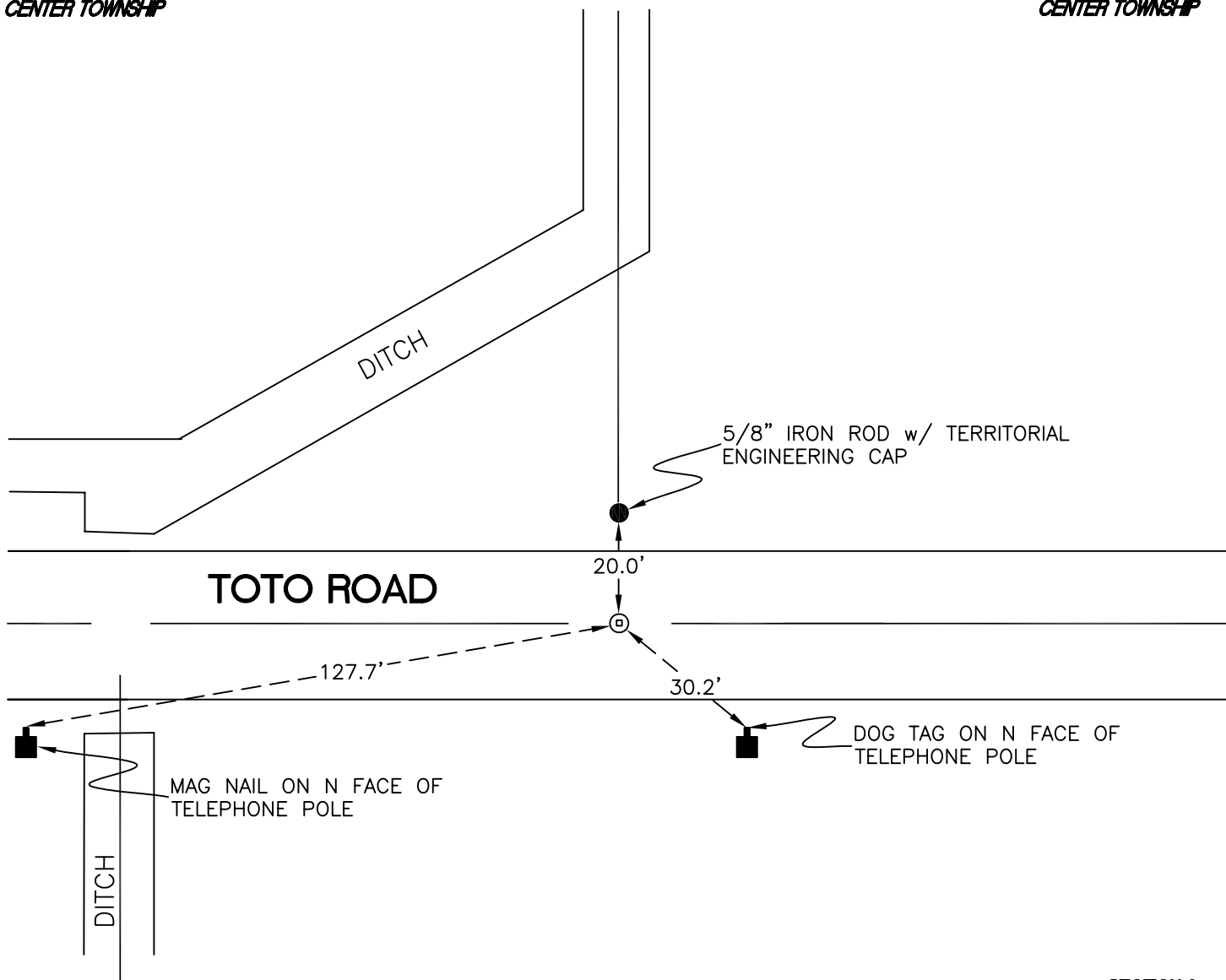
CENTER TOWNSHIP

T 33 N, R 2 W

Z19

*SECTION 35
CENTER TOWNSHIP*

*SECTION 35
CENTER TOWNSHIP*



*SECTION 2
CALIFORNIA TOWNSHIP*

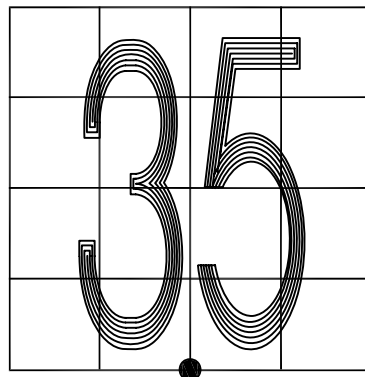
*SECTION 2
CALIFORNIA TOWNSHIP*

MONUMENT: RAILROAD CROSSING BOLT

PARTY: VHJ/JL

DATE: 2/12/2013

COMMENTS: 2" BELOW GRADE. CROSSING BOLT REPLACES BENT RAILROAD SPIKE. CALIFORNIA TOWNSHIP CORNER NOT ESTABLISHED.



CORNER LOCATION IN THE SECTION

Z19