

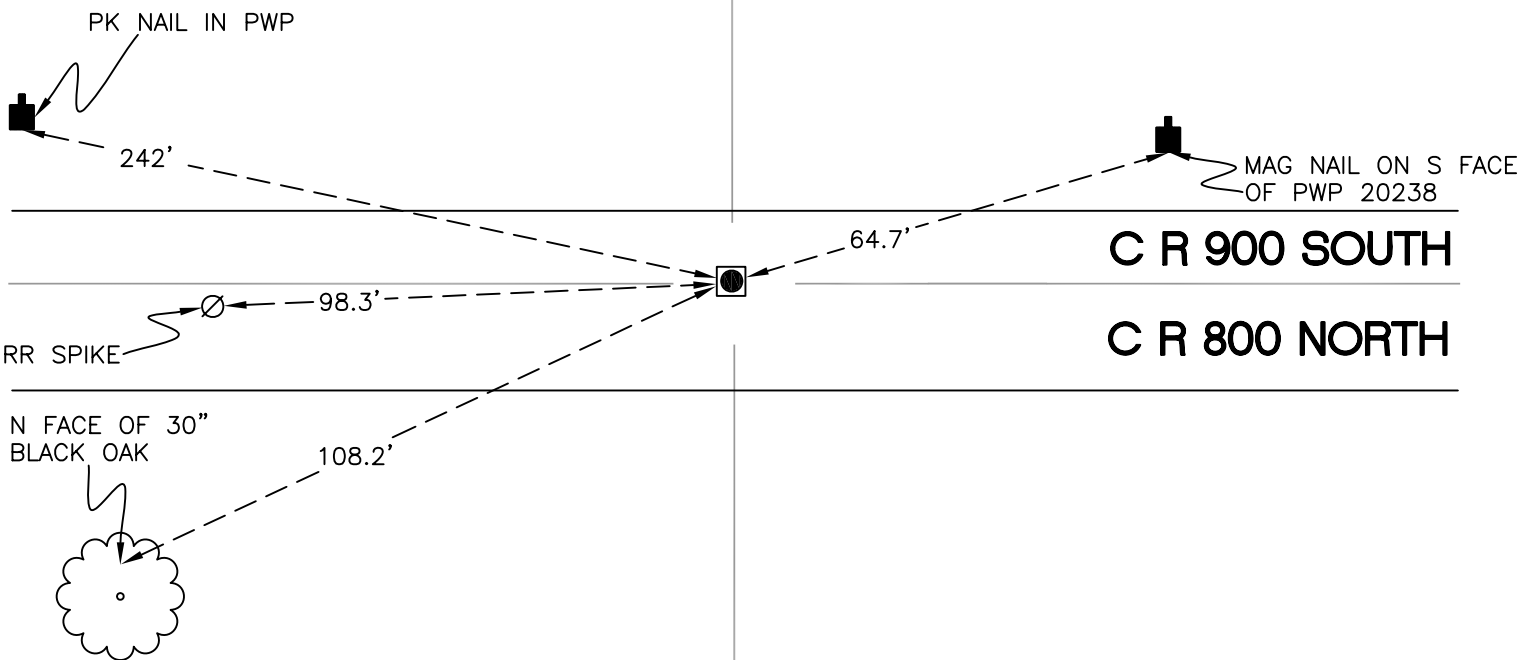
RAILROAD TOWNSHIP

T 32 N, R 4 W

Z19

*SECTION 35
RAILROAD TOWNSHIP
STARKE COUNTY*

*SECTION 35
RAILROAD TOWNSHIP
STARKE COUNTY*



*SECTION 2
CASS TOWNSHIP
PULASKI COUNTY*

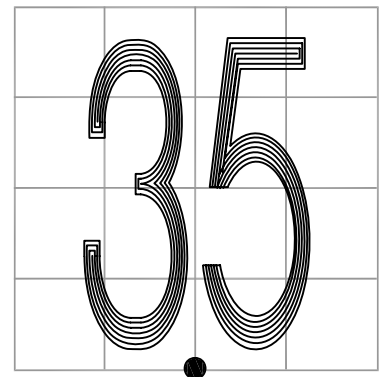
*SECTION 2
CASS TOWNSHIP
PULASKI COUNTY*

MONUMENT: NUT ON THREADED BOLT

PARTY: DPS/JL

DATE: 5/7/2015

COMMENTS: MONUMENT IS 2' N OF \odot OF 900 S.
RAILROAD CROSSING BOLT FOUND BY
DWC/DT IN 1994.



CORNER LOCATION IN THE SECTION

Z19