

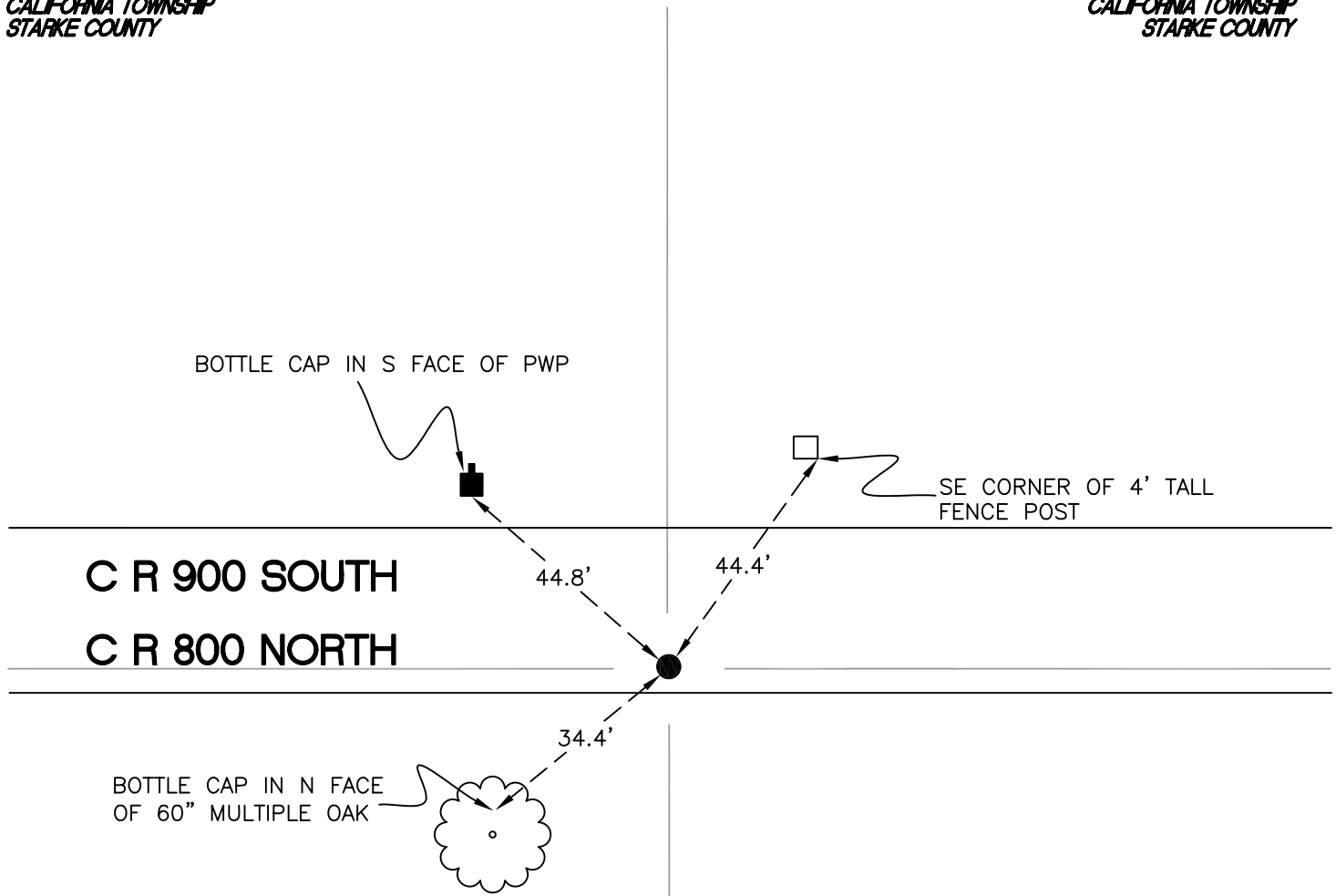
CALIFORNIA TOWNSHIP

T 32 N, R 2 W

Z19

*SECTION 35
CALIFORNIA TOWNSHIP
STARKE COUNTY*

*SECTION 35
CALIFORNIA TOWNSHIP
STARKE COUNTY*



*SECTION 2
FRANKLIN TOWNSHIP
PULASKI COUNTY*

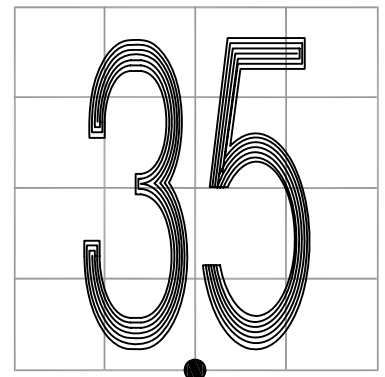
*SECTION 2
FRANKLIN TOWNSHIP
PULASKI COUNTY*

MONUMENT: CAPPED IRON ROD

PARTY: DPS/JL

DATE: 7/15/14

COMMENTS: FOUND BY INDOT IN 2012. ALSO FOUND BY TERRITORIAL ENGINEERING IN 2007 AS SHOWN IN DOCUMENT # 2007001995. MONUMENT IS 10' S OF \mathcal{C} OF 900 S.



CORNER LOCATION IN THE SECTION

Z19