

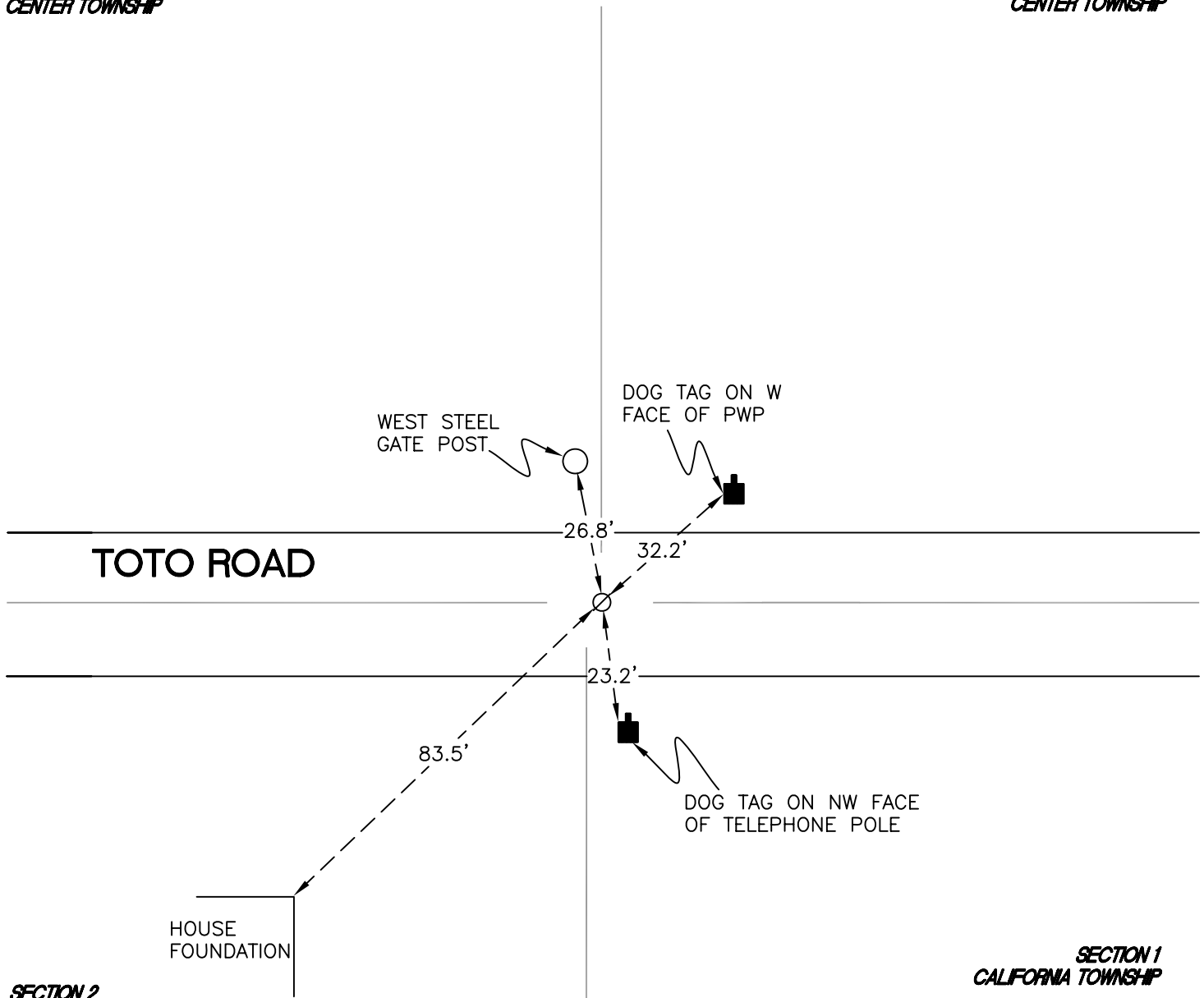
# CENTER TOWNSHIP

T 33 N, R 2 W

## Z21

SECTION 35  
CENTER TOWNSHIP

SECTION 36  
CENTER TOWNSHIP



SECTION 2  
CALIFORNIA TOWNSHIP

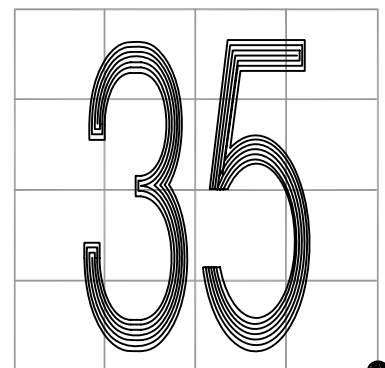
SECTION 1  
CALIFORNIA TOWNSHIP

MONUMENT: RAILROAD SPIKE

PARTY: VHJ/JL

DATE: 2/7/2013

COMMENTS: RAILROAD SPIKE OVER STONE FOUND IN 2000 BY VHJ/HJC. IRON PIPE SET OVER STONE IN 1982 BY VHJ/JBS. BASED ON THE 1832 GOVERNMENT SURVEY, THE CALIFORNIA TOWNSHIP CORNER IS 4 LINKS (2.64') W OF THIS CORNER. CALIFORNIA TOWNSHIP CORNER NOT FOUND OR SET.



CORNER LOCATION IN THE SECTION

# Z21