

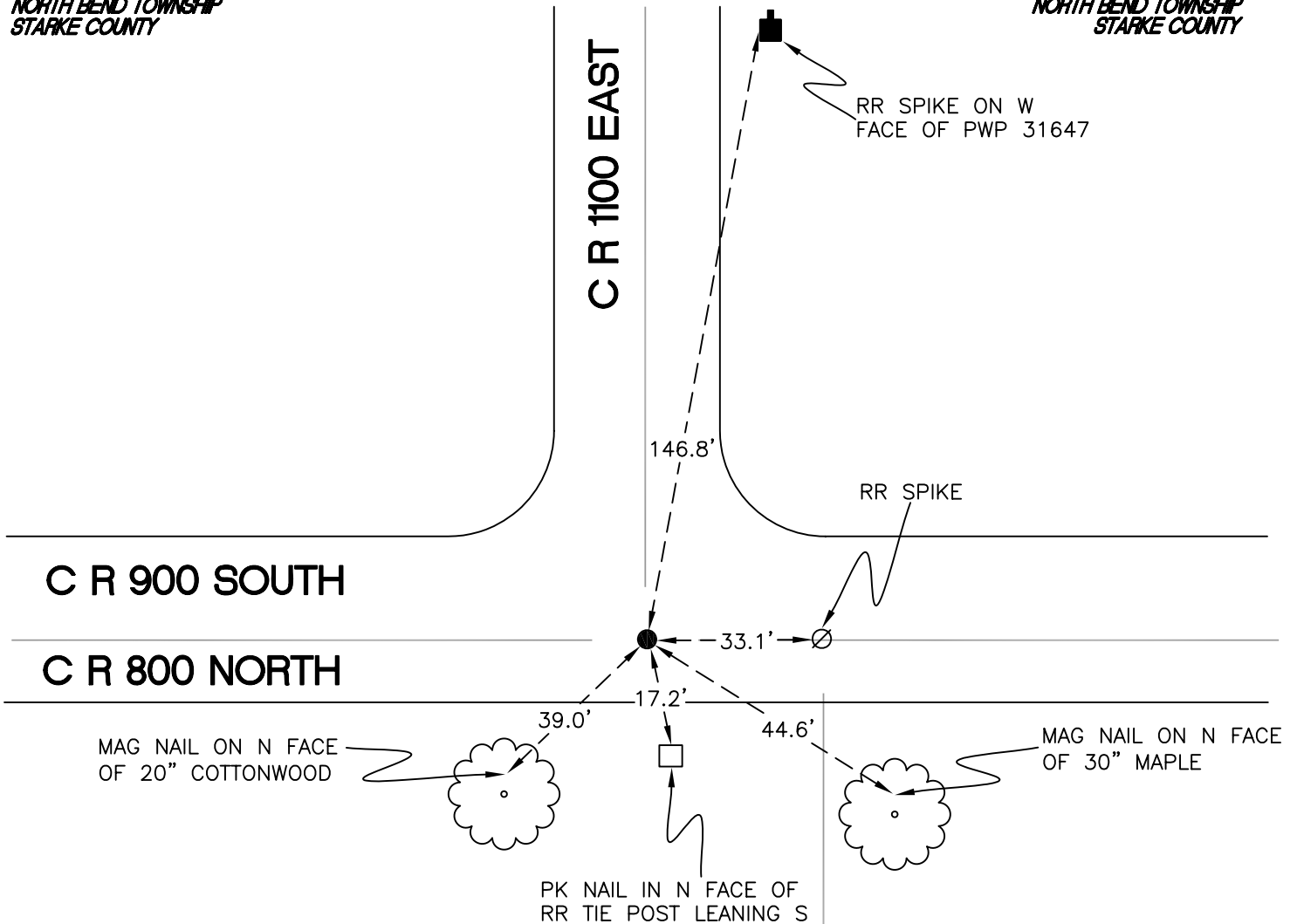
NORTH BEND TOWNSHIP

T 32 N, R 1 W

Z21

SECTION 35
NORTH BEND TOWNSHIP
STARKE COUNTY

SECTION 36
NORTH BEND TOWNSHIP
STARKE COUNTY



SECTION 2
TIPPECANOE TOWNSHIP
PULASKI COUNTY

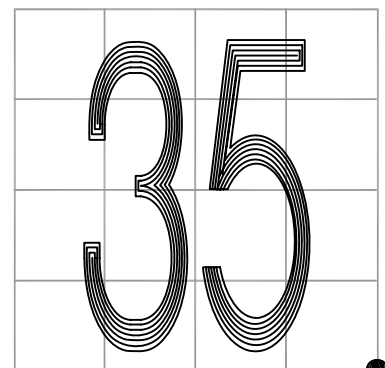
SECTION 1
TIPPECANOE TOWNSHIP
PULASKI COUNTY

MONUMENT: 3/4" IRON ROD

PARTY: JL/AO

DATE: 6/18/12

COMMENTS: 5" BELOW GRADE; 3' S OF C OF 900S;
1' E OF C OF 1100 E.
FOUND IN 1986 BY SJF.



CORNER LOCATION IN THE SECTION

Z21