

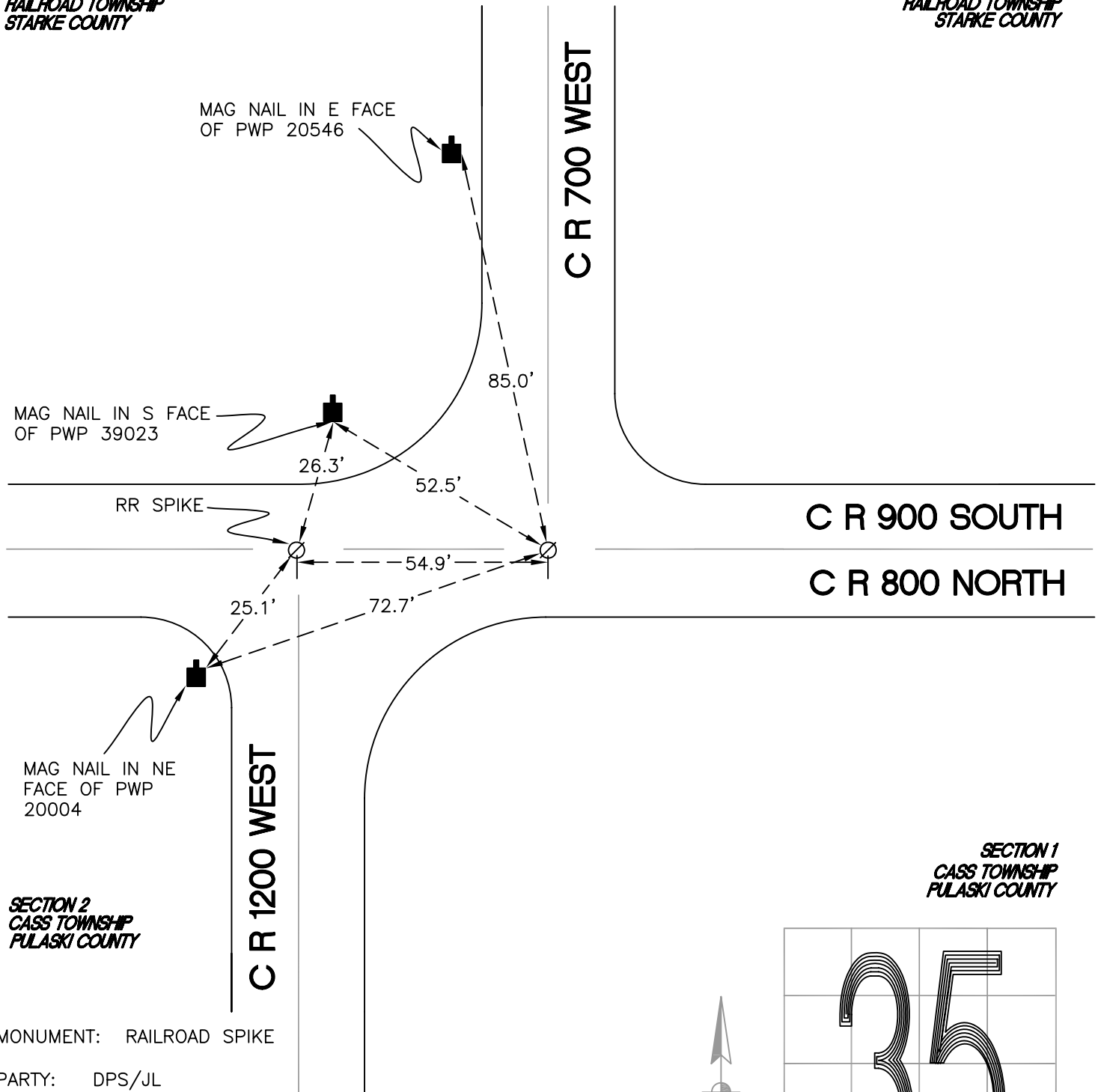
RAILROAD TOWNSHIP

T 32 N, R 4 W

Z21

*SECTION 35
RAILROAD TOWNSHIP
STARKE COUNTY*

*SECTION 36
RAILROAD TOWNSHIP
STARKE COUNTY*



*SECTION 2
CASS TOWNSHIP
PULASKI COUNTY*

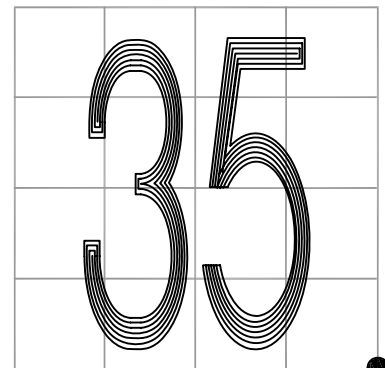
*SECTION 1
CASS TOWNSHIP
PULASKI COUNTY*

MONUMENT: RAILROAD SPIKE

PARTY: DPS/JL

DATE: 5/7/2015

COMMENTS: MONUMENT IS 4" BELOW GRADE. FOUND BY DWC/DT IN 1994.



CORNER LOCATION IN THE SECTION

Z21