

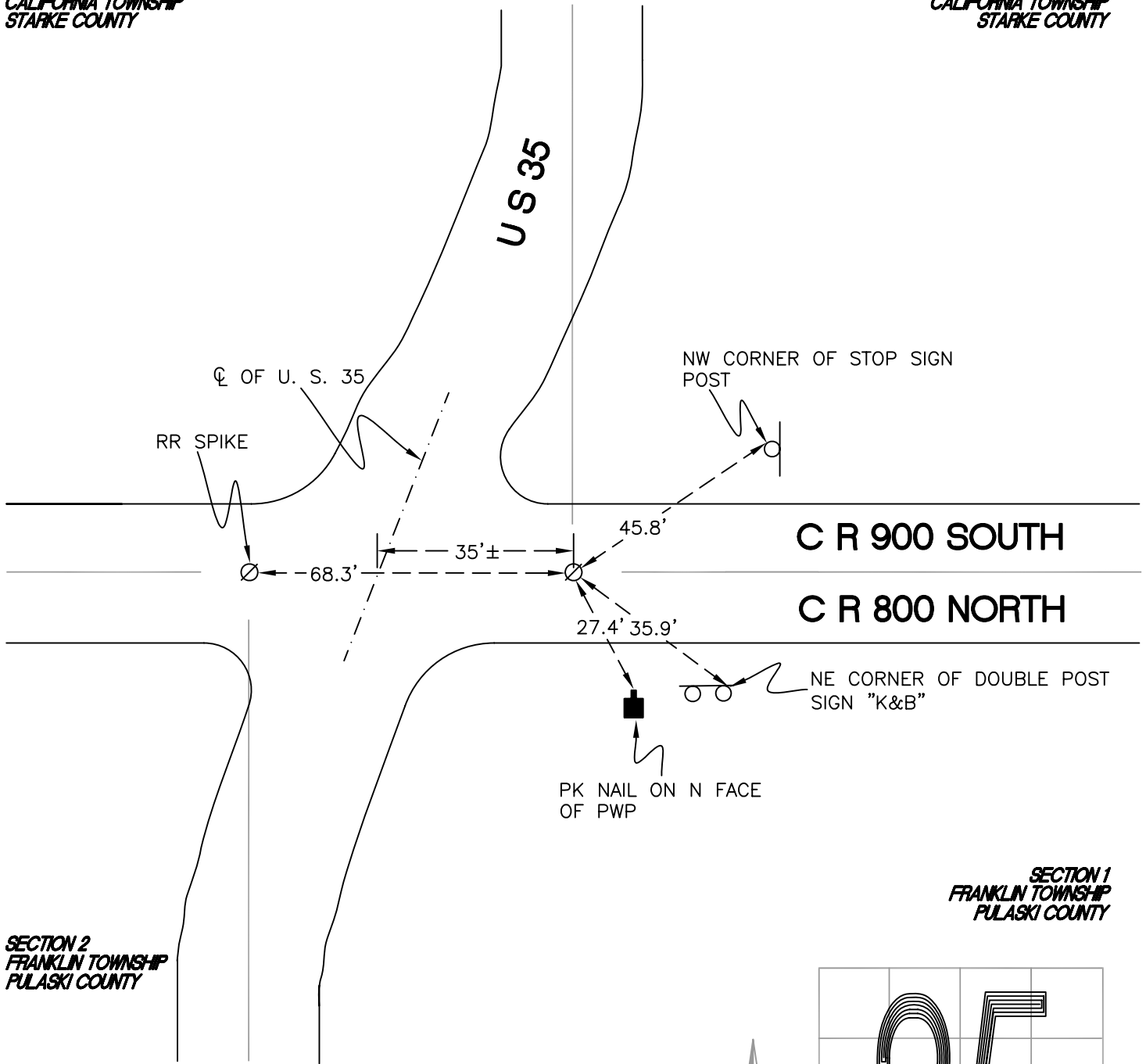
CALIFORNIA TOWNSHIP

T 32 N, R 2 W

Z21

SECTION 35
CALIFORNIA TOWNSHIP
STARKE COUNTY

SECTION 36
CALIFORNIA TOWNSHIP
STARKE COUNTY



SECTION 2
FRANKLIN TOWNSHIP
PULASKI COUNTY

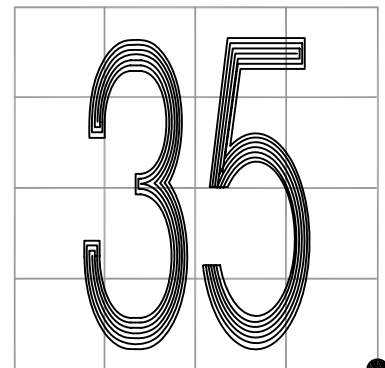
SECTION 1
FRANKLIN TOWNSHIP
PULASKI COUNTY

MONUMENT: RAILROAD SPIKE

PARTY: DPS/JL

DATE: 7/14/14

COMMENTS: FOUND AND REFERENCED BY INDOT IN 2012.
ALSO FOUND AND USED IN A SURVEY BY
TERRITORIAL ENGINEERING IN 2007;
DOCUMENT # 2007001995.



CORNER LOCATION IN THE SECTION

Z21