

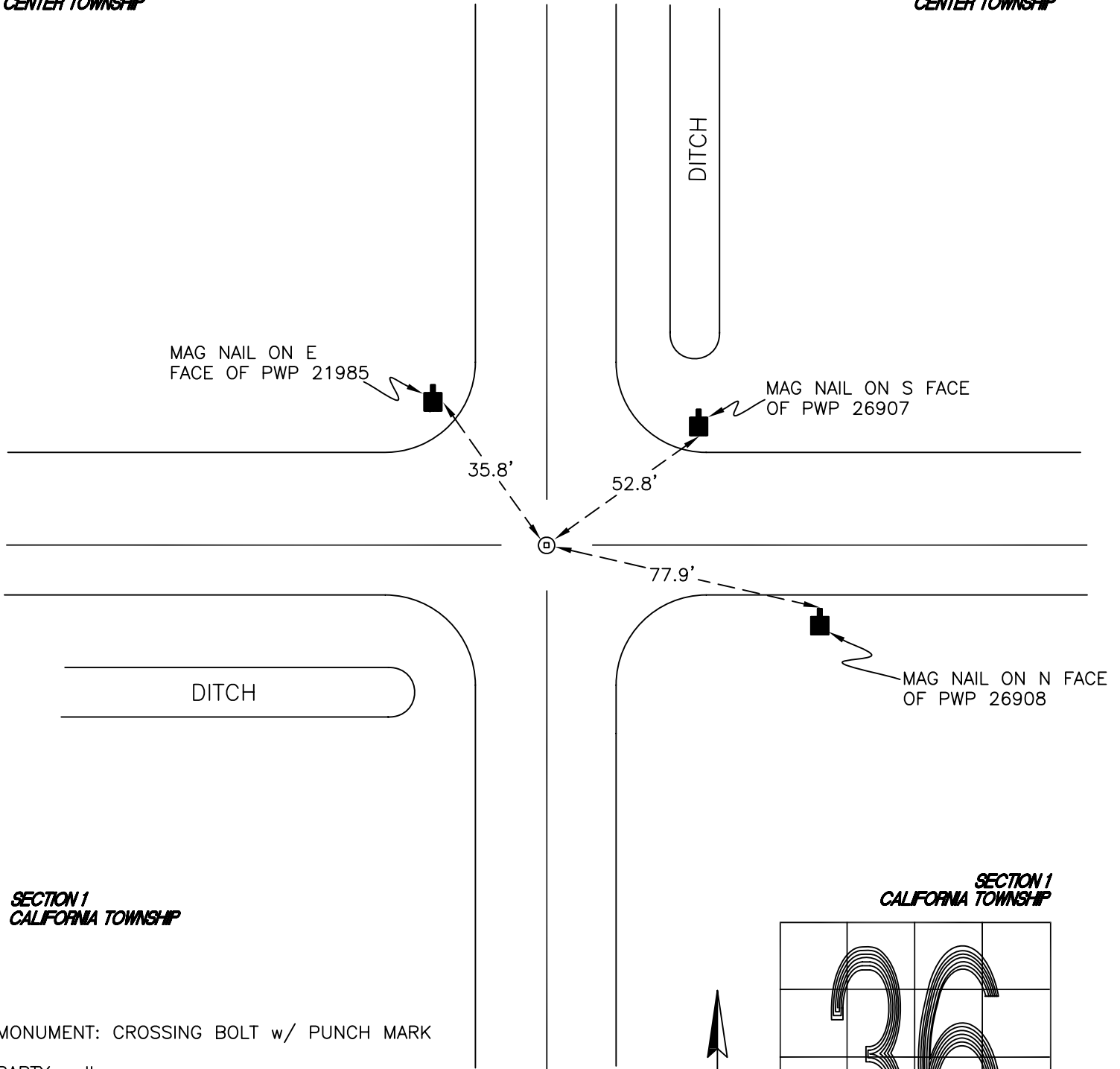
CENTER TOWNSHIP

T 33 N, R 2 W

Z23

*SECTION 36
CENTER TOWNSHIP*

*SECTION 36
CENTER TOWNSHIP*



*SECTION 1
CALIFORNIA TOWNSHIP*

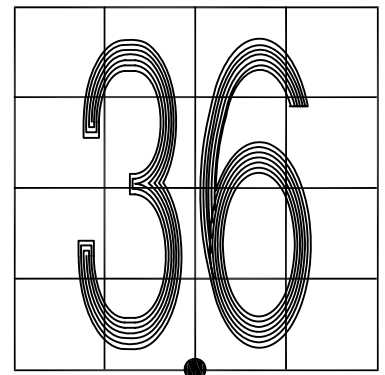
*SECTION 1
CALIFORNIA TOWNSHIP*

MONUMENT: CROSSING BOLT w/ PUNCH MARK

PARTY: JL

DATE: 10/26/11

COMMENTS: 3' S OF \oslash OF TOTO ROAD



CORNER LOCATION IN THE SECTION

Z23