

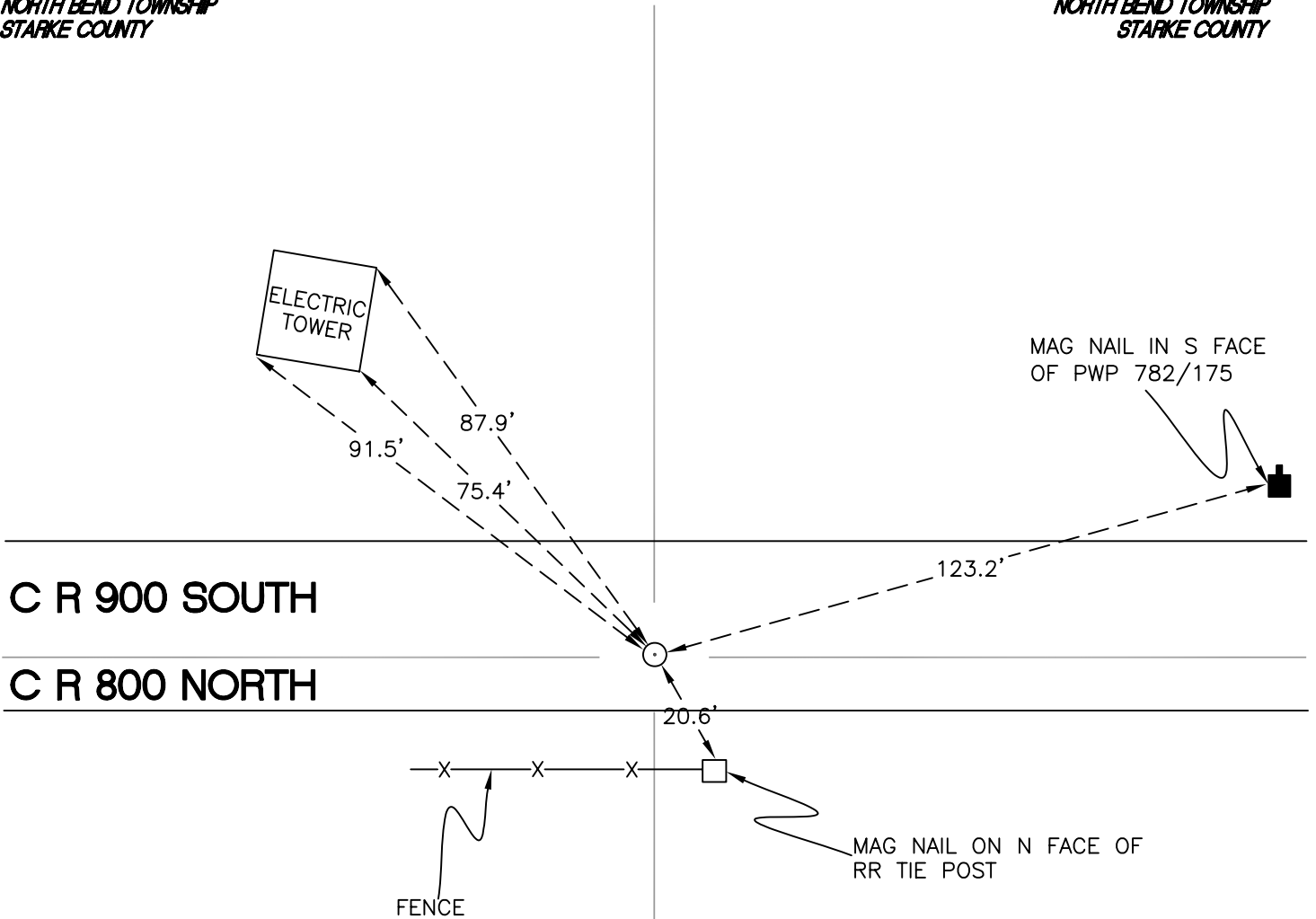
NORTH BEND TOWNSHIP

T 32 N, R 1 W

Z23

*SECTION 36
NORTH BEND TOWNSHIP
STARKE COUNTY*

*SECTION 36
NORTH BEND TOWNSHIP
STARKE COUNTY*



*SECTION 1
TIPPECANOE TOWNSHIP
PULASKI COUNTY*

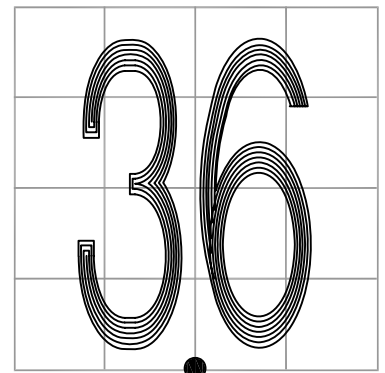
*SECTION 1
TIPPECANOE TOWNSHIP
PULASKI COUNTY*

MONUMENT: RAIL BOLT

PARTY: JL/AO

DATE: 6/18/12

COMMENTS: 2" BELOW GRADE; 5' S OF C OF 900 S.
FOUND BY SJF/DWC IN 1989.



CORNER LOCATION IN THE SECTION

Z23