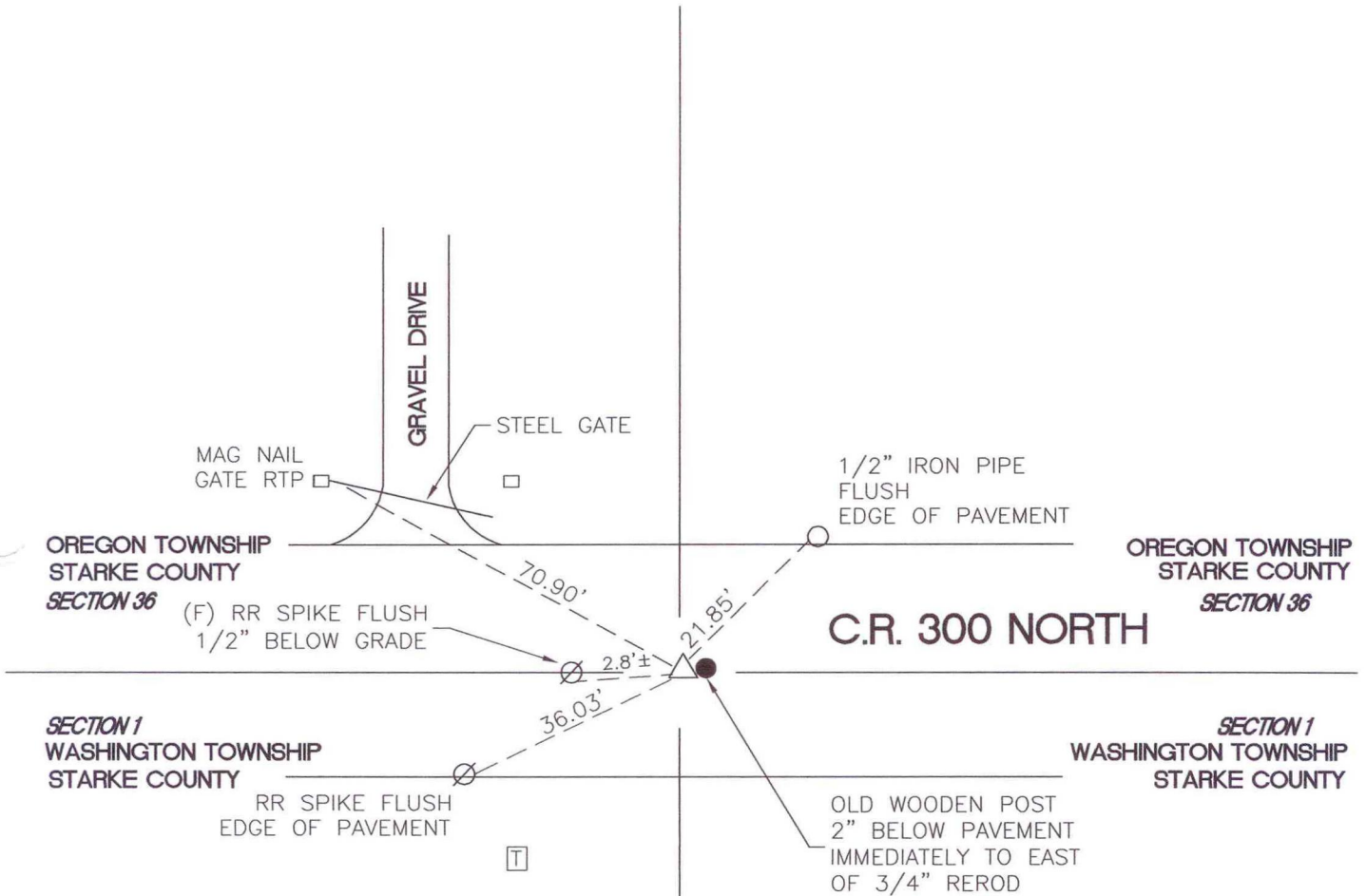


OREGON TOWNSHIP

T 34 N, R 1 W



MONUMENT: SEE COMMENTS

CORNER OF: RECORD USE

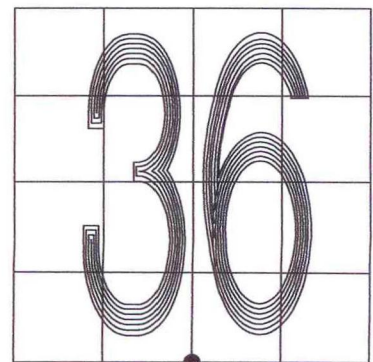
PARTY: VHJ/GR

DATE: 3-17-05

COMMENTS:
 (F) 3/4" REROD FLUSH BENT TO THE WEST. CUT OFF ROD 3" BELOW GRADE.

INDEX NUMBER

Z23



CORNER LOCATION IN THE SECTION