

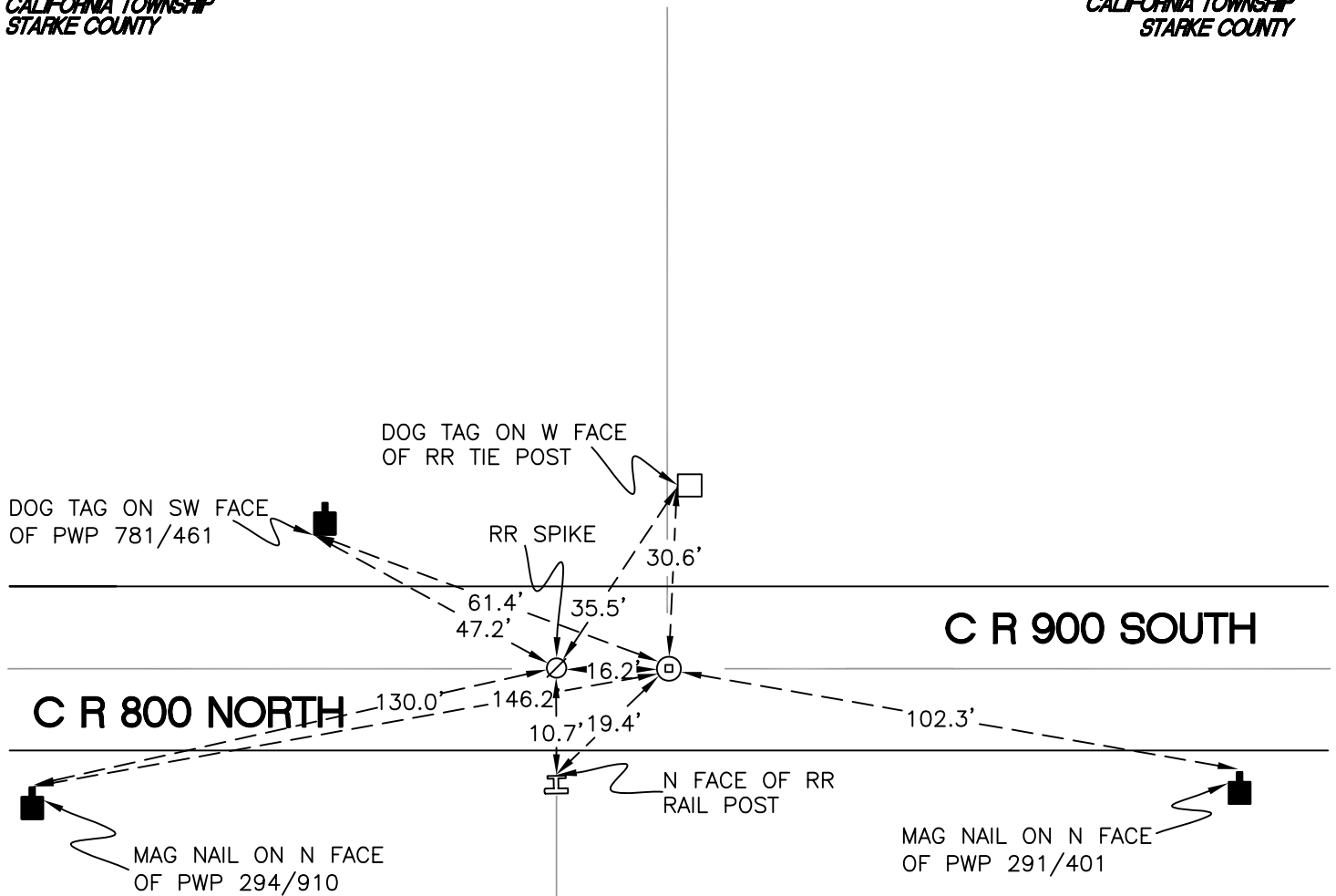
CALIFORNIA TOWNSHIP

T 32 N, R 2 W

Z23

*SECTION 36
CALIFORNIA TOWNSHIP
STARKE COUNTY*

*SECTION 36
CALIFORNIA TOWNSHIP
STARKE COUNTY*



*SECTION 1
FRANKLIN TOWNSHIP
PULASKI COUNTY*

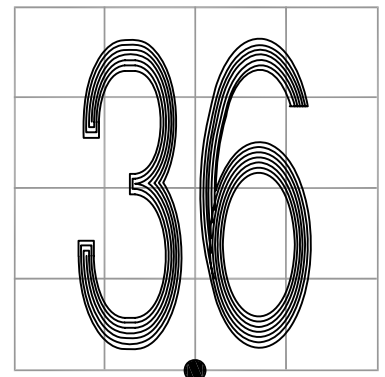
*SECTION 1
FRANKLIN TOWNSHIP
PULASKI COUNTY*

MONUMENT: RAILROAD CROSSING BOLT

PARTY: DPS/JL

DATE: 7/28/14

COMMENTS: SET BY TERRITORIAL ENGINEERING IN 2014.



CORNER LOCATION IN THE SECTION

Z23