

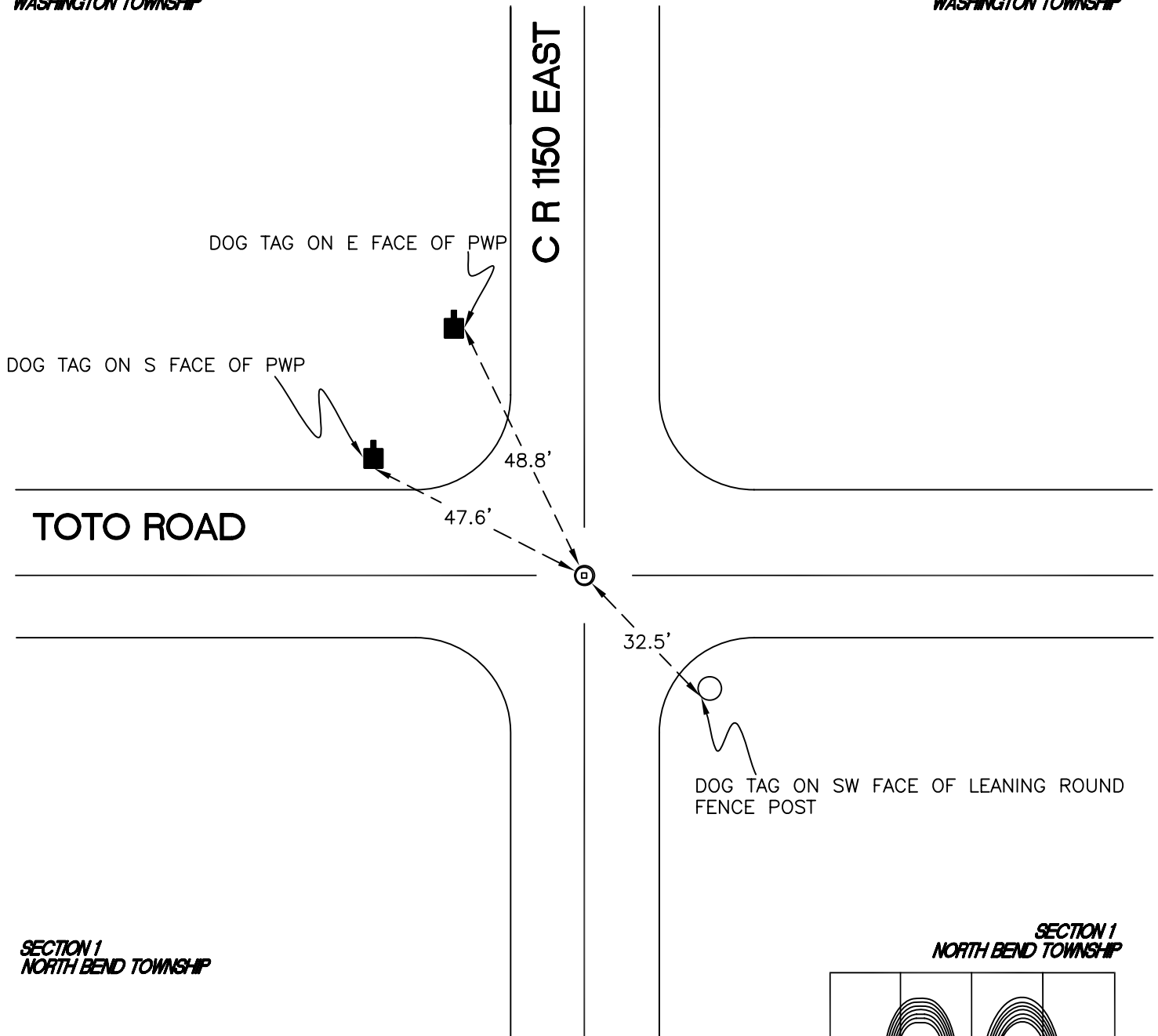
WASHINGTON TOWNSHIP

T 33 N, R 1 W

Z23

*SECTION 36
WASHINGTON TOWNSHIP*

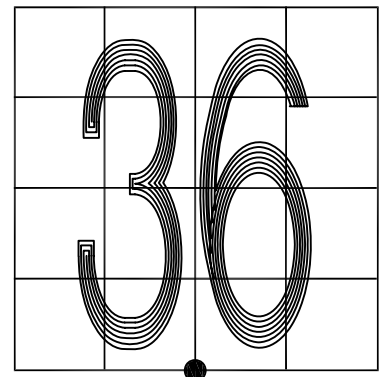
*SECTION 36
WASHINGTON TOWNSHIP*



*SECTION 1
NORTH BEND TOWNSHIP*

*SECTION 1
NORTH BEND TOWNSHIP*

MONUMENT: RR CROSSING BOLT INSIDE 2" IRON PIPE
CORNER OF: RECORD USE
PARTY: JL/PM
DATE: 7-9-2008
COMMENTS: 2' S OF CL OF TOTO ROAD



CORNER LOCATION IN THE SECTION

Z23