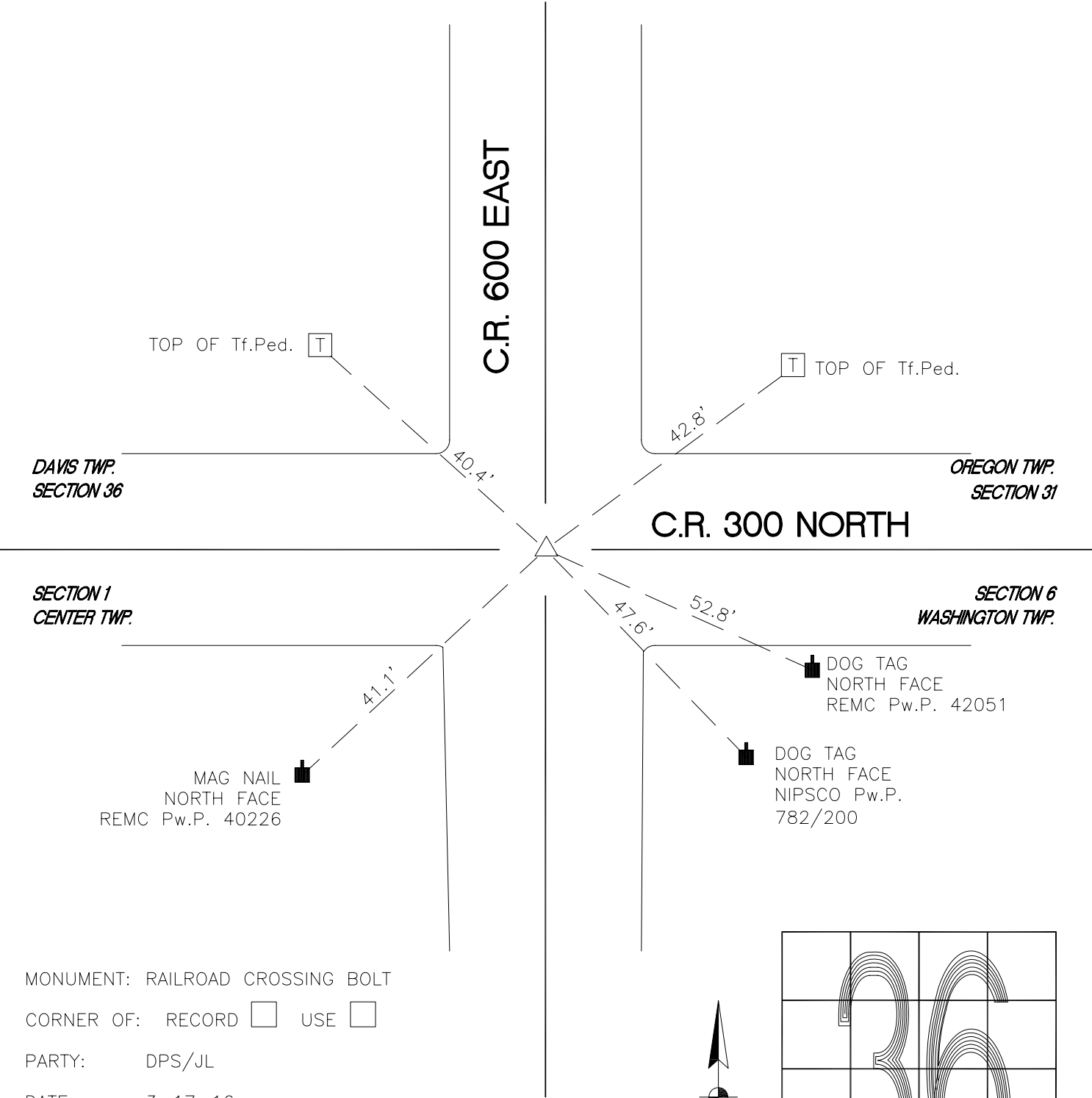


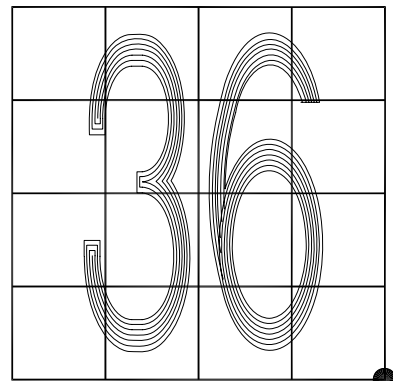
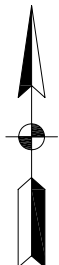
DAVIS TOWNSHIP

T 34 N, R 2 W

Z25



MONUMENT: RAILROAD CROSSING BOLT
 CORNER OF: RECORD USE
 PARTY: DPS/JL
 DATE: 3-17-16
 COMMENTS: FOUND BY HJC/VHJ/DPS IN 2001



Z25

CORNER LOCATION IN THE SECTION