

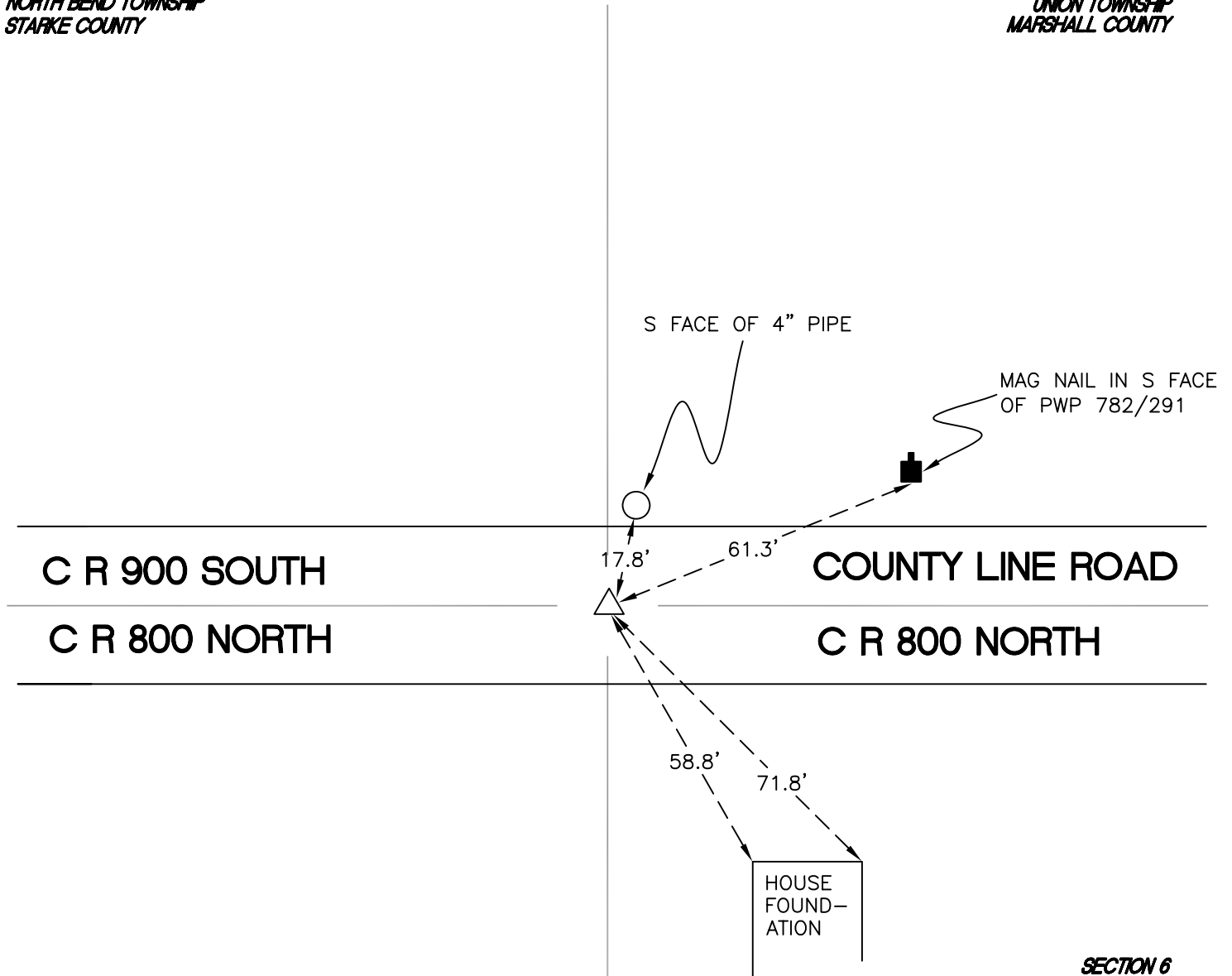
NORTH BEND TOWNSHIP

T 32 N, R 1 W

Z25

SECTION 36
NORTH BEND TOWNSHIP
STARKE COUNTY

SECTION 31
UNION TOWNSHIP
MARSHALL COUNTY



SECTION 1
TIPPECANOE TOWNSHIP
FULASKI COUNTY

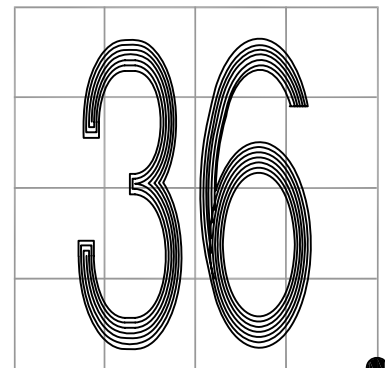
SECTION 6
AUBREENAUBEE TOWNSHIP
FULTON COUNTY

MONUMENT: ALUMINUM MONUMENT

PARTY: JL/AO

DATE: 6/18/12

COMMENTS: MARSHALL COUNTY REPLACED THE RR SPIKE
(SET IN 1989 OVER THE STONE) WITH AN
ALUMINUM MONUMENT IN 1990.



CORNER LOCATION IN THE SECTION

Z25