

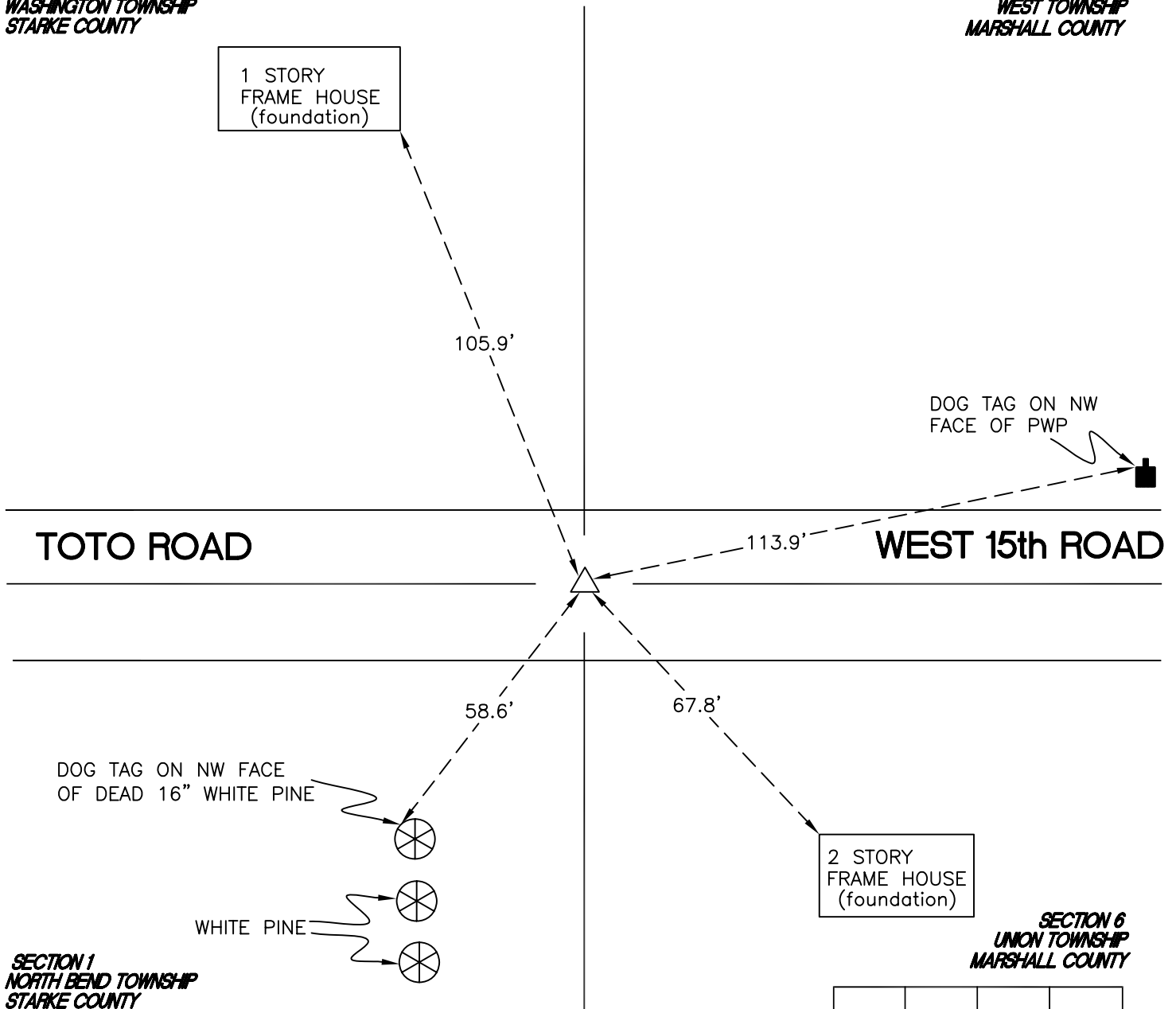
# WASHINGTON TOWNSHIP

T 33 N, R 1 W

## Z25

SECTION 36  
WASHINGTON TOWNSHIP  
STARKE COUNTY

SECTION 31  
WEST TOWNSHIP  
MARSHALL COUNTY



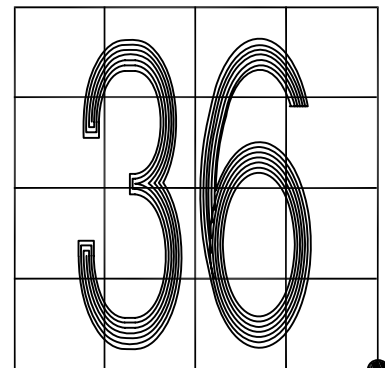
MONUMENT: ALUMINUM MONUMENT

CORNER OF: RECORD  USE

PARTY: JL/PM

DATE: 8-5-2008

COMMENTS: PRIOR TO 1987 MARSHALL AND STARKE COUNTIES USED THE SAME MONUMENT WHICH WAS LOCATED ABOUT 1' W OF ALUMINUM MONUMENT. IN 1987 MARSHALL COUNTY ESTABLISHED CURRENT MONUMENT OVER A FOUND STONE. STARKE COUNTY SURVEYS PRIOR TO 1987 USED THE OLDER MONUMENT.



CORNER LOCATION IN THE SECTION

## Z25