

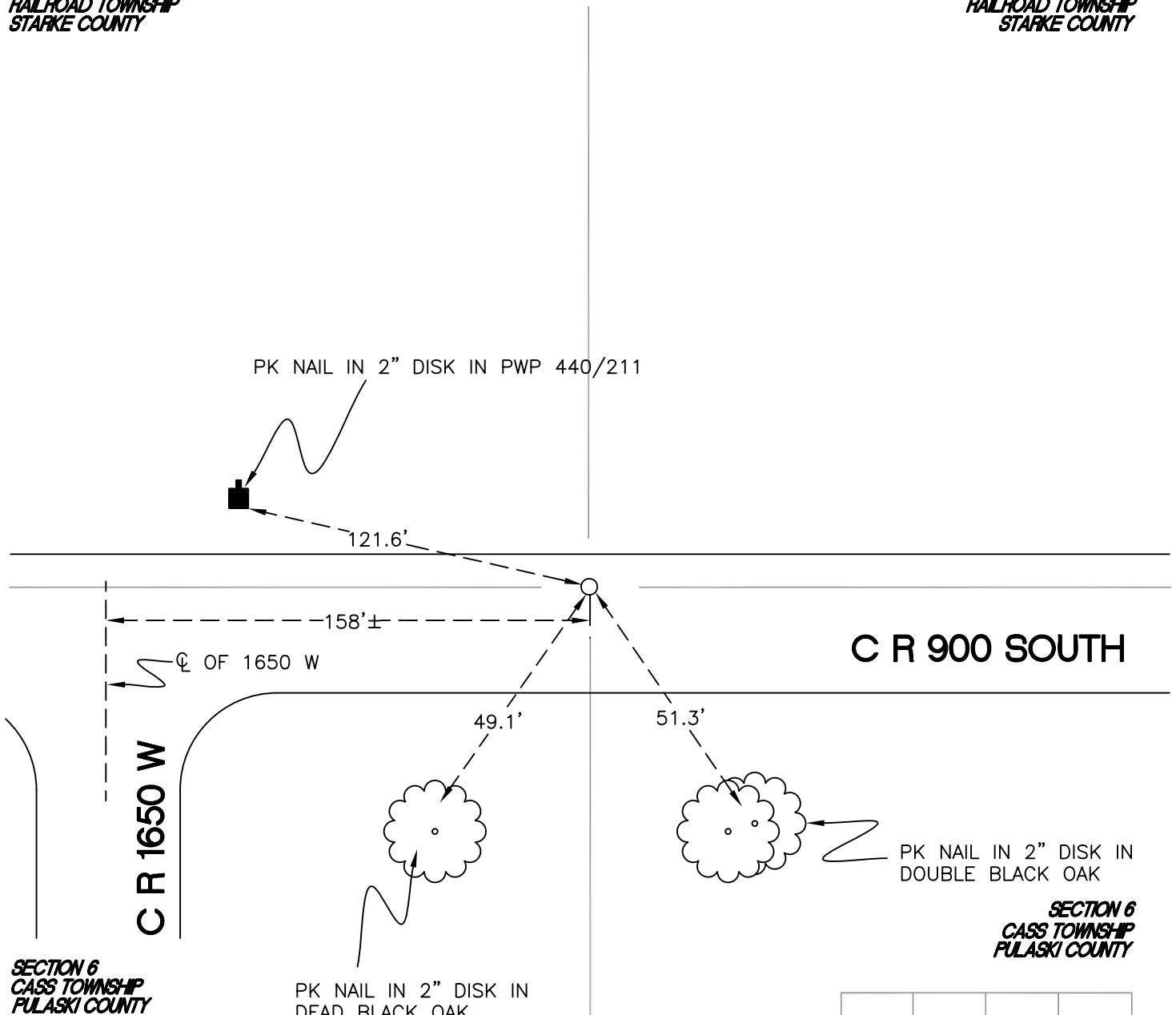
RAILROAD TOWNSHIP

T 32 N, R 4 W

Z3

SECTION 31
RAILROAD TOWNSHIP
STARKE COUNTY

SECTION 31
RAILROAD TOWNSHIP
STARKE COUNTY



SECTION 6
CASS TOWNSHIP
PULASKI COUNTY

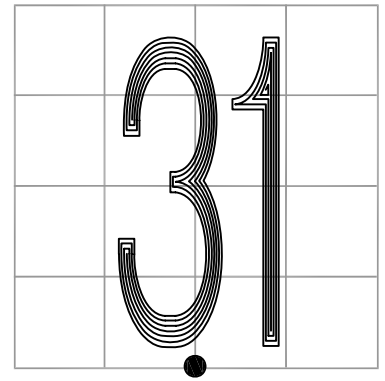
SECTION 6
CASS TOWNSHIP
PULASKI COUNTY

MONUMENT: 1" IRON PIPE

PARTY: DPS/JL

DATE: 5/8/2015

COMMENTS: SET BY DWC/SJF IN 1990. MONUMENT IS 1.5' S OF N EDGE OF PAVEMENT OF 900S AND 2" BELOW GRADE.



CORNER LOCATION IN THE SECTION

Z3