

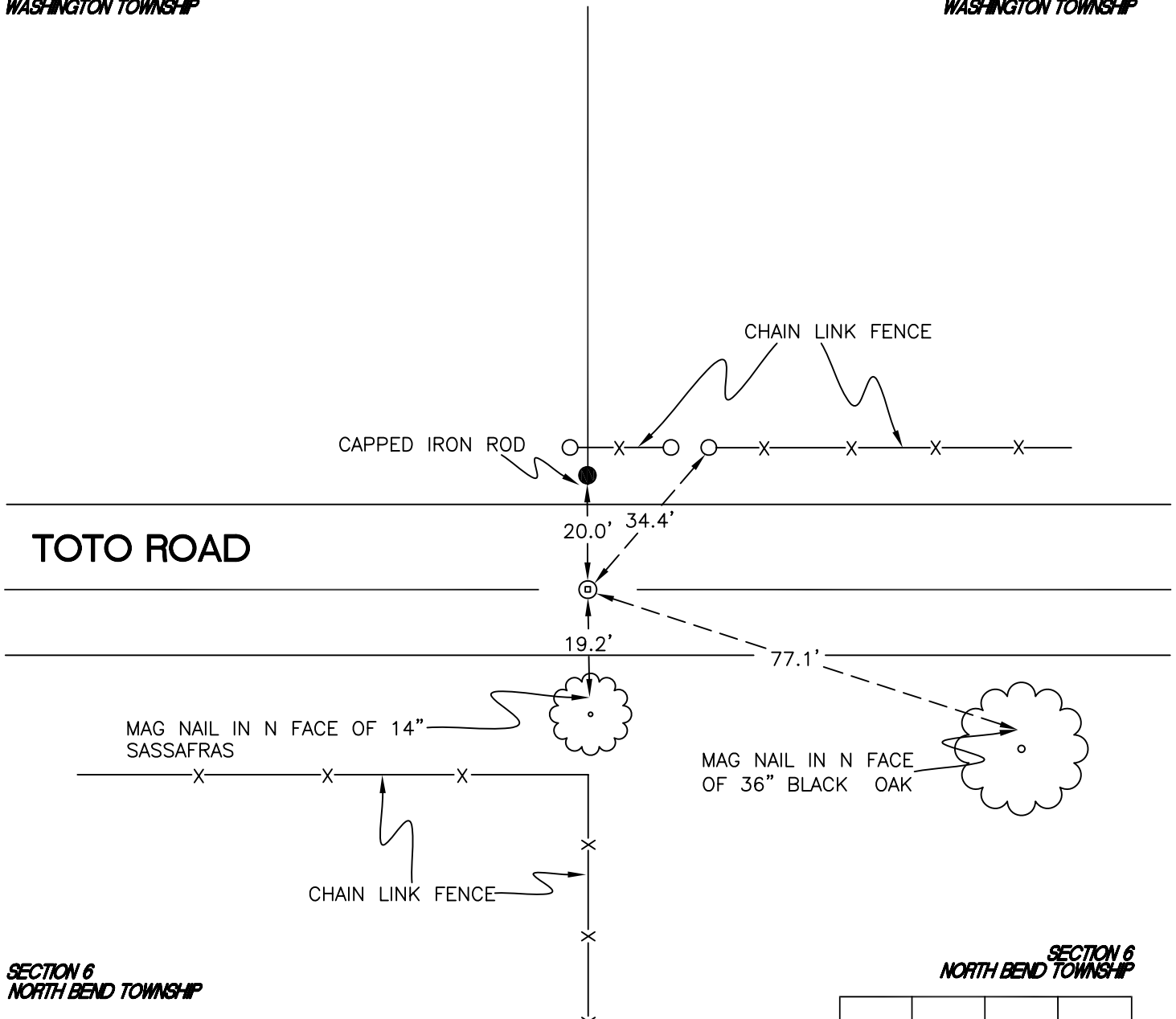
WASHINGTON TOWNSHIP

T 33 N, R 1 W

Z3

SECTION 31
WASHINGTON TOWNSHIP

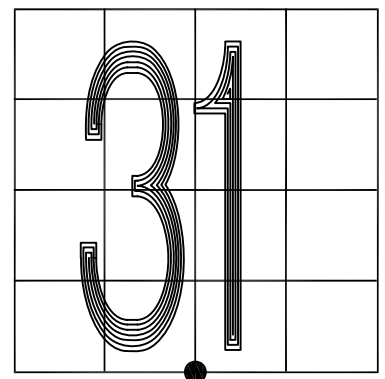
SECTION 31
WASHINGTON TOWNSHIP



MONUMENT: RR CROSSING BOLT REPLACES RR SPIKE
CORNER OF: RECORD USE
PARTY: JL/PM
DATE: 7-8-2008
COMMENTS: 6" S OF C OF TOTO ROAD

SECTION 6
NORTH BEND TOWNSHIP

SECTION 6
NORTH BEND TOWNSHIP



CORNER LOCATION IN THE SECTION

Z3