

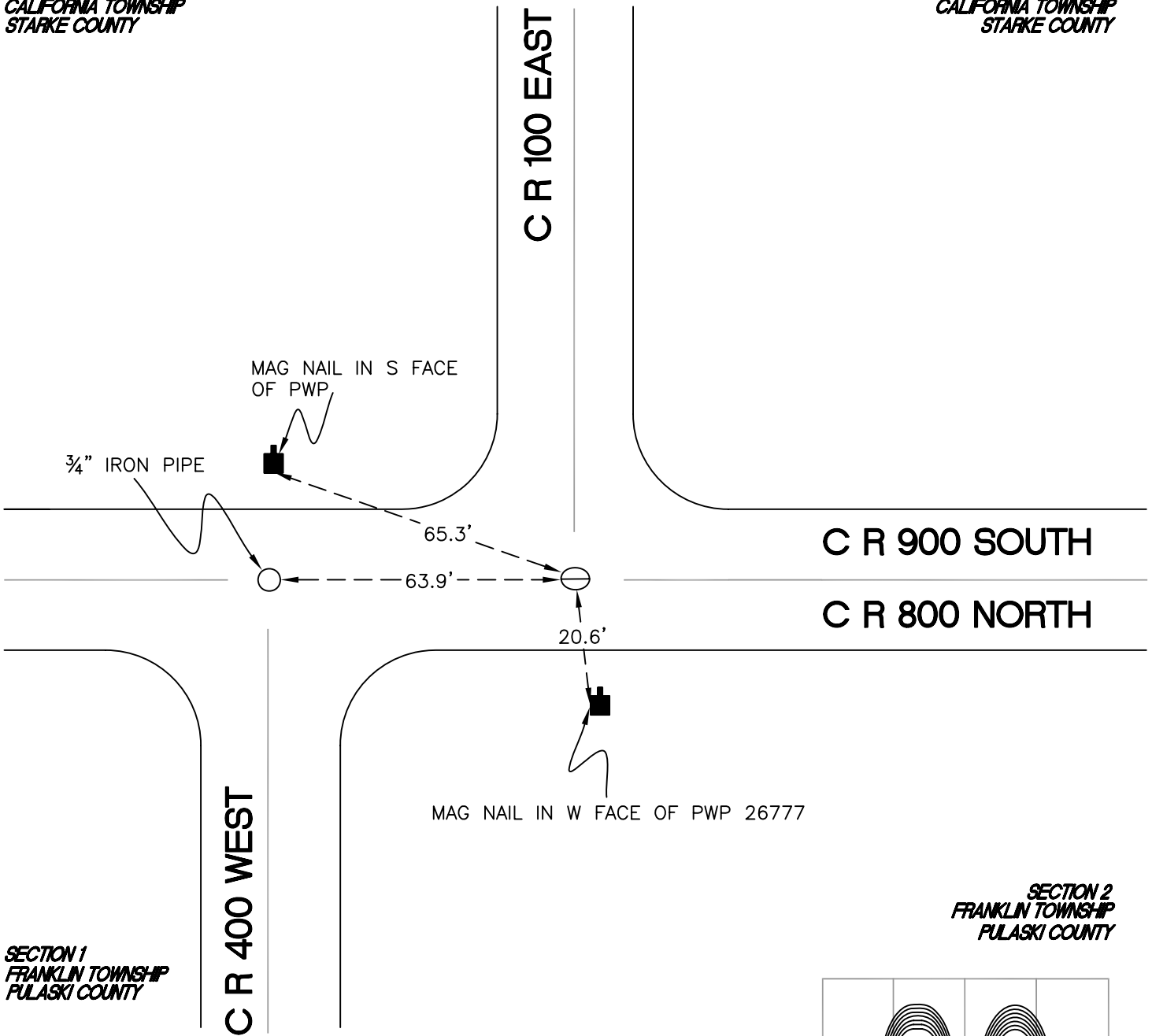
CALIFORNIA TOWNSHIP

T 32 N, R 2 W

Z5

SECTION 31
CALIFORNIA TOWNSHIP
STARKE COUNTY

SECTION 32
CALIFORNIA TOWNSHIP
STARKE COUNTY



SECTION 1
FRANKLIN TOWNSHIP
PULASKI COUNTY

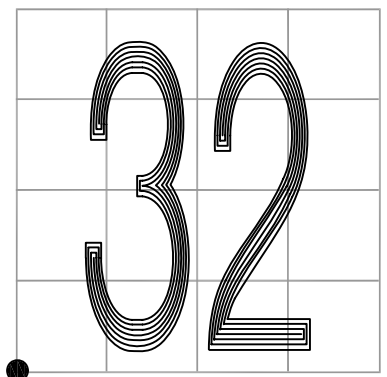
SECTION 2
FRANKLIN TOWNSHIP
PULASKI COUNTY

MONUMENT: 3/4" PINCH PIPE

PARTY: DPS/JL

DATE: 7/15/14

COMMENTS: MONUMENT IS 2' E OF ϕ OF 100.
FOUND BY JBS IN 1984.



CORNER LOCATION IN THE SECTION

Z5