

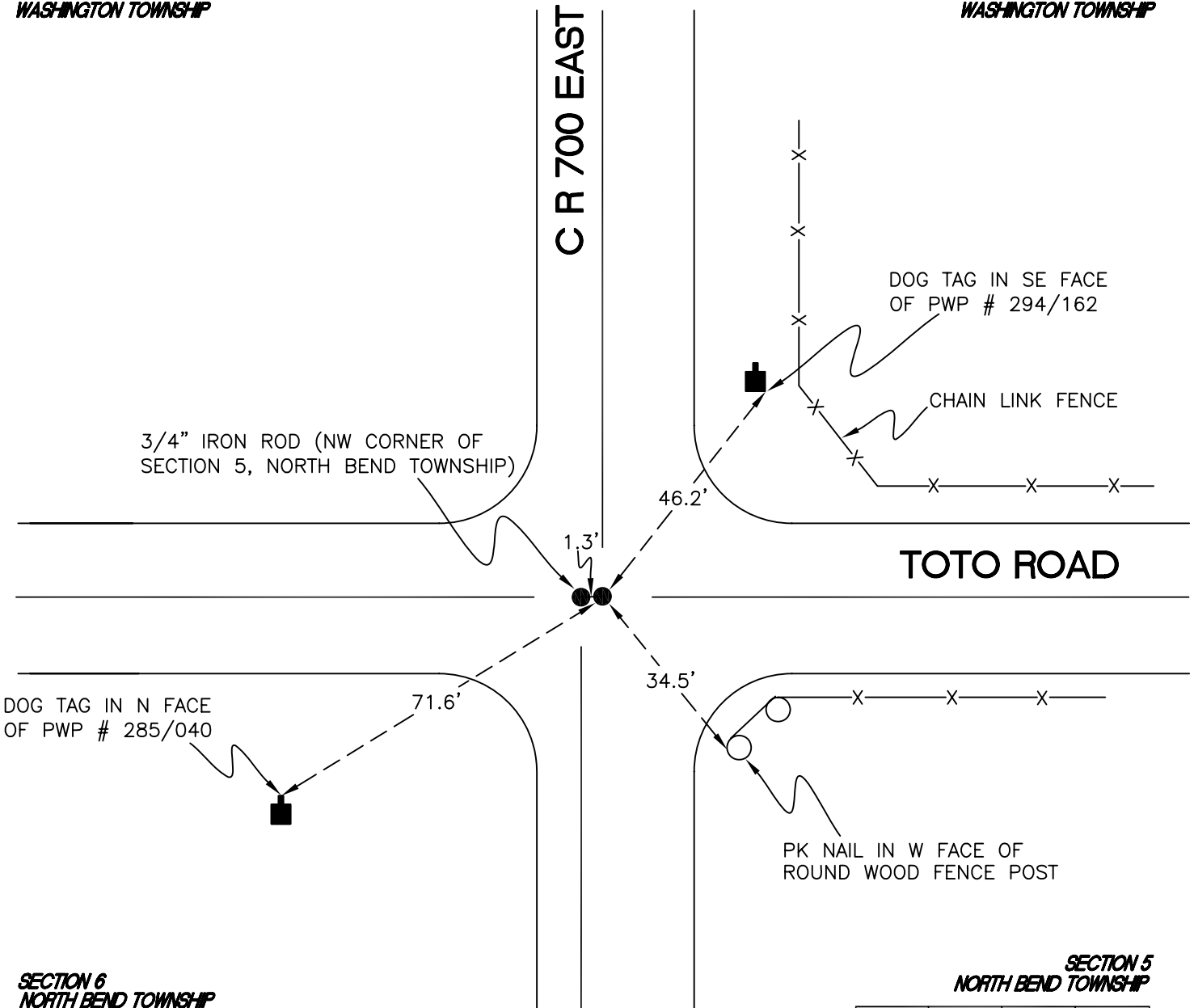
WASHINGTON TOWNSHIP

T 33 N, R 1 W

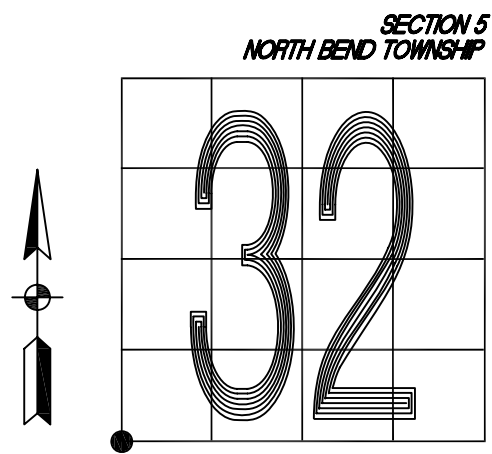
Z5

SECTION 31
WASHINGTON TOWNSHIP

SECTION 32
WASHINGTON TOWNSHIP



MONUMENT: 3/4" IRON ROD
CORNER OF: RECORD USE
PARTY: JL/PM
DATE: 7-8-2008
COMMENTS: 1' W OF ϕ OF 700E



CORNER LOCATION IN THE SECTION

Z5