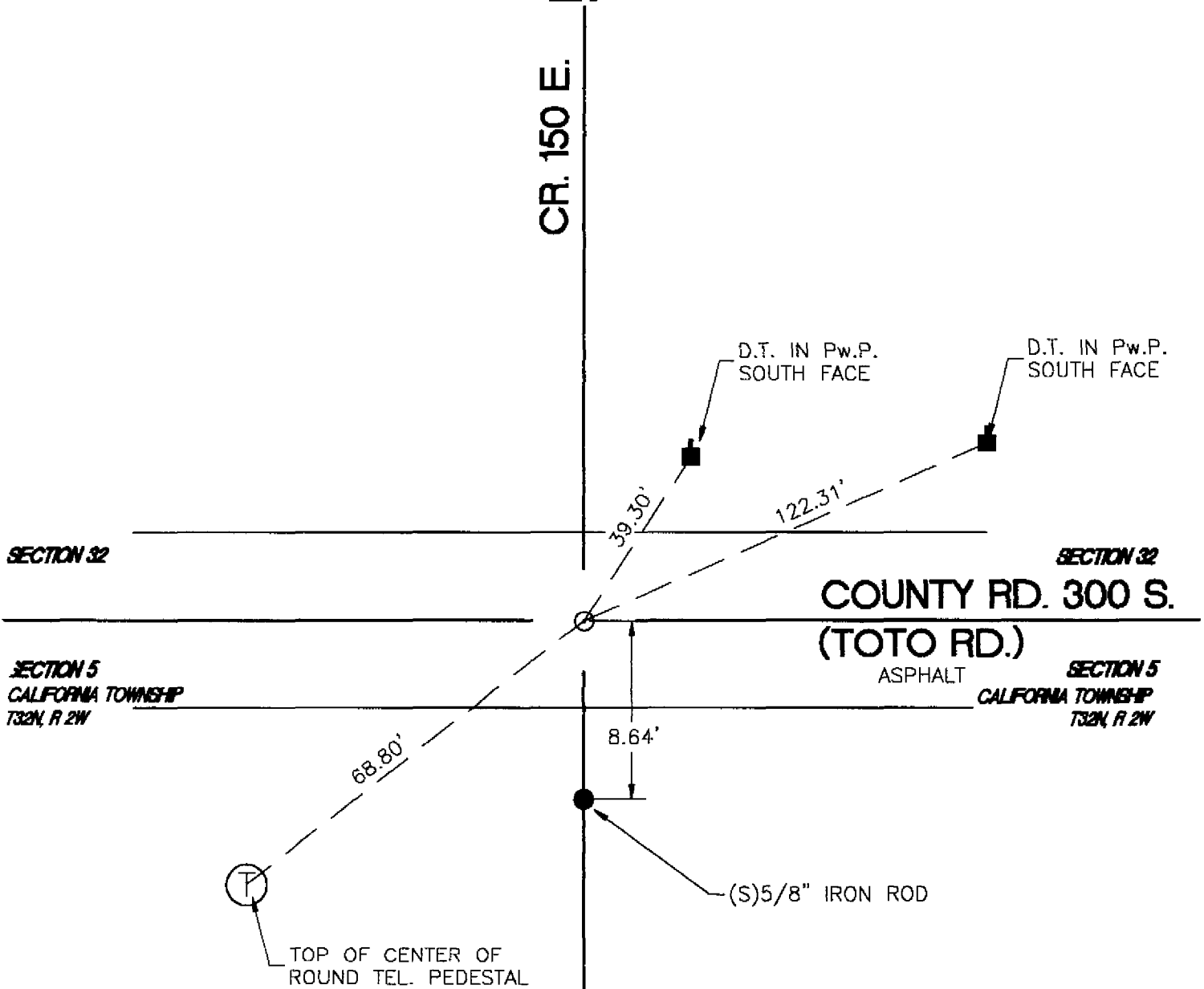


CENTER TOWNSHIP

T 33 N, R 2 W

Z7

CR. 150 E.



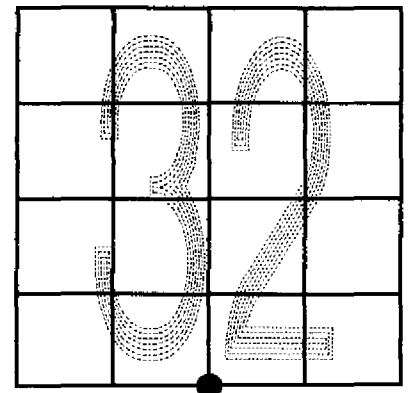
MONUMENT: CROSSING BOLT

CORNER OF: RECORD USE

PARTY: DWC \ DPS

DATE: 10-12-2000

COMMENTS: 3.5' SOUTH OF ROAD CENTERLINE



CORNER LOCATION IN THE SECTION