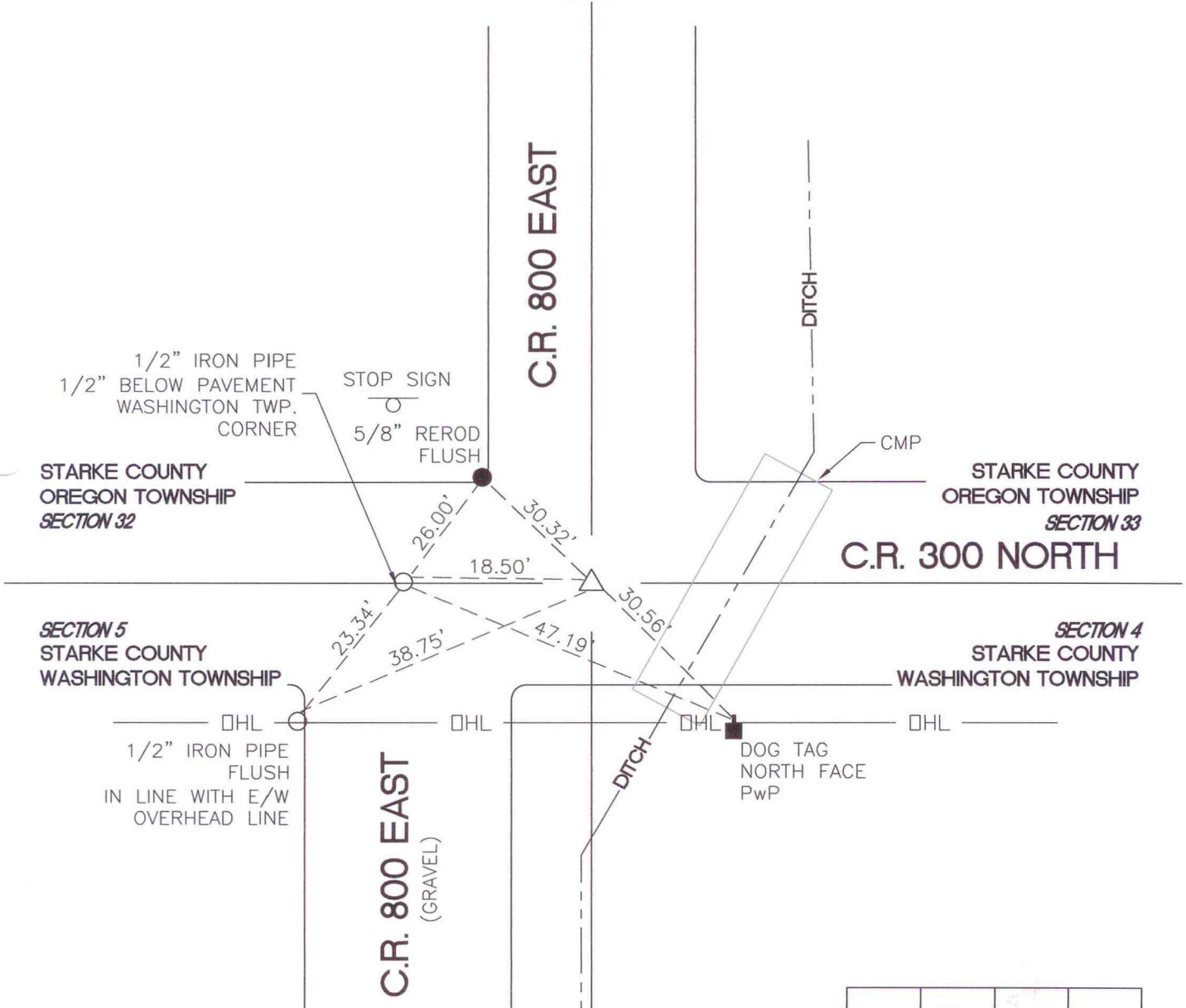


OREGON TOWNSHIP

T 34 N, R 1 W

Z9



MONUMENT: (F) RR SPIKE 1" BELOW PAVEMENT

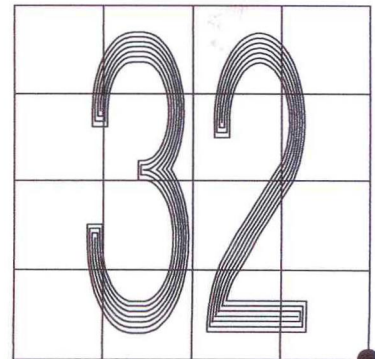
CORNER OF: RECORD USE

PARTY: VHJ/GR

DATE: 3-16-05

COMMENTS:

HISTORY: RLP, OF THE STARKE COUNTY SURVEYOR'S OFFICE, SET RR SPIKE ON JULY 7, 1983.



CORNER LOCATION IN THE SECTION