

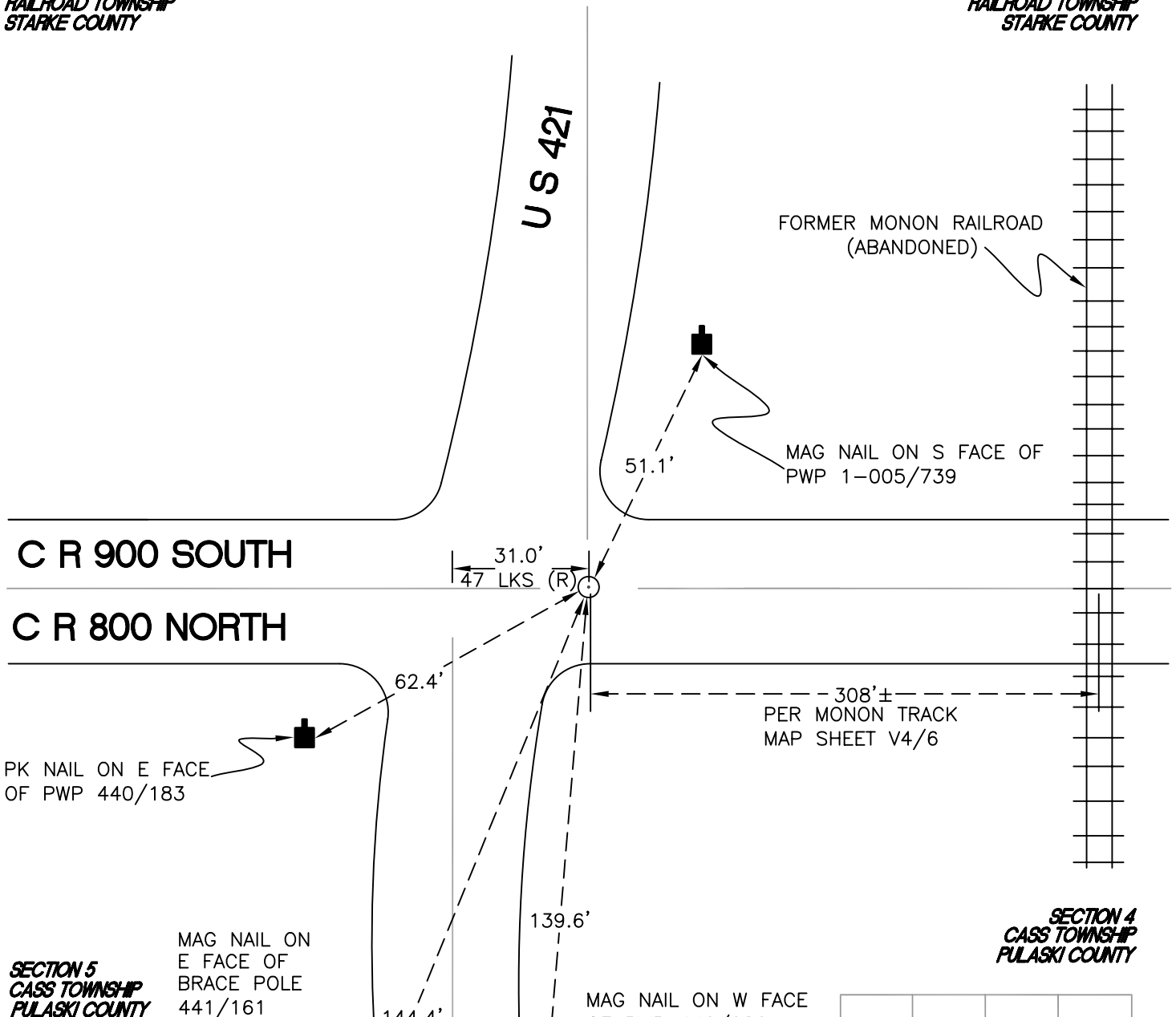
# RAILROAD TOWNSHIP

T 32 N, R 4 W

## Z9

SECTION 32  
RAILROAD TOWNSHIP  
STARKE COUNTY

SECTION 33  
RAILROAD TOWNSHIP  
STARKE COUNTY



SECTION 5  
CASS TOWNSHIP  
PULASKI COUNTY

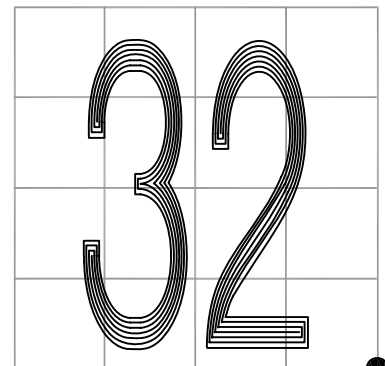
SECTION 4  
CASS TOWNSHIP  
PULASKI COUNTY

MONUMENT: RAIL BOLT

PARTY: DPS/JL

DATE: 5/7/2015

COMMENTS: MONUMENT IS  $12'$  E OF  $\odot$  OF US 421 AND IS  $6''$  BELOW GRADE. FOUND BY VHJ IN 1986.



CORNER LOCATION IN THE SECTION

## Z9